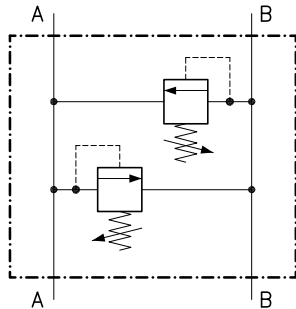
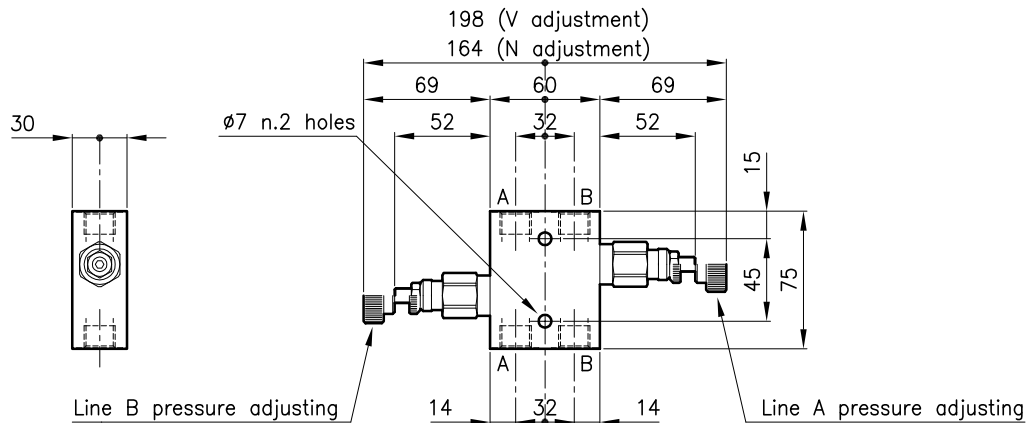


Technical features



Valves	(For features see catalogue 02.040)	LPE 20
Max. flow	(l/min.)	30
Max. pressure	(bar)	210
Fluid viscosity range	(cSt)	2.8 - 380
Fluid temperature range	(°C)	-20 +80
Mass	(kg)	0.750
Cracking pressure 90% of setting value		
Reseat pressure 80% of setting value		
Cracking pressure defined with 1 l/min.		
Standard setting obtained with 5 l/min.		
Hydraulic fluid; mineral oil HM and HV		ISO 6074
Recommended filtration; 19/15 ISO 4466 (25 μ absolutes)		
Standard seals in Polyurethane and Buna N		

Dimensions



Ordering informations

LPE 20/D-N-CSL 03-B05

Valves type

Standard springs

Type Setting range

U = 10 - 90 bar

D = 35 - 140 bar

T = 70 - 210 bar

Adjustment type

N = Standard adjustment

V = Handknob adjustment

Version

Standard ports

B05 = G 1/4 ISO 228

B06 = G 3/8 ISO 228

Codes:

LPE 20/U-N-CSL 03-B05 21 011 228

LPE 20/D-N-CSL 03-B05 21 011 229

LPE 20/T-N-CSL 03-B05 21 011 230

LPE 20/U-V-CSL 03-B05 21 011 231

LPE 20/D-V-CSL 03-B05 21 011 232

LPE 20/T-V-CSL 03-B05 21 011 233

LPE 20/U-N-CSL 03-B06 21 011 234

LPE 20/D-N-CSL 03-B06 21 011 235

LPE 20/T-N-CSL 03-B06 21 011 236

LPE 20/U-V-CSL 03-B06 21 011 237

LPE 20/D-V-CSL 03-B06 21 011 238

LPE 20/T-V-CSL 03-B06 21 011 239

Only body codes:

Body type 20-CSL 03-B05 28 144 107

Body type 20-CSL 03-B06 28 144 108