

▼
Creative Passion

Koino[®]

www.koino.com

CAM SWITCHES



Quick Selection Guide

1. By Ratings

Ratings	Model
125VAC 10A 250VAC 7.5A	KH-301
125VAC 20A 250VAC 10A	KH-302, KCR-303
125VAC 15A 250VAC 10A	KSC-22

2. Need Flame Resisting Model?

KCR-303 and KSC-22 use UL94-V0 grade material

3. Need Easy Install?

KSC-22 is very easily installed.

KSC-22 Contact Block is easily released with one touch

KH-301

Quick Selection Guide

1. Standard Products

Ammeter change-over Switch	3Φ3W	2CT	KH-301A-2
		3CT	KH-301A-33
	3Φ4W	3CT	KH-301A-3
Voltmeter Change-over Switch	3Φ3W	2PT	KH-301V-2
		3PT	KH-301V-33
	3Φ4W	3PT	KH-301V-3
Control Switch	Auto-release		KH-301C-1
	LOCK, Auto-release		KH-301CL-1

2. Order-made Products

KH-301- (R)

① ②

① Refer to the Appendix. **'OPTIONAL CIRCUITS'**

② none: Manual Return | R: Auto Return by spring

※ Please specify handle type (R, H, P and F type available). See pictures below.

R type



H type



P type



F type



CONTROL
COMPONENTS

SQUARE
LIGHT

TOWER
LIGHT

MICRO
SWITCH

FOOT
SWITCH

LIMIT
SWITCH

POWER
SWITCH

HOIST
SWITCH

CAM
SWITCH

BUZZER

PHOTO
SENSOR

PROXIMITY
SENSOR

FLOATING
LEVEL SWITCH

TIMER &
COUNTER

RELAY

SOCKETS

TERMINAL
BLOCK

CONTROL
BOX

PID TEMP.
CONTROLLER

Contact ratings

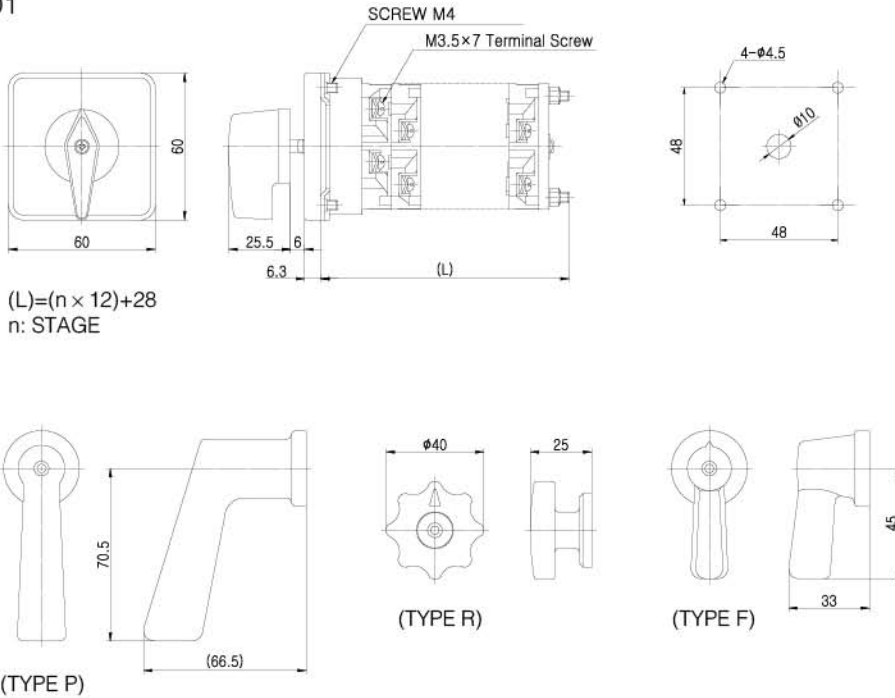
AC					DC				
Voltage	Resistive Load		Inductive Load		Voltage	Resistive Load		Inductive Load	
	Current	Capacity	Current	Capacity		Current	Capacity	Current	Capacity
125VAC	10A	1250VA	6A	750VA	24VDC	10A	240W	7A	168W
250VAC	7.5A	1875VA	3.5A	875VA	110VDC	2A	220W	1.3A	143W
440VAC	2.5A	1100VA	0.8A	352VA	250VDC	1A	250W	0.45A	112W

Specification

Insulation Resistance	min. 100MΩ (DC500V)
Dielectric Strength	1,500VAC (50/60Hz) for 1 minute
Contact Resistance	Max. 50mΩ
Vibration Resistance	10~55Hz 1.5mm double amplitude at X,Y,Z axis for 1 hour
Impact Resistance	30G
Operation Frequency	20 operations/minute
Durability	Electrical: 200,000 operations Mechanical: 500,000 operations
Protection	IP40
Ambient Temperature	-25~+50°C (not freezing condition)
Ambient Humidity	45~85% RH
Material	Contact block: Phenol Front Panel: ABS Printing Panel: Aluminum

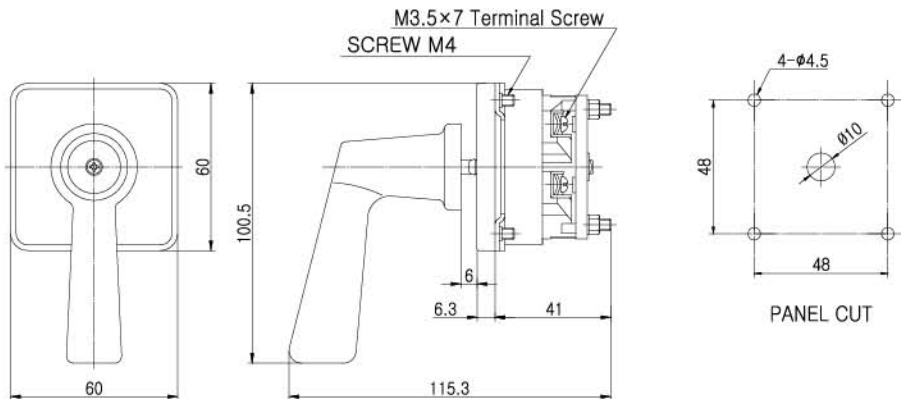
Dimensions

KH-301



$(L) = (n \times 12) + 28$
 n: STAGE

KH-301C-1, KH-301CL-1



CONTROL COMPONENTS

SQUARE LIGHT

TOWER LIGHT

MICRO SWITCH

FOOT SWITCH

LIMIT SWITCH

POWER SWITCH

HORN SWITCH

CAM SWITCH

BUZZER

PHOTO SENSOR

PROXIMITY SENSOR

FLOAT/LEVEL SWITCH

TIMER & COUNTER

RELAY

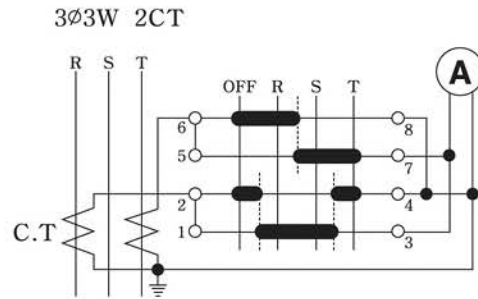
SOCKETS

TERMINAL BLOCK

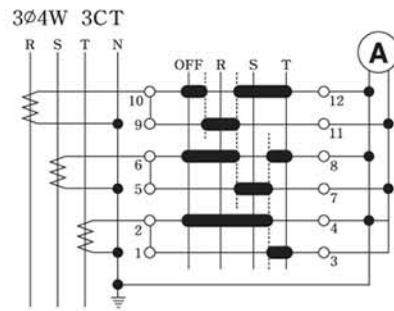
CONTROL BOX

PID TEMP. CONTROLLER

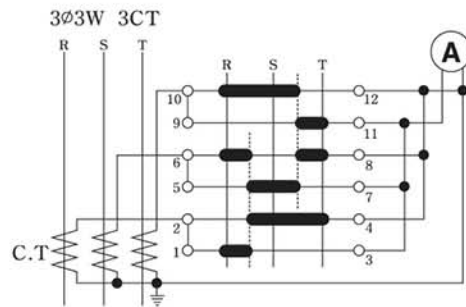
KH-301A-2



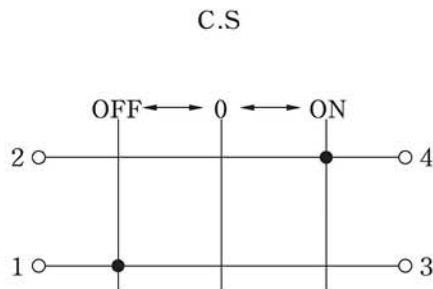
KH-301A-3



KH-301A-33



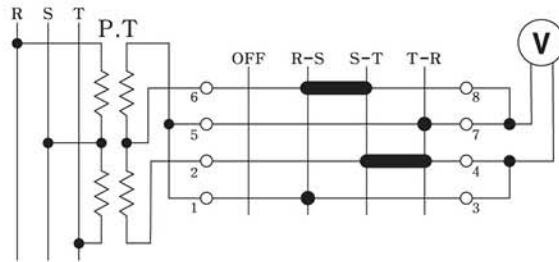
KH-301C-1



KH-301V-2



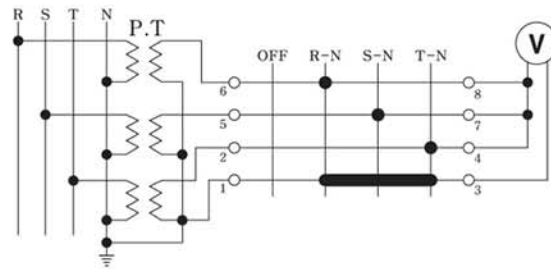
3Ø3W 2PT



KH-301V-3



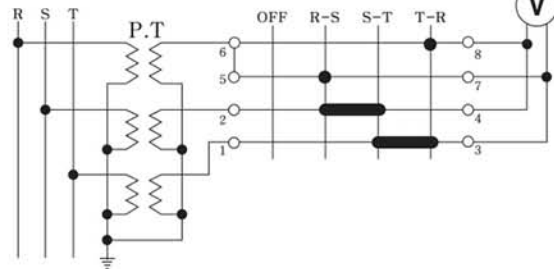
3Ø4W 3PT



KH-301V-33



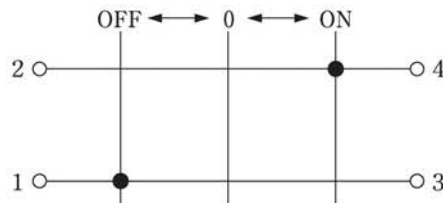
3Ø3W 3PT



KH-301CL-1



C.S



CONTROL COMPONENTS

SQUARE LIGHT

TOWER LIGHT

MICRO SWITCH

FOOT SWITCH

LIMIT SWITCH

POWER SWITCH

HOIST SWITCH

CAM SWITCH

BUZZER

PHOTO SENSOR

PROXIMITY SENSOR

FLOAT/LEVEL SWITCH

TIMER & COUNTER

RELAY

SOCKETS

TERMINAL BLOCK

CONTROL BOX

PID TEMP. CONTROLLER

KH-302

Quick Selection Guide

1. Standard Products

Ammeter change-over Switch	3Φ3W	2CT	KH-302A-2
		3CT	KH-302A-33
	3Φ4W	3CT	KH-302A-3
Voltmeter Change-over Switch	3Φ3W	2PT	KH-302V-2
		3PT	KH-302V-33
	3Φ4W	3PT	KH-302V-3
Control Switch	Auto-release		KH-302C-1
	LOCK, Auto-release		KH-302CL-1

2. Order-made Products

KH-302- - **(R)**

① ② ③

① none: standard type | R: fix with ring | K: operate with Key | KL: Key Locker type

② Refer to the Appendix. **'OPTIONAL CIRCUITS'**

③ none: Manual Return | R: Auto Return by spring

※ Please specify handle type (R, H, P and F type available).

KH-302R



KH-302K



KH-302KL



Contact ratings

AC					DC				
Voltage	Resistive Load		Inductive Load		Voltage	Resistive Load		Inductive Load	
	Current	Capacity	Current	Capacity		Current	Capacity	Current	Capacity
125VAC	20A	2500VA	10A	1250VA	24VDC	20A	480W	15A	360W
250VAC	10A	2500VA	6A	1500VA	110VDC	5A	550W	3A	330W
440VAC	2.5A	1100VA	2A	880VA	250VDC	1A	250W	0.5A	125W

Specification

Insulation Resistance	min. 100MΩ (DC500V)
Dielectric Strength	1,500VAC (50/60Hz) for 1 minute
Contact Resistance	Max. 50mΩ
Vibration Resistance	10~55Hz 1.5mm double amplitude at X,Y,Z axis for 1 hour
Impact Resistance	30G
Operation Frequency	20 operations/minute
Durability	Electrical: 200,000 operations Mechanical: 500,000 operations
Protection	IP40
Ambient Temperature	-25~+50°C (not freezing condition)
Ambient Humidity	45~85% RH
Material	Contact block: PC Front Panel: ABS Printing Panel: Aluminum

CONTROL COMPONENTS

SQUARE LIGHT

TOWER LIGHT

MICRO SWITCH

FOOT SWITCH

LIMIT SWITCH

POWER SWITCH

HORN SWITCH

CAM SWITCH

BUZZER

PHOTO SENSOR

PROXIMITY SENSOR

FLOATING LEVEL SWITCH

TIMER & COUNTER

RELAY

SOCKETS

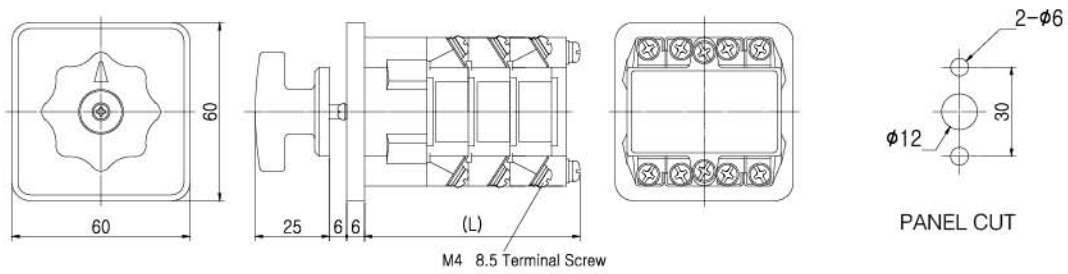
TERMINAL BLOCK

CONTROL BOX

PID TEMP. CONTROLLER

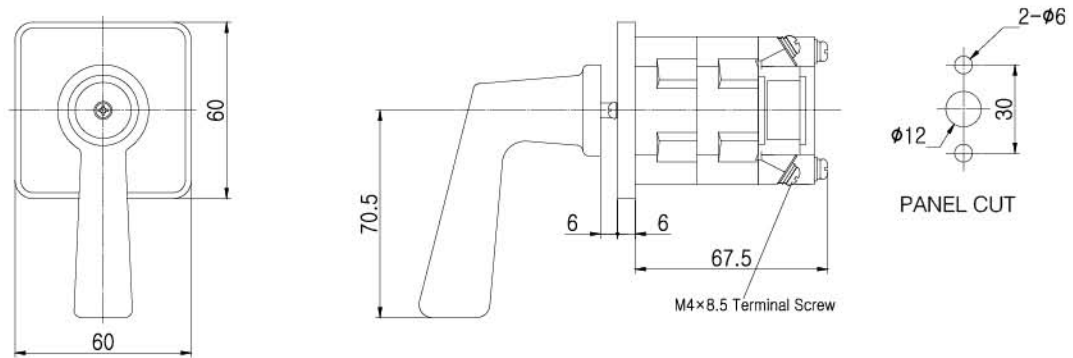
Dimensions

KH-302



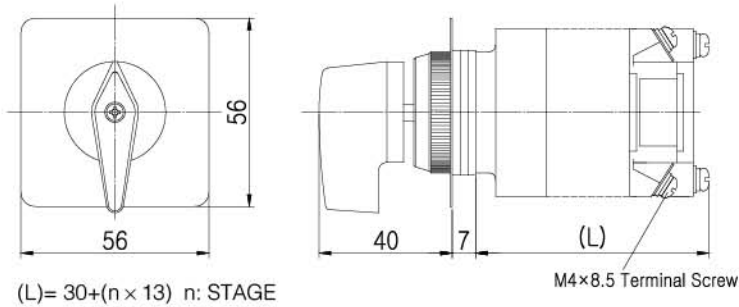
(L) = 30 + (n × 13) n: STAGE

KH-302C-1, KH-302CL-1



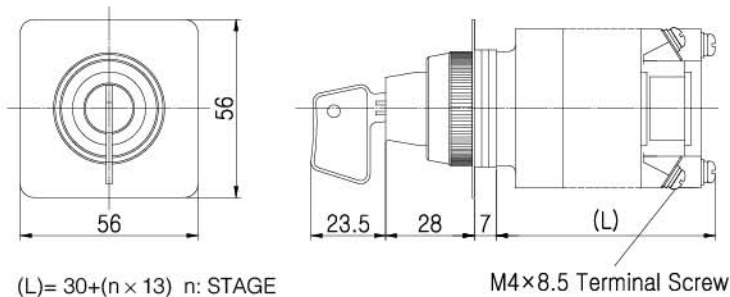
Dimensions

KH-302R



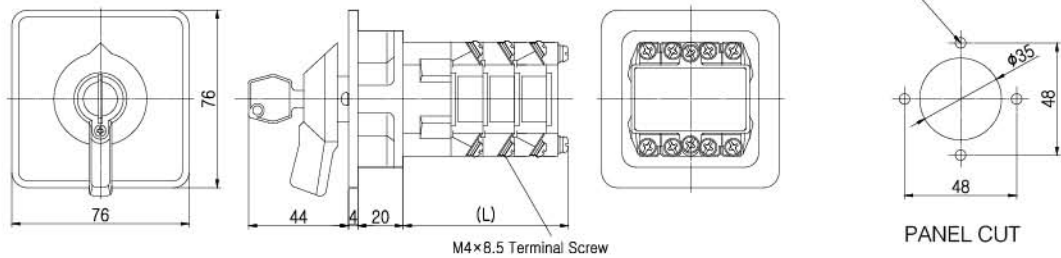
(L)= 30+(n × 13) n: STAGE

KH-302K



(L)= 30+(n × 13) n: STAGE

KH-302KL



(L)= 30+(n × 13) n: STAGE

CONTROL COMPONENTS

SQUARE LIGHT

TOWER LIGHT

MICRO SWITCH

FOOT SWITCH

LIMIT SWITCH

POWER SWITCH

HORN SWITCH

CAM SWITCH

BUZZER

PHOTO SENSOR

PROXIMITY SENSOR

FLOAT/LENS LEVEL SWITCH

TIMER & COUNTER

RELAY

SOCKETS

TERMINAL BLOCK

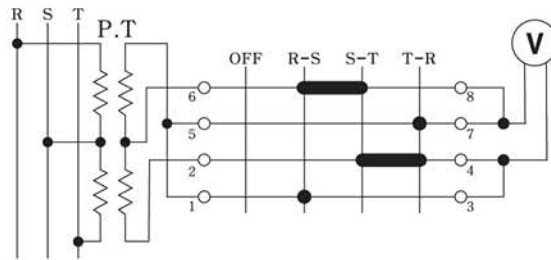
CONTROL BOX

HI TEMP. CONTROLLER

KH-302V-2



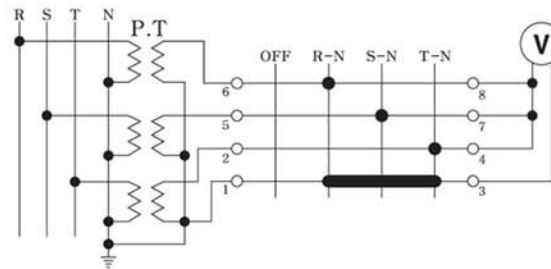
3Ø3W 2PT



KH-302V-3



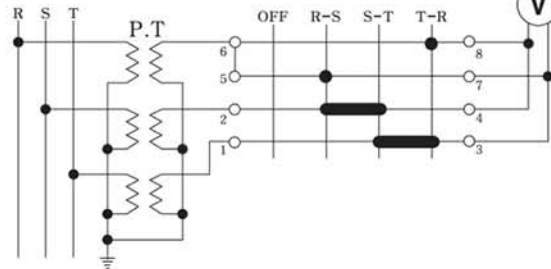
3Ø4W 3PT



KH-302V-33



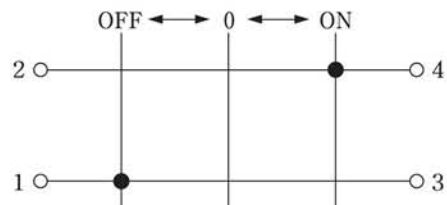
3Ø3W 3PT



KH-302CL-1



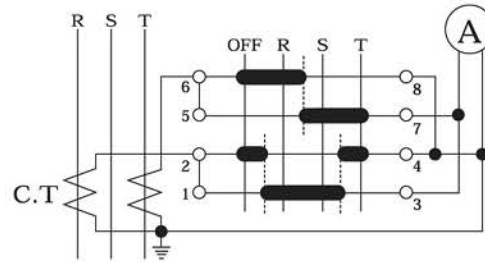
C.S



KH-302A-2



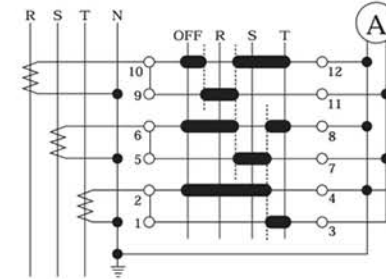
3 ϕ 3W 2CT



KH-302A-3



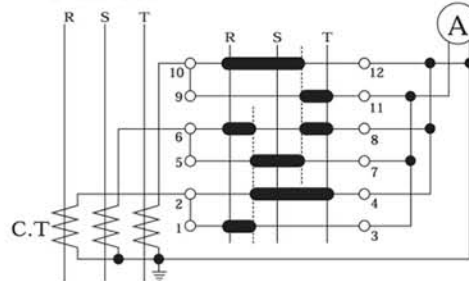
3 ϕ 4W 3CT



KH-302A-33



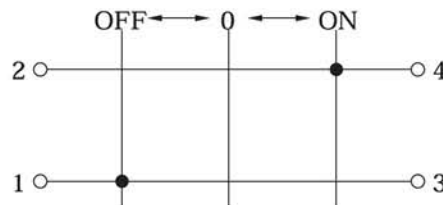
3 ϕ 3W 3CT



KH-302C-1



C.S



CONTROL COMPONENTS

SQUARE LIGHT

TOWER LIGHT

MICRO SWITCH

FOOT SWITCH

LIMIT SWITCH

POWER SWITCH

HOIST SWITCH

CAM SWITCH

BUZZER

PHOTO SENSOR

PROXIMITY SENSOR

FLOAT/LEVEL SWITCH

TIMER & COUNTER

RELAY

SOCKETS

TERMINAL BLOCK

CONTROL BOX

PID TEMP. CONTROLLER

KCR-303

Quick Selection Guide

1. Standard Products

Ammeter change-over Switch	3Φ3W	2CT	KCR-303A-2
		3CT	KCR-303A-33
Voltmeter Change-over Switch	3Φ3W	2PT	KCR-303V-2
		3PT	KCR-303V-33
	3Φ4W	3PT	KCR-303V-3

2. Order-made Products

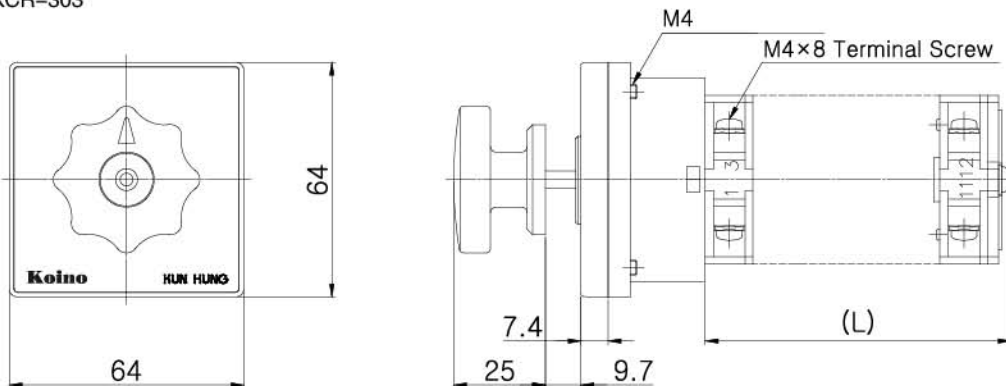
KCR-303- -

① ② ③

- ① Refer to the Appendix. **'OPTIONAL CIRCUITS'**
- ② handle type (R, H, P and F type available).
- ③ none: Manual operation | PL: Pull to LOCK

Dimensions

KCR-303



Contact ratings

AC					DC				
Voltage	Resistive Load		Inductive Load		Voltage	Resistive Load		Inductive Load	
	Current	Capacity	Current	Capacity		Current	Capacity	Current	Capacity
125VAC	20A	2500VA	10A	1250VA	24VDC	20A	480W	15A	360W
250VAC	10A	2500VA	6A	1500VA	110VDC	5A	550W	3A	330W
440VAC	2.5A	1100VA	2A	880VA	250VDC	1A	250W	0.5A	125W

Specification

Insulation Resistance	min. 100MΩ (DC500V)
Dielectric Strength	1,500VAC (50/60Hz) for 1 minute
Contact Resistance	Max. 50mΩ
Vibration Resistance	10~55Hz 1.5mm double amplitude at X,Y,Z axis for 1 hour
Impact Resistance	30G
Operation Frequency	20 operations/minute
Durability	Electrical: 200,000 operations Mechanical: 500,000 operations
Protection	IP40
Ambient Temperature	-25~+50°C (not freezing condition)
Ambient Humidity	45~85% RH
Material	Contact block: Nylon (Flame-resist grade UL94-V0) Front Panel: ABS Printing Panel: PC

CONTROL COMPONENTS

SQUARE LIGHT

TOWER LIGHT

MICRO SWITCH

FOOT SWITCH

LIMIT SWITCH

POWER SWITCH

HORN SWITCH

CAN SWITCH

BUZZER

PHOTO SENSOR

PROXIMITY SENSOR

FLOATLENS LEVEL SWITCH

TIMER & COUNTER

RELAY

SOCKETS

TERMINAL BLOCK

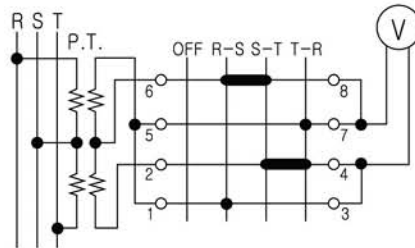
CONTROL BOX

PID TEMP. CONTROLLER

KCR-303V-2



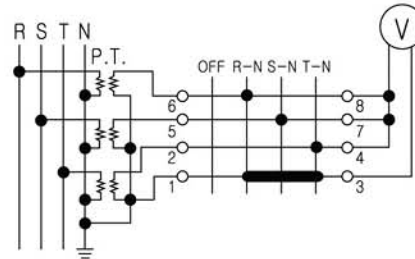
3Ø3W 2PT



KCR-303V-3



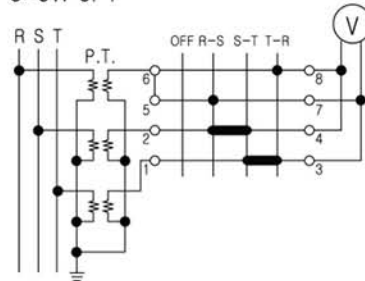
3Ø4W 3PT



KCR-303V-33



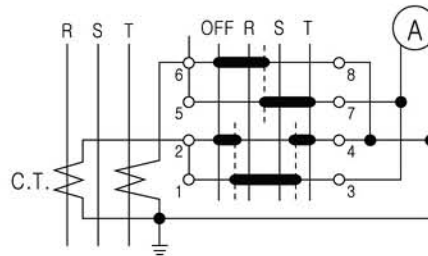
3Ø3W 3PT



KCR-303A-2



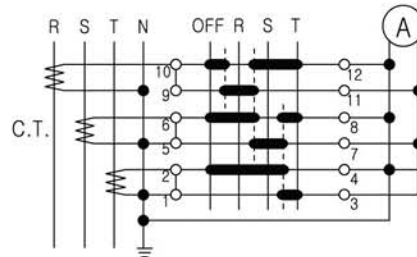
3 ϕ 3W 2CT



KCR-303A-3



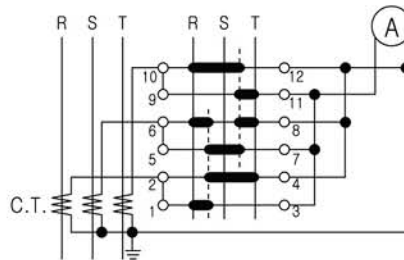
3 ϕ 4W 3CT



KCR-303A-33



3 ϕ 3W 3CT



CONTROL COMPONENTS

SQUARE LIGHT

TOWER LIGHT

MICRO SWITCH

FOOT SWITCH

LIMIT SWITCH

POWER SWITCH

HOIST SWITCH

CAM SWITCH

BUZZER

PHOTO SENSOR

PROXIMITY SENSOR

FLOATLESS LEVEL SWITCH

TIMER & COUNTER

RELAY

SOCKETS

TERMINAL BLOCK

CONTROL BOX

PID TEMP. CONTROLLER

KSC-22

Quick Selection Guide



2. Order-made Products ONLY

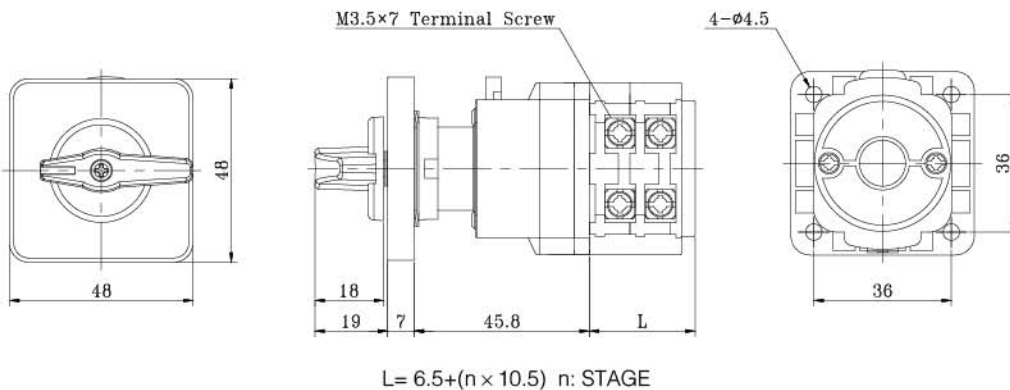
KSC-22 - H

① ② ③

- ① none: Manual Return | R: Auto Return | K: Key type
- ② Refer to the Appendix **'OPTIONAL CIRCUITS'**
- ③ H type handle available

Dimensions

KSC-22



Contact ratings

AC					DC				
Voltage	Resistive Load		Inductive Load		Voltage	Resistive Load		Inductive Load	
	Current	Capacity	Current	Capacity		Current	Capacity	Current	Capacity
125VAC	15A	2500VA	10A	1250VA	24VDC	20A	480W	15A	360W
250VAC	10A	2500VA	6A	1500VA	110VDC	5A	550W	3A	330W
440VAC	2.5A	1100VA	2A	880VA	250VDC	1A	250W	0.5A	125W

Specification

Insulation Resistance	min. 100MΩ (DC500V)
Dielectric Strength	1,500VAC (50/60Hz) for 1 minute
Contact Resistance	Max. 50mΩ
Vibration Resistance	10~55Hz 1.5mm double amplitude at X,Y,Z axis for 1 hour
Impact Resistance	30G
Operation Frequency	20 operations/minute
Durability	Electrical: 200,000 operations Mechanical: 500,000 operations
Protection	IP65
Ambient Temperature	-25~+50°C (not freezing condition)
Ambient Humidity	45~85% RH
Material	Contact block: Nylon (Flame-resist grade UL94-V0) Front Panel: ABS Printing Panel: PC

CONTROL COMPONENTS

SQUARE LIGHT

TOWER LIGHT

MICRO SWITCH

FOOT SWITCH

LIMIT SWITCH

POWER SWITCH

HORN SWITCH

CAM SWITCH

BUZZER

PHOTO SENSOR

PROXIMITY SENSOR

FLOAT/LEVEL SWITCH

TIMER & COUNTER

RELAY

SOCKETS

TERMINAL BLOCK

CONTROL BOX

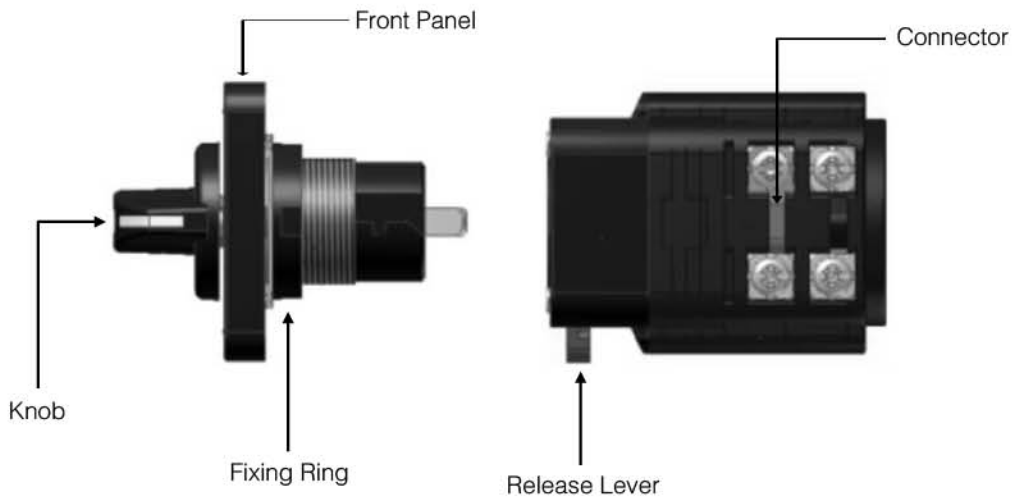
PID TEMP. CONTROLLER

How to remove name plate

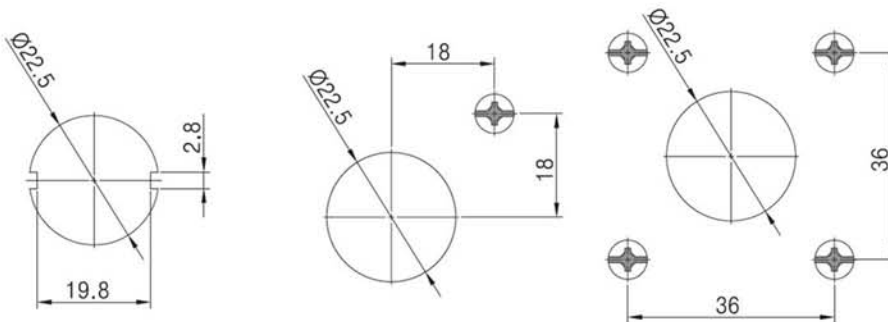


- 1) With screw driver, push the rectangular groove.
- 2) Unscrew knob-fixing bolt.
- 3) Remove the knob.
- 4) Remove the name plate.

Parts



Installation



CONTROL COMPONENTS

SQUARE LIGHT

TOWER LIGHT

MICRO SWITCH

FOOT SWITCH

LIMIT SWITCH

POWER SWITCH

HORN SWITCH

CAM SWITCH

BUZZER

PHOTO SENSOR

PROXIMITY SENSOR

FLOAT/LEVEL SWITCH

TIMER & COUNTER

RELAY

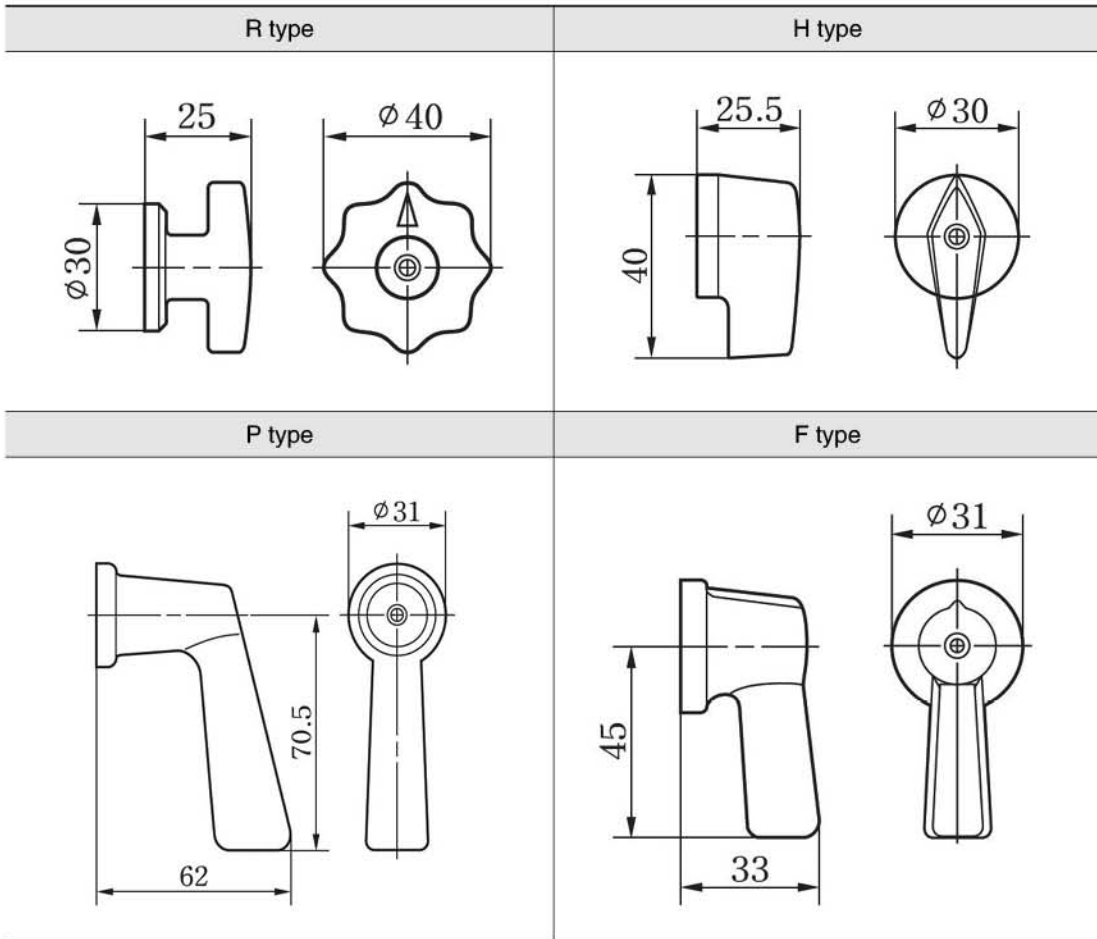
SOCKETS

TERMINAL BLOCK

CONTROL BOX

PID TEMP. CONTROLLER

Dimensions of Knob



APPENDIX: Optional circuits

CONTROL
COMPONENTS

SQUARE
LIGHT

TOWER
LIGHT

MICRO
SWITCH

FOOT
SWITCH

LIMIT
SWITCH

POWER
SWITCH

HORN
SWITCH

CAM
SWITCH

BUZZER

PHOTO
SENSOR

PROXIMITY
SENSOR

FLOAT/LENS
LEVEL SWITCH

TIMER &
COUNTER

RELAY

SOCKETS

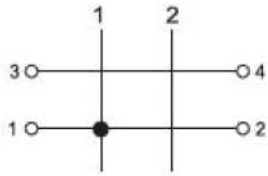
TERMINAL
BLOCK

CONTROL
BOX

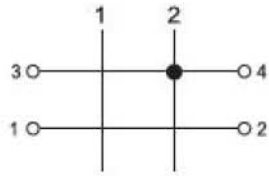
PID TEMP.
CONTROLLER

2Steps 1stage / 2steps 2stages

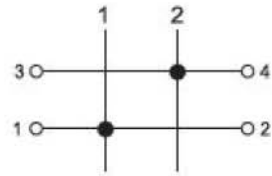
2101



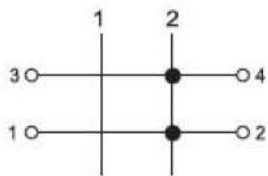
2102



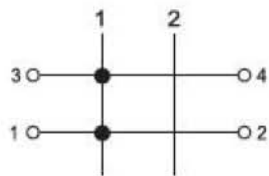
2103



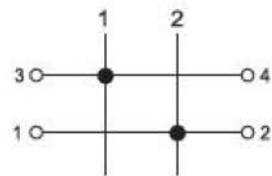
2104



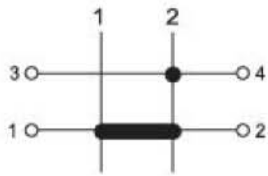
2105



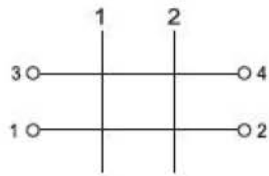
2106



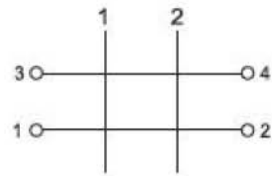
2107



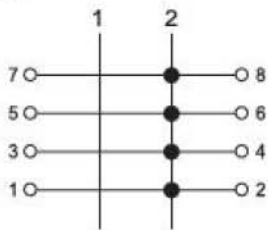
2108



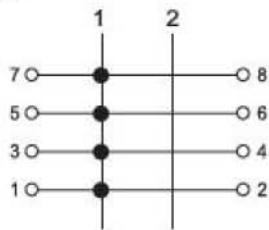
2109



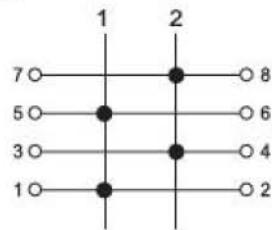
2201



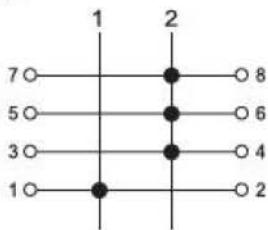
2202



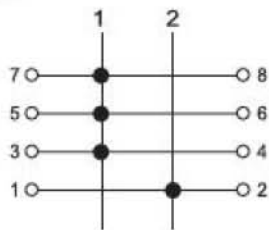
2203



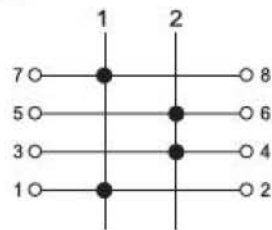
2204



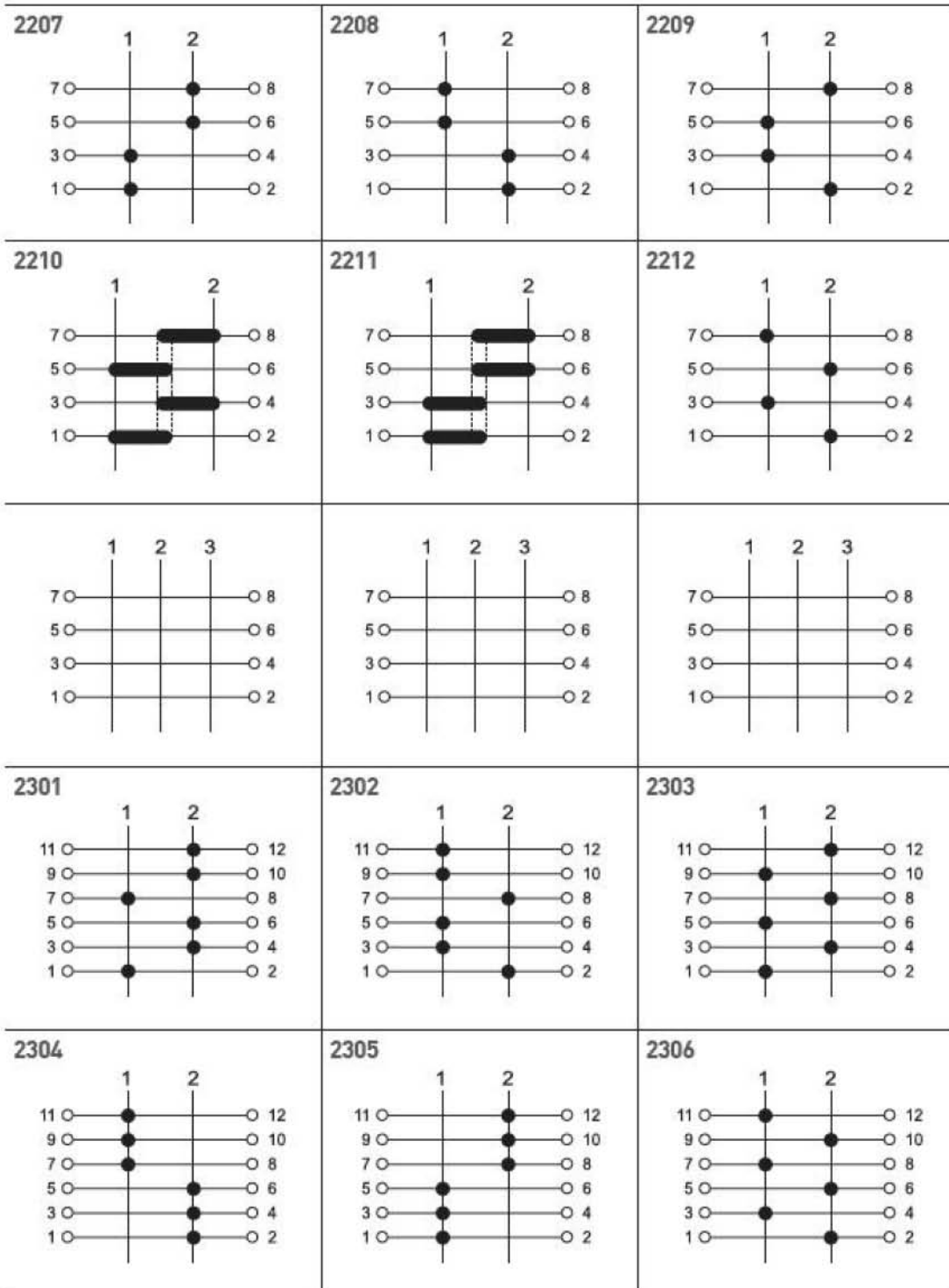
2205



2206



2Steps 2stages / 2steps 3stages



CONTROL COMPONENTS

SQUARE LIGHT

TOWER LIGHT

MICRO SWITCH

FOOT SWITCH

LIMIT SWITCH

POWER SWITCH

HOIST SWITCH

CAM SWITCH

BUZZER

PHOTO SENSOR

PROXIMITY SENSOR

FLOAT/LEVEL SWITCH

TIMER & COUNTER

RELAY

SOCKETS

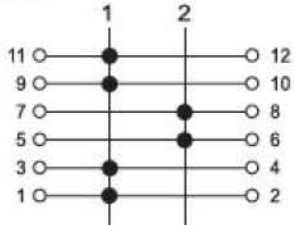
TERMINAL BLOCK

CONTROL BOX

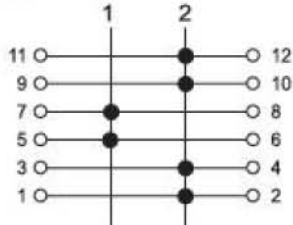
PID TEMP. CONTROLLER

2Steps 3stages / 2steps 4stages

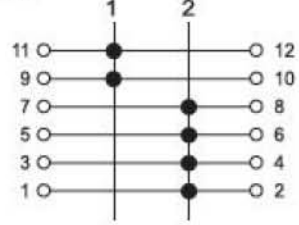
2307



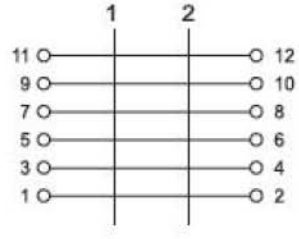
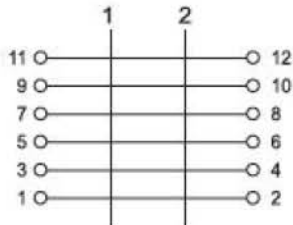
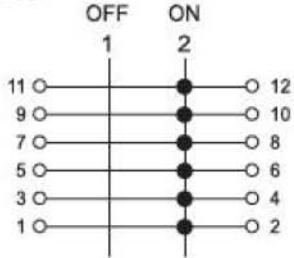
2308



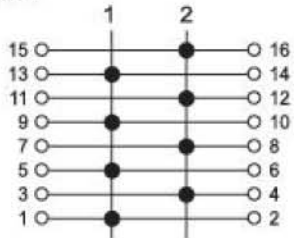
2309



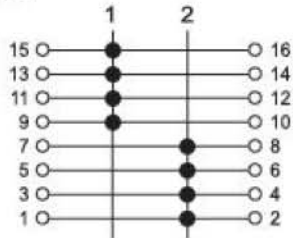
2310



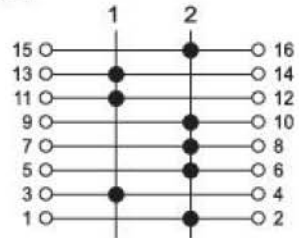
2401



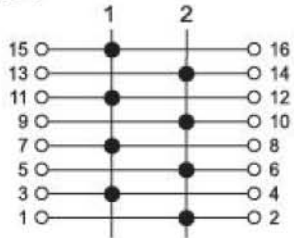
2402



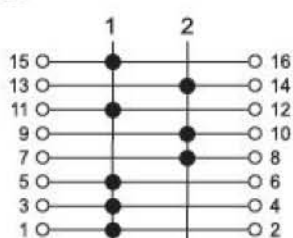
2403



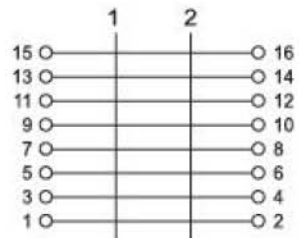
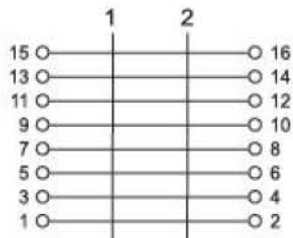
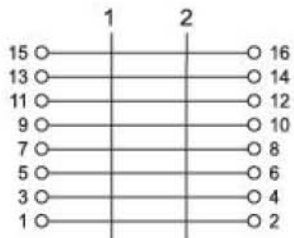
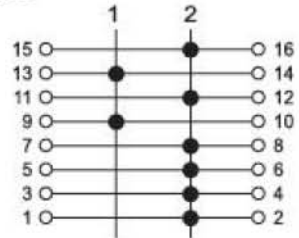
2404



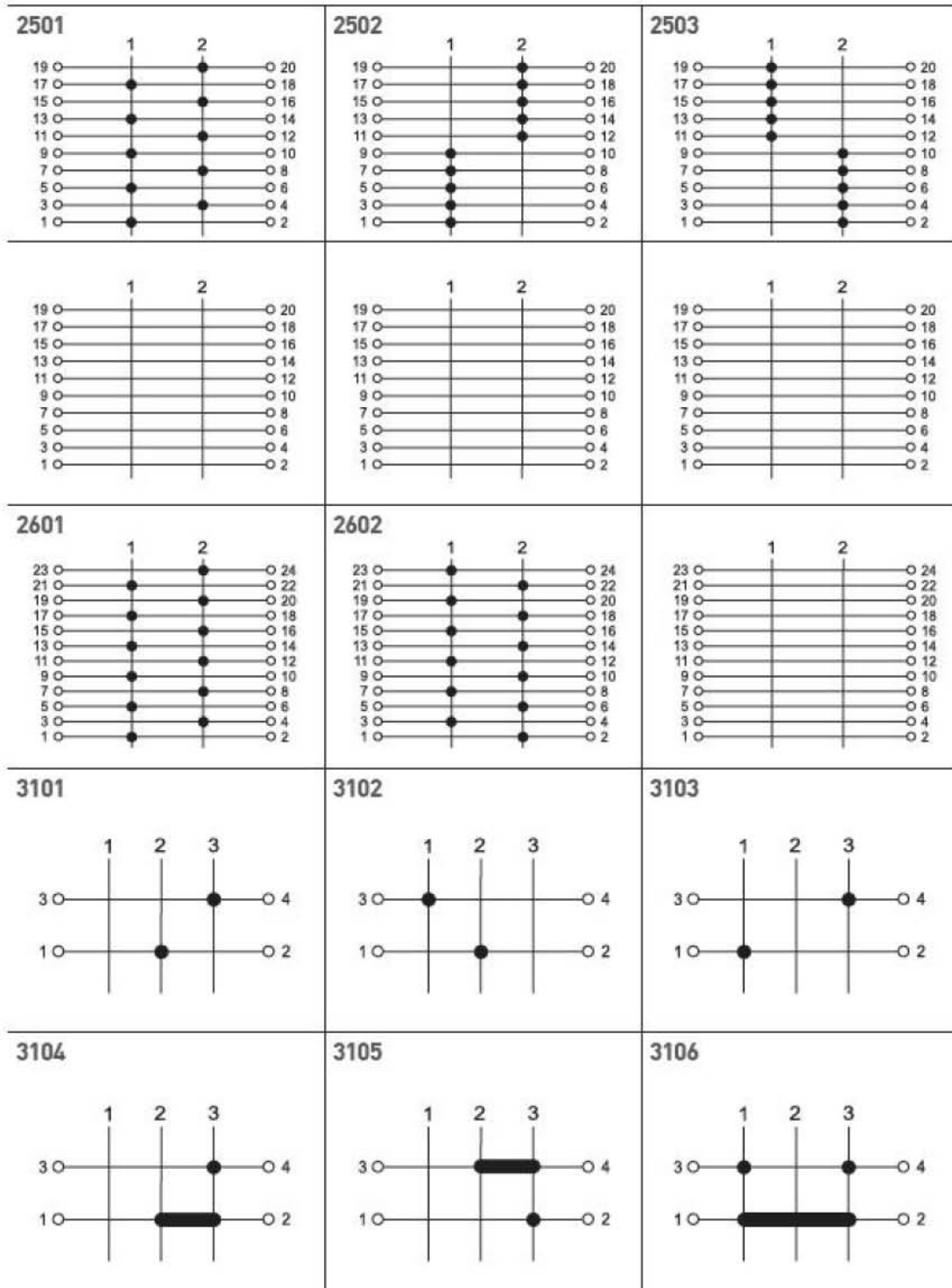
2405



2406

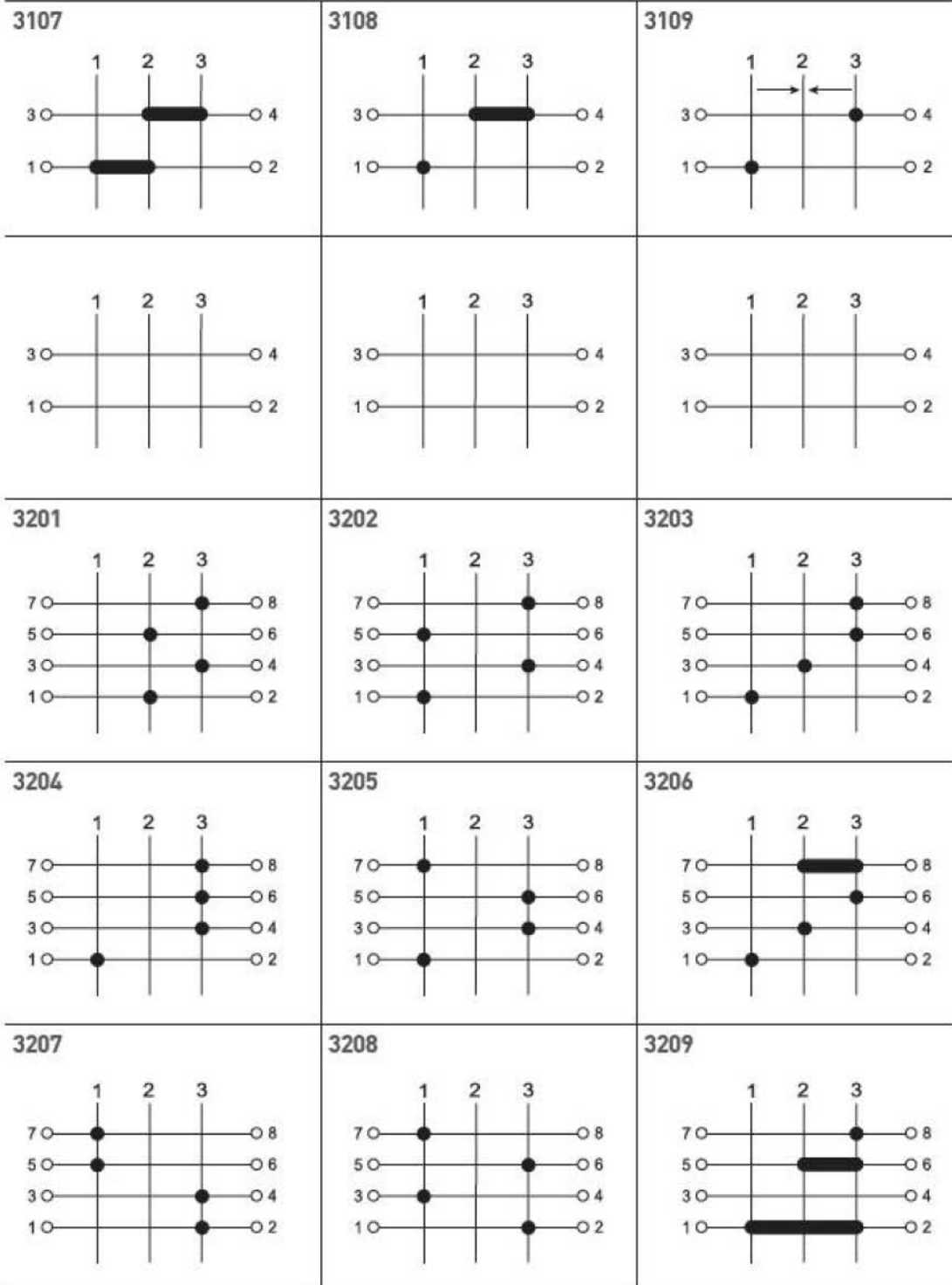


2Steps 5stages / 2steps 6stages / 3steps 1stage



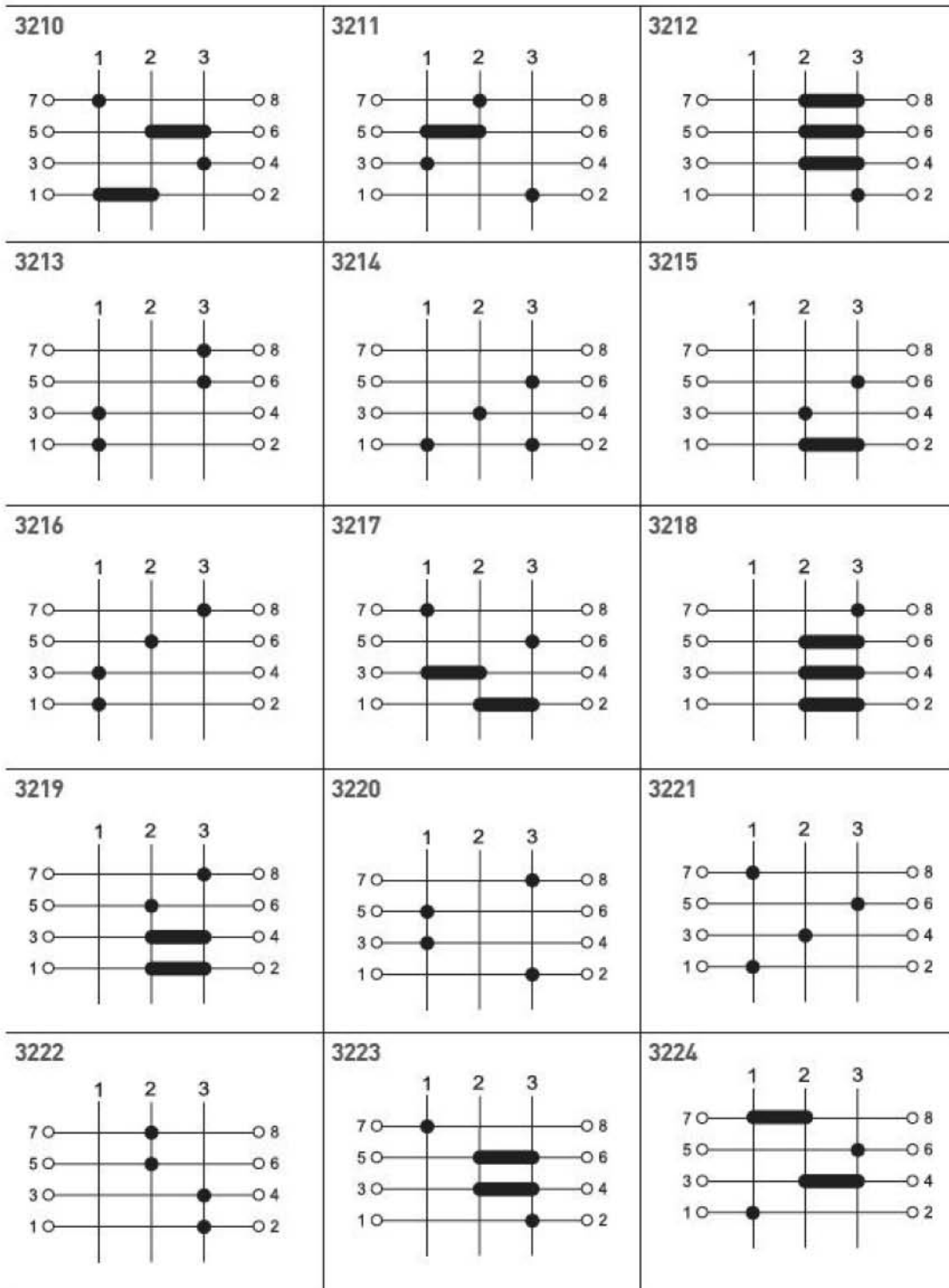
- CONTROL COMPONENTS**
- SQUARE LIGHT**
- TOWER LIGHT**
- MICRO SWITCH**
- FOOT SWITCH**
- LIMIT SWITCH**
- POWER SWITCH**
- HORN SWITCH**
- CAM SWITCH**
- BUZZER**
- PHOTO SENSOR**
- PROXIMITY SENSOR**
- FLOAT/LEVEL SWITCH**
- TIMER & COUNTER**
- RELAY**
- SOCKETS**
- TERMINAL BLOCK**
- CONTROL BOX**
- PID TEMP. CONTROLLER**

3steps 1stage / 3steps 2stages



CAM SWITCH

3steps 2stages



CONTROL COMPONENTS

SQUARE LIGHT

TOWER LIGHT

MICRO SWITCH

FOOT SWITCH

LIMIT SWITCH

POWER SWITCH

HOIST SWITCH

CAM SWITCH

BUZZER

PHOTO SENSOR

PROXIMITY SENSOR

FLOAT/LEVEL SWITCH

TIMER & COUNTER

RELAY

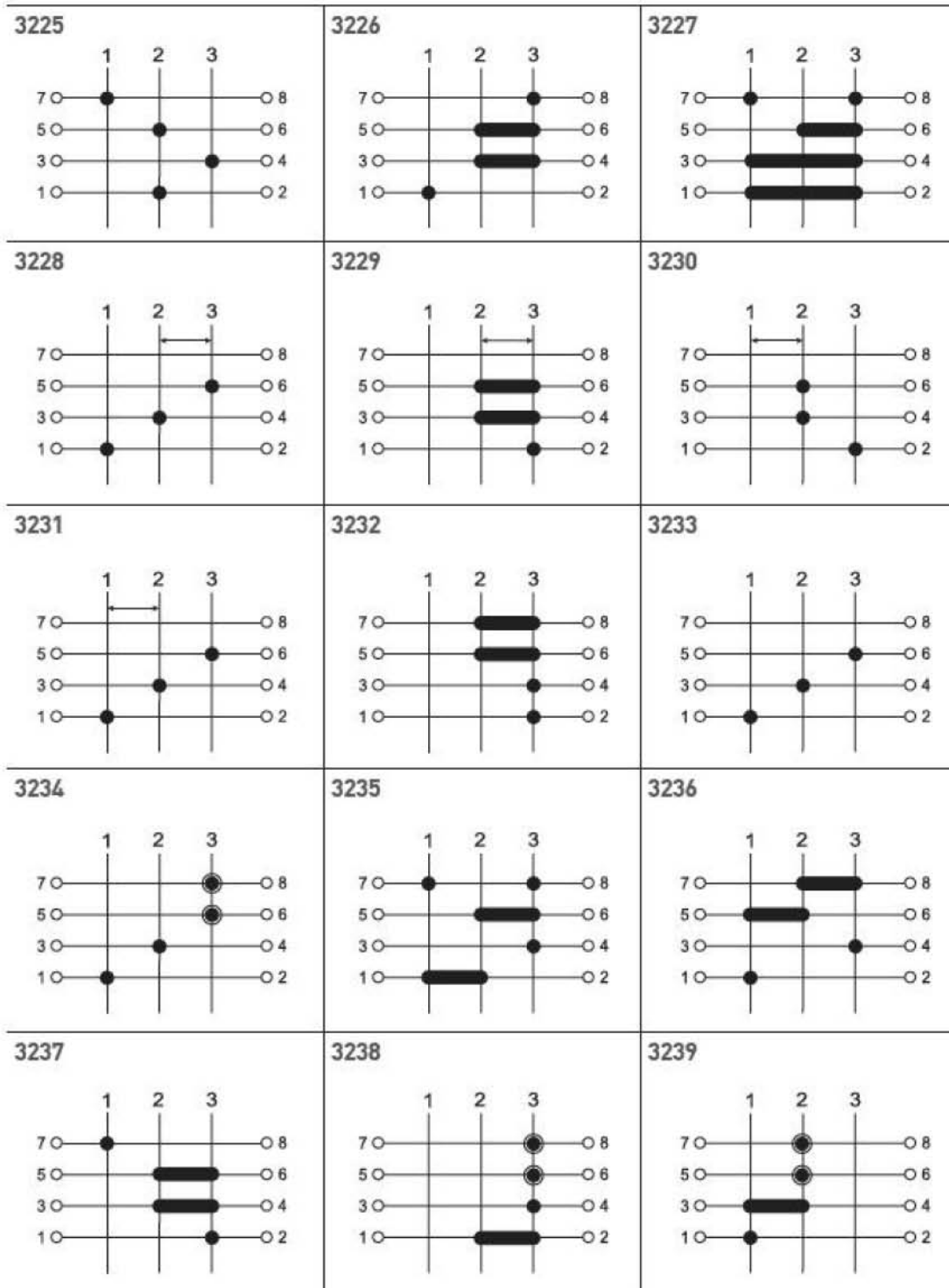
SOCKETS

TERMINAL BLOCK

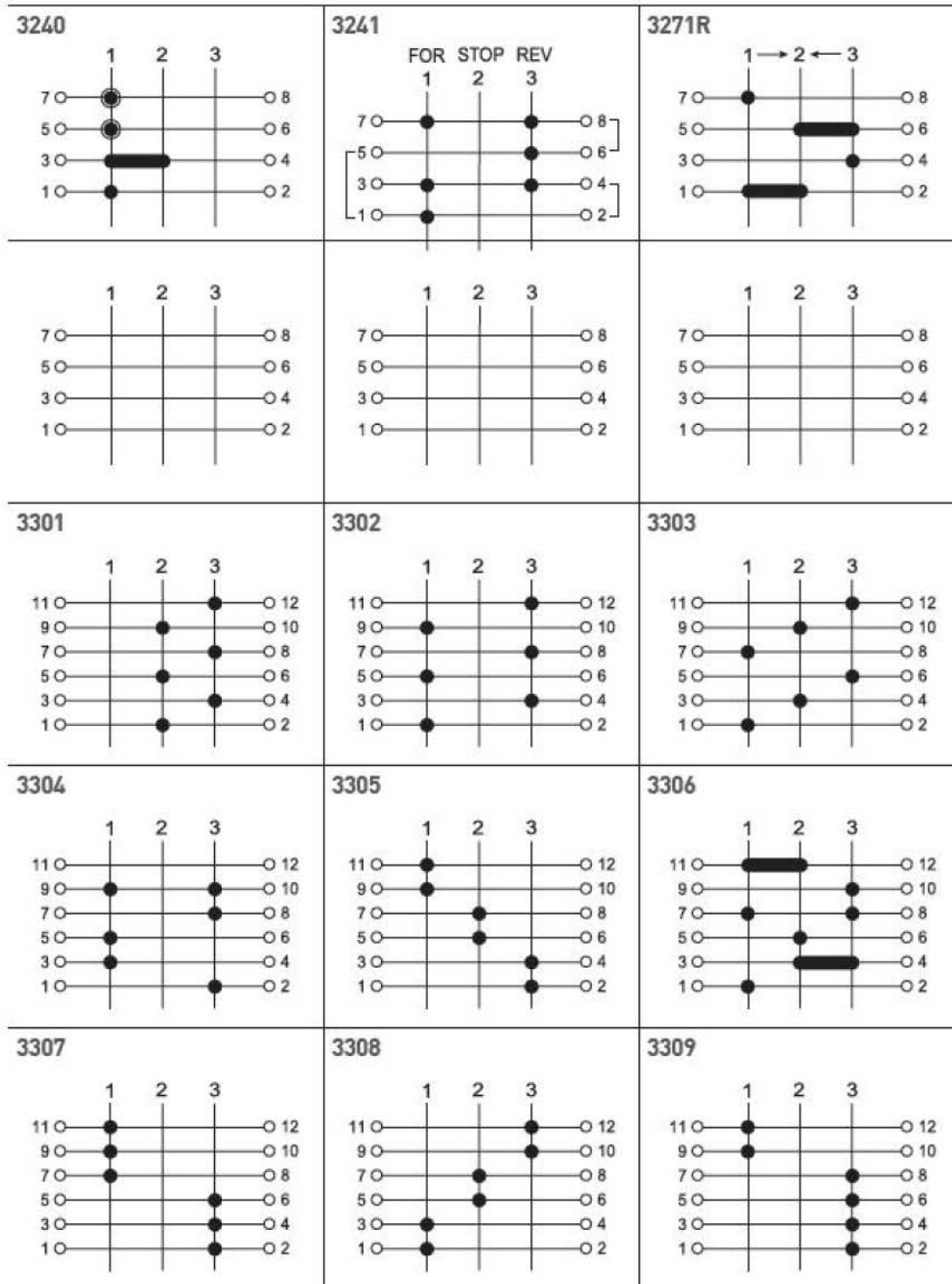
CONTROL BOX

PID TEMP. CONTROLLER

3steps 2stages



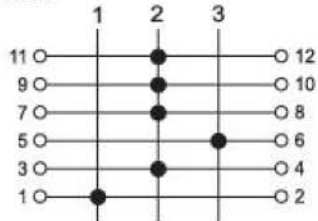
3steps 2stages / 3steps 3stages



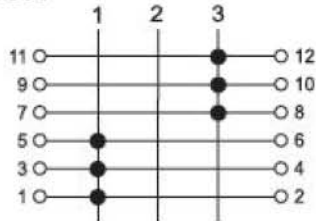
- CONTROL COMPONENTS**
- SQUARE LIGHT**
- TOWER LIGHT**
- MEMO SWITCH**
- FOOT SWITCH**
- LIMIT SWITCH**
- POWER SWITCH**
- HOIST SWITCH**
- CAM SWITCH**
- BUZZER**
- PHOTO SENSOR**
- PROXIMITY SENSOR**
- FLOAT/LEVEL SWITCH**
- TIMER & COUNTER**
- RELAY**
- SOCKETS**
- TERMINAL BLOCK**
- CONTROL BOX**
- PID TEMP. CONTROLLER**

3steps 3stages

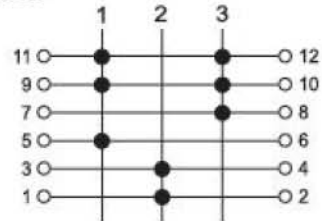
3310



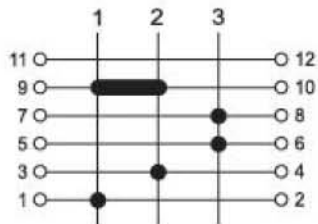
3311



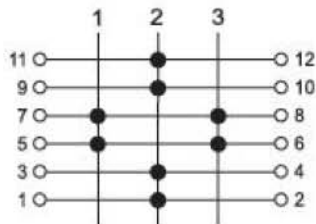
3312



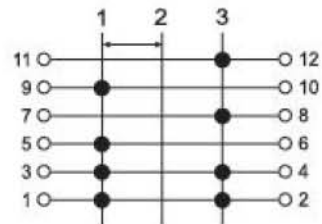
3313



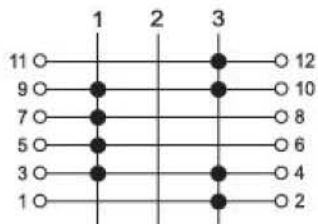
3314



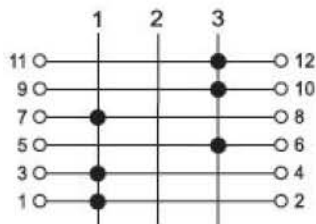
3315



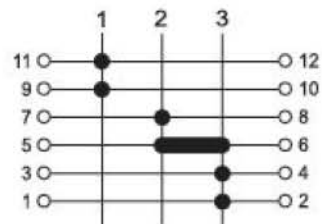
3316



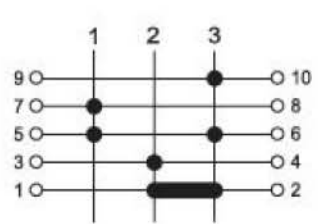
3317



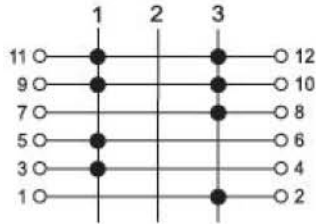
3318



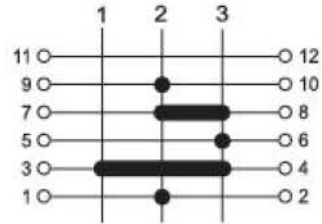
3319



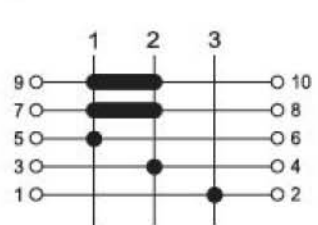
3320



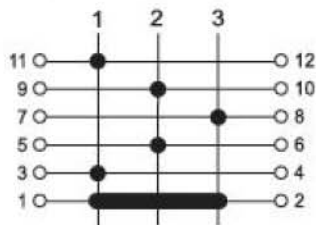
3321



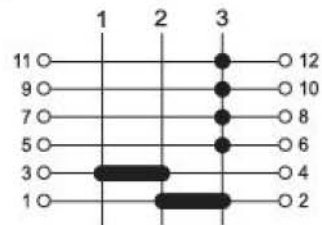
3322



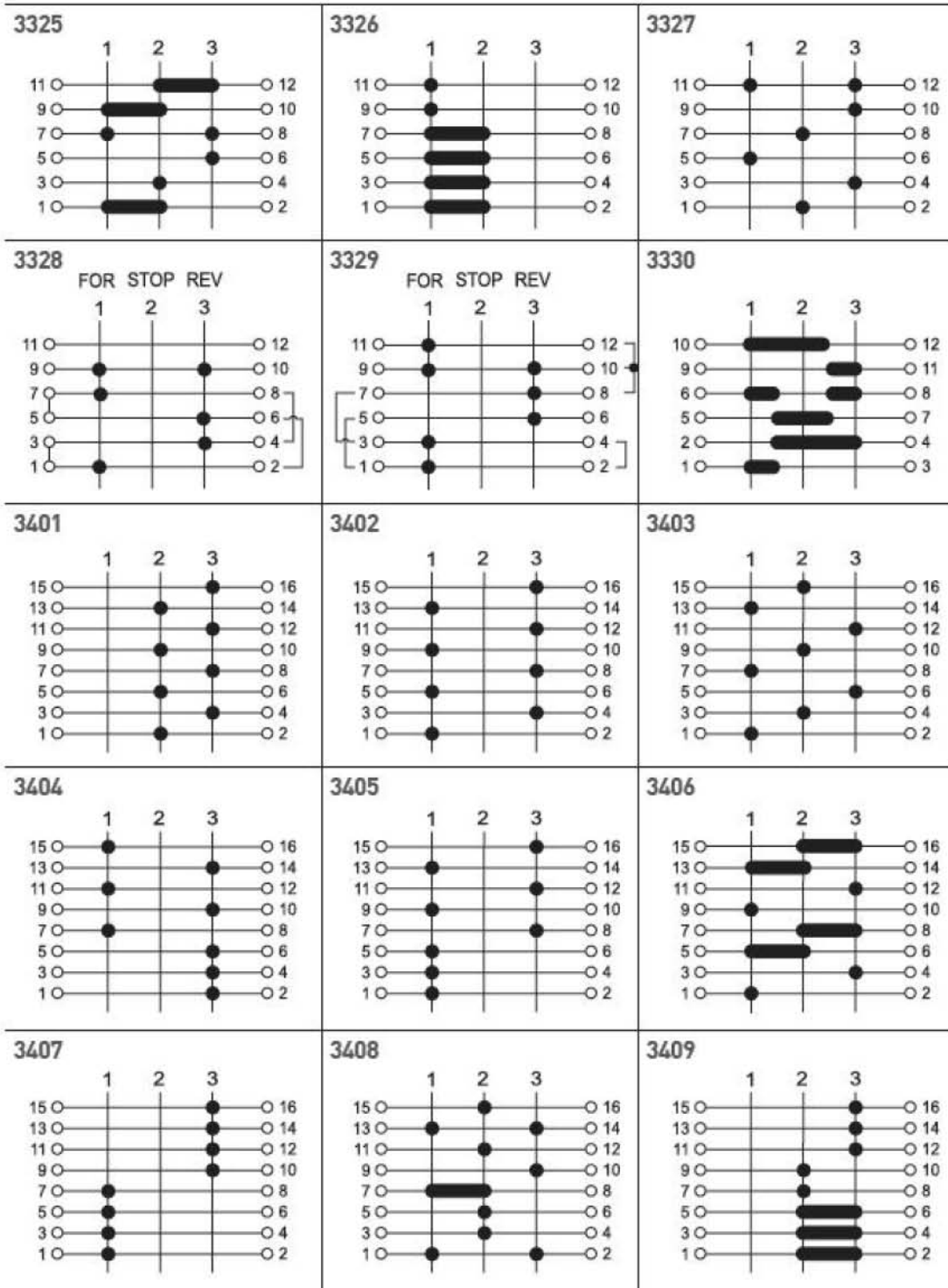
3323



3324



3steps 3stages / 3steps 4stages



CONTROL COMPONENTS

SQUARE LIGHT

TOWER LIGHT

MINOR SWITCH

FOOT SWITCH

LIMIT SWITCH

POWER SWITCH

HOIST SWITCH

CAM SWITCH

BUZZER

PHOTO SENSOR

PROXIMITY SENSOR

FLOAT/LEVEL SWITCH

TIMER & COUNTER

RELAY

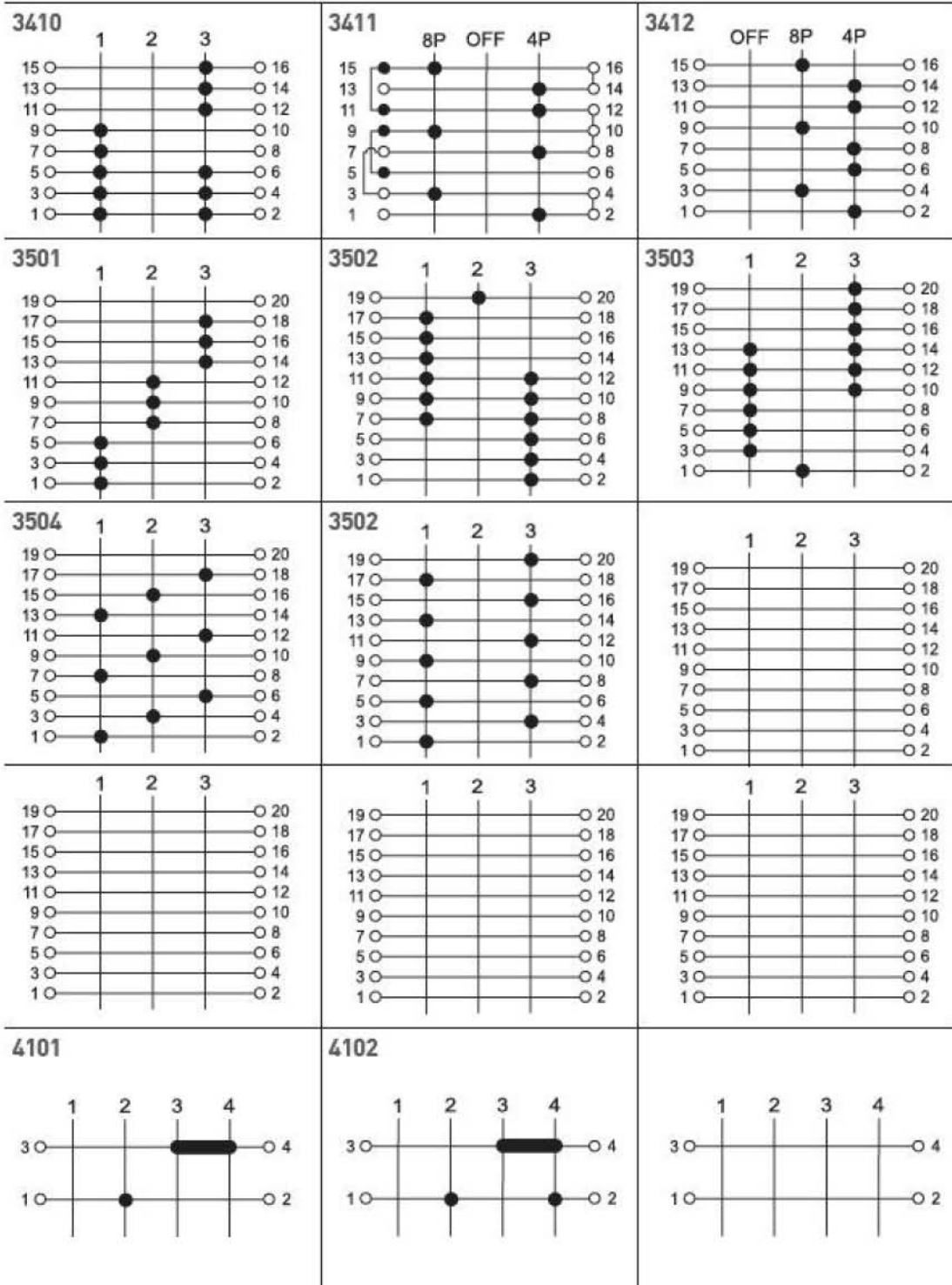
SOCKETS

TERMINAL BLOCK

CONTROL BOX

PID TEMP. CONTROLLER

3steps 4stages / 3steps 5stages / 4steps 1stage



CAM SWITCH

4steps 2stages

CONTROL COMPONENTS

SQUARE LIGHT

TOWER LIGHT

MICRO SWITCH

FOOT SWITCH

LIMIT SWITCH

POWER SWITCH

HORN SWITCH

CAM SWITCH

BUZZER

PHOTO SENSOR

PROXIMITY SENSOR

FLOAT/LEVEL SWITCH

TIMER & COUNTER

RELAY

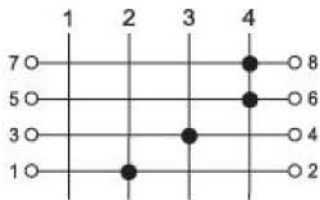
SOCKETS

TERMINAL BLOCK

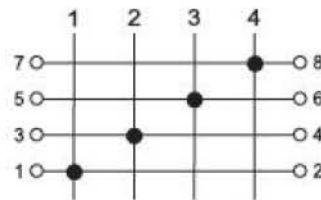
CONTROL BOX

HD TEMP. CONTROLLER

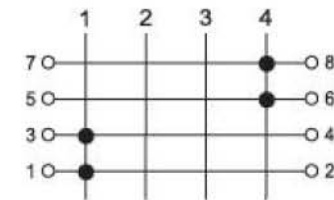
4201



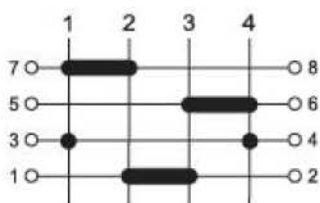
4202



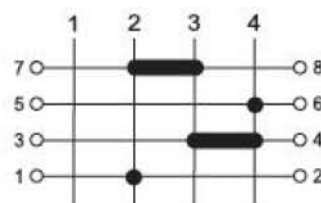
4203



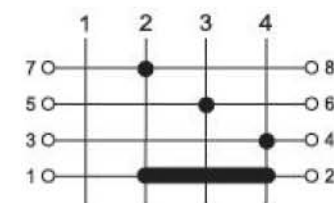
4204



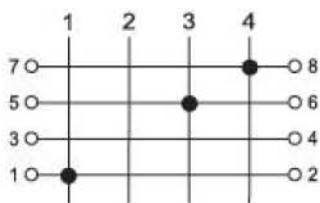
4205



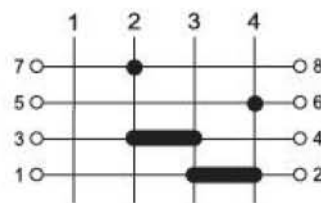
4206



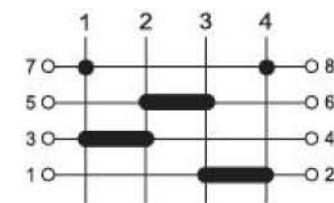
4207



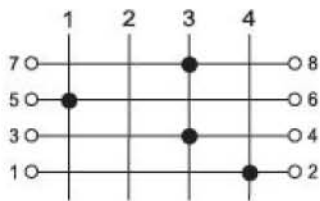
4208



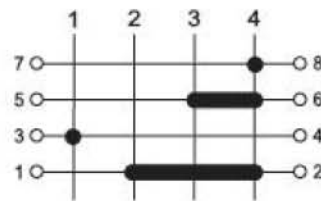
4209



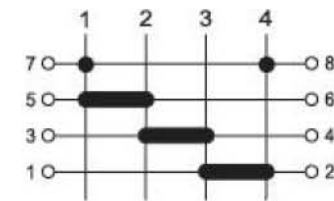
4210



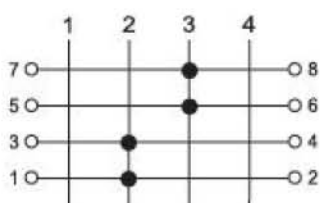
4211



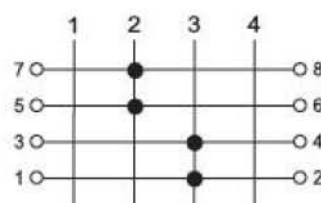
4212



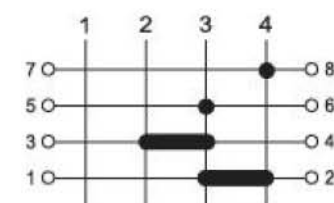
4213



4214

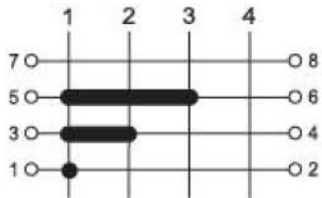


4215

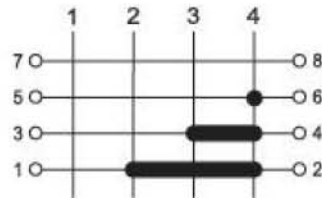


4steps 2stages

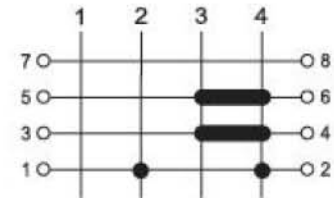
4216



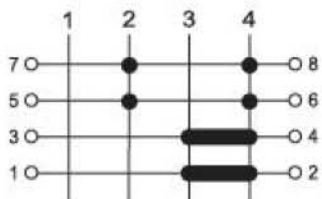
4217



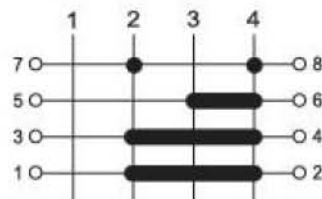
4218



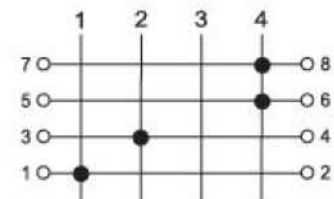
4219



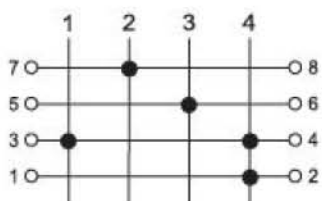
4220



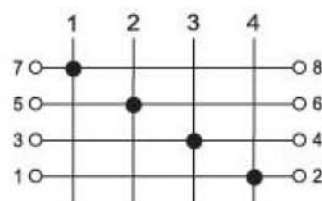
4221



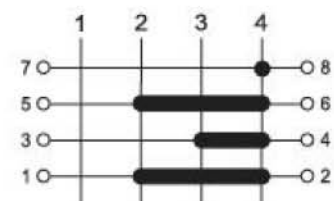
4222



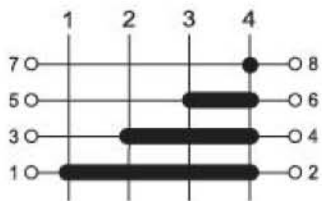
4223



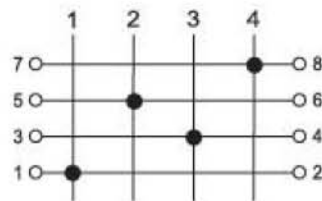
4224



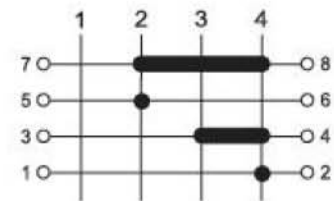
4225



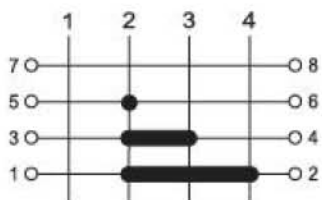
4226



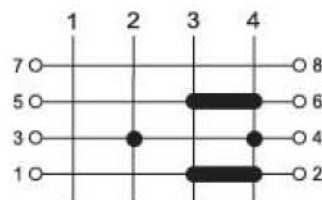
4227



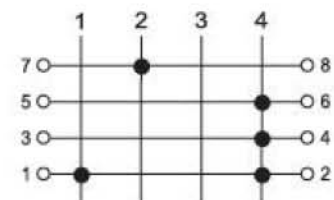
4228



4229

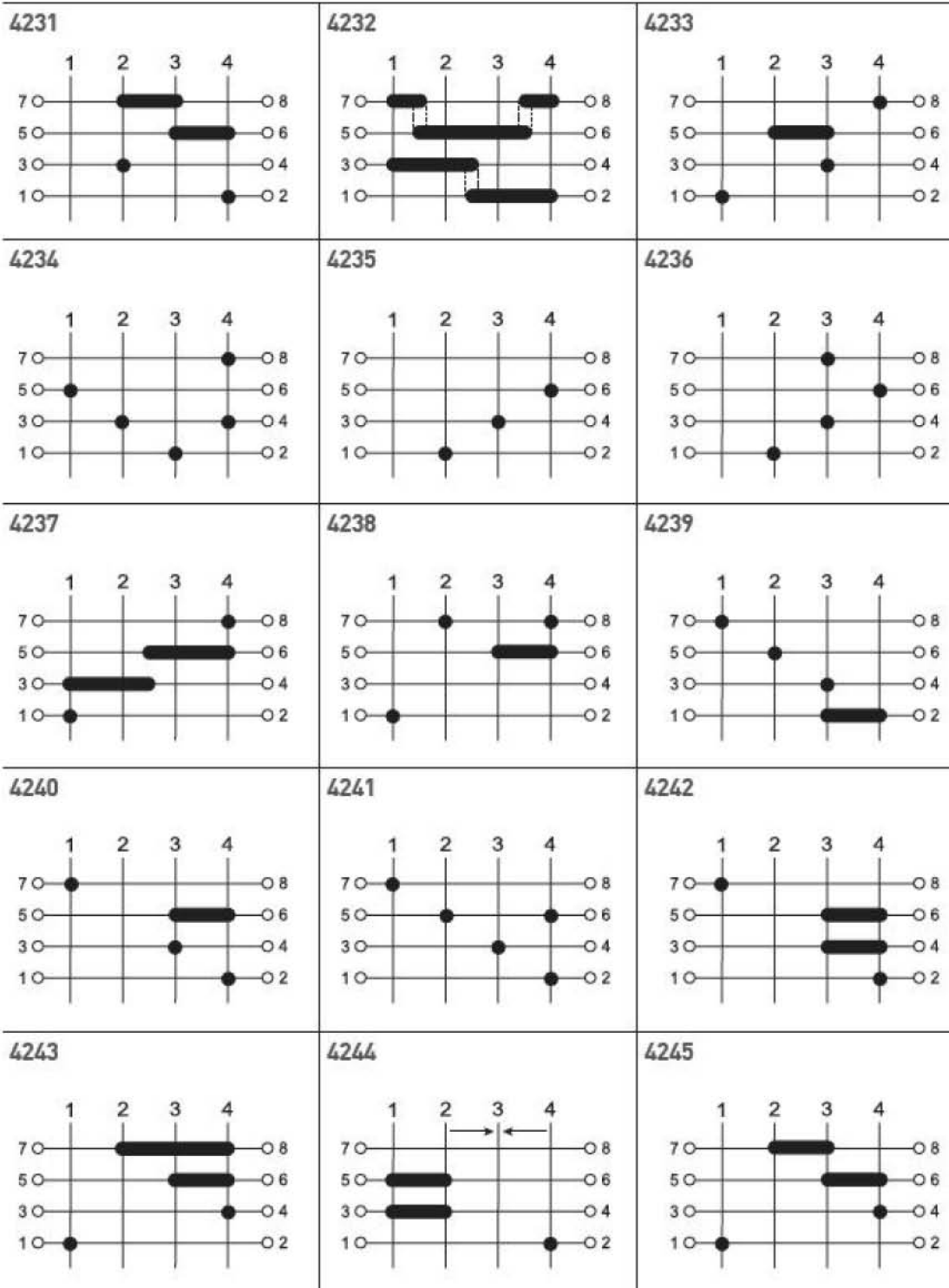


4230



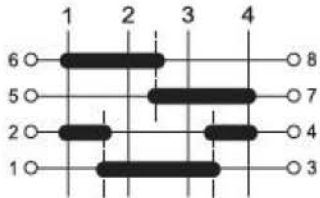
CAM SWITCH

4steps 2stages

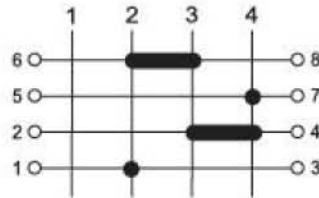


4steps 2stages / 4steps 3stages

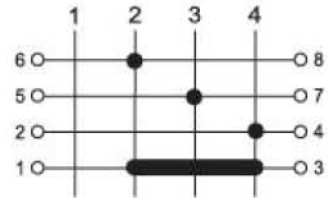
4246



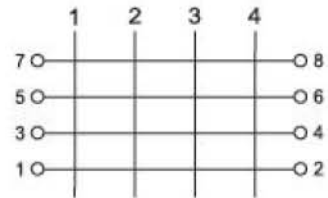
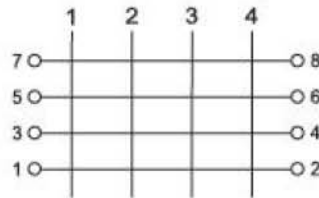
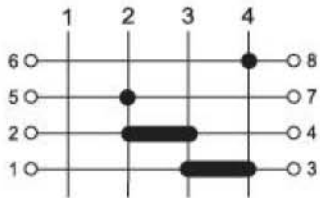
4247



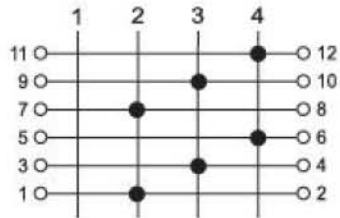
4248



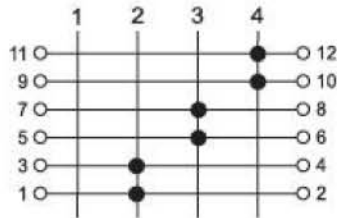
4249



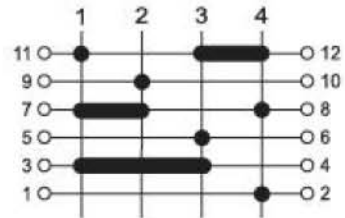
4301



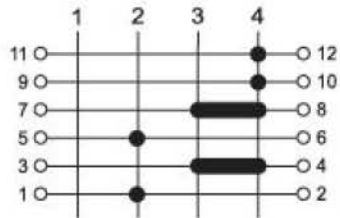
4302



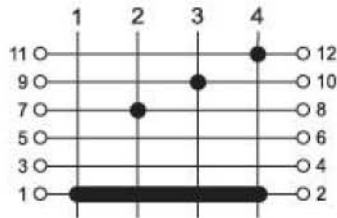
4303



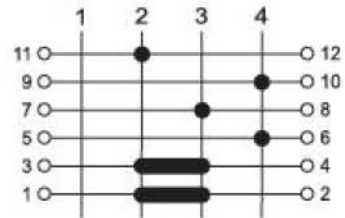
4304



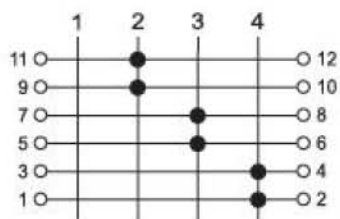
4305



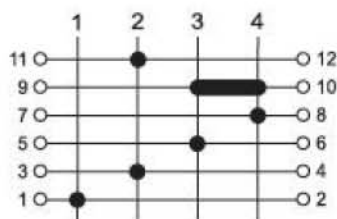
4306



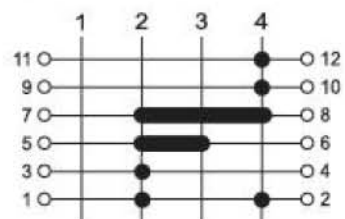
4307



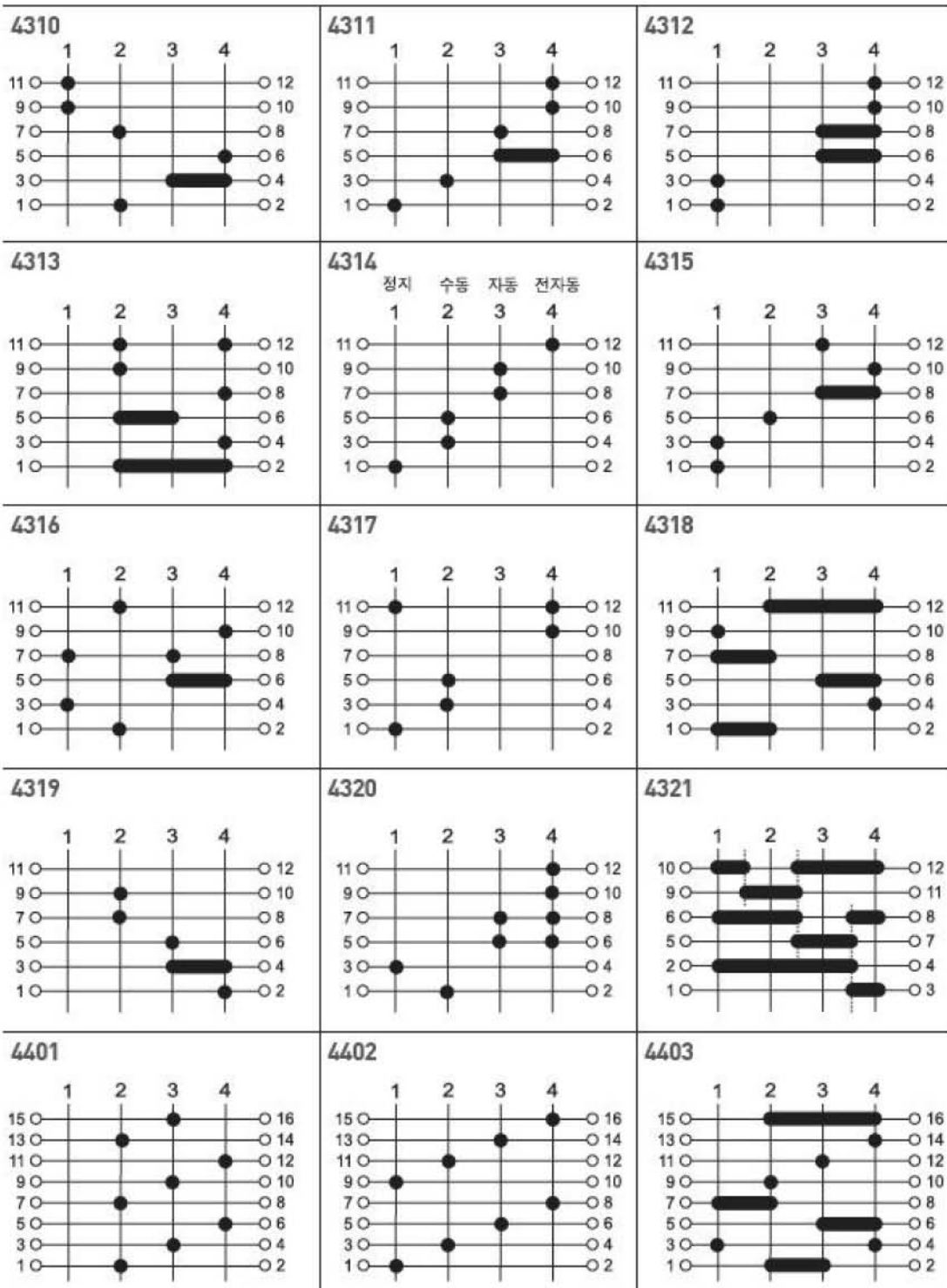
4308



4309



4steps 3stages / 4steps 4stages



CONTROL COMPONENTS

SQUARE LIGHT

TOWER LIGHT

MICRO SWITCH

FOOT SWITCH

LIMIT SWITCH

POWER SWITCH

HOIST SWITCH

CAM SWITCH

BUZZER

PHOTO SENSOR

PROXIMITY SENSOR

FLOAT/LEVEL SWITCH

TIMER & COUNTER

RELAY

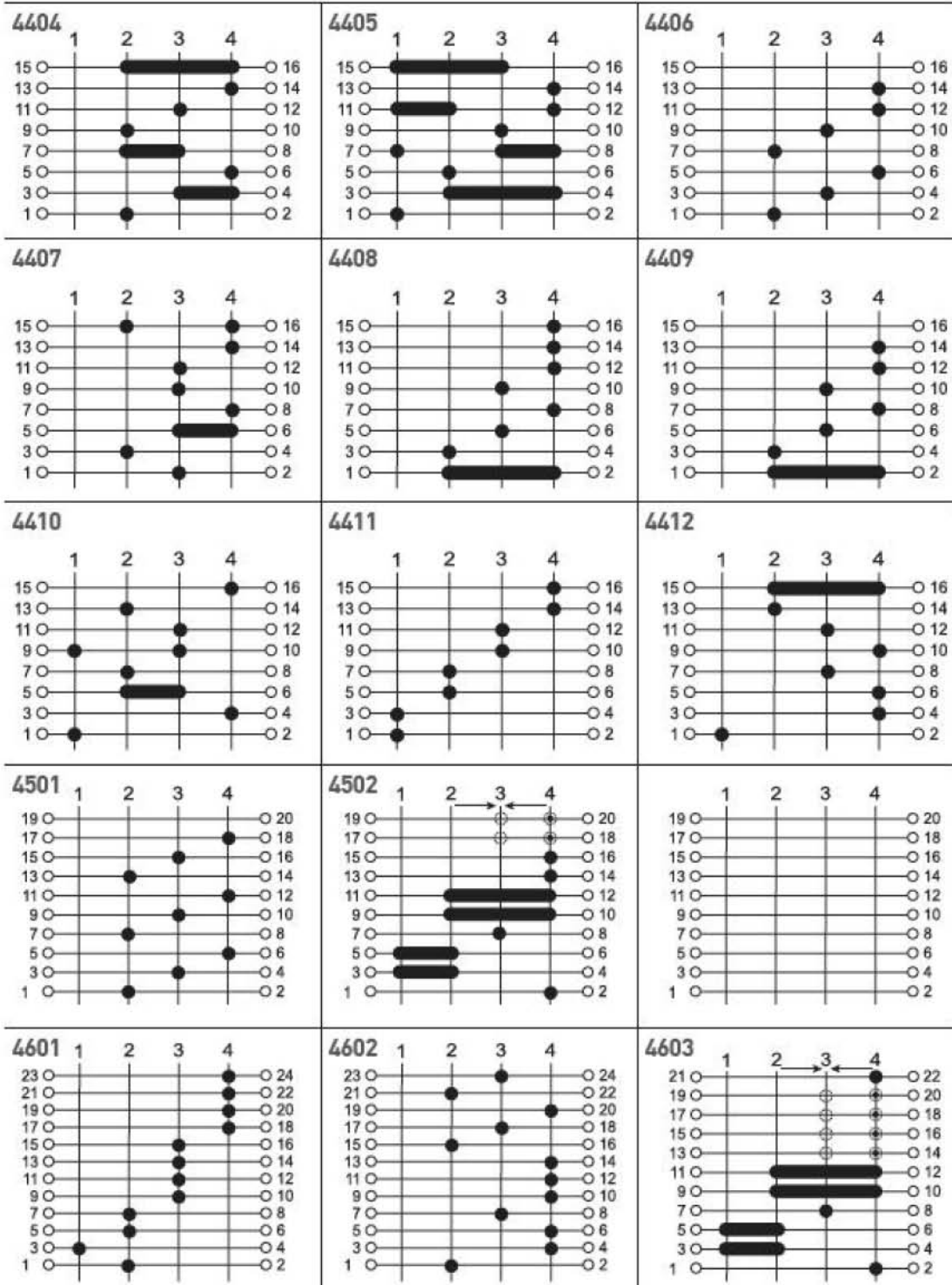
SOCKETS

TERMINAL BLOCK

CONTROL BOX

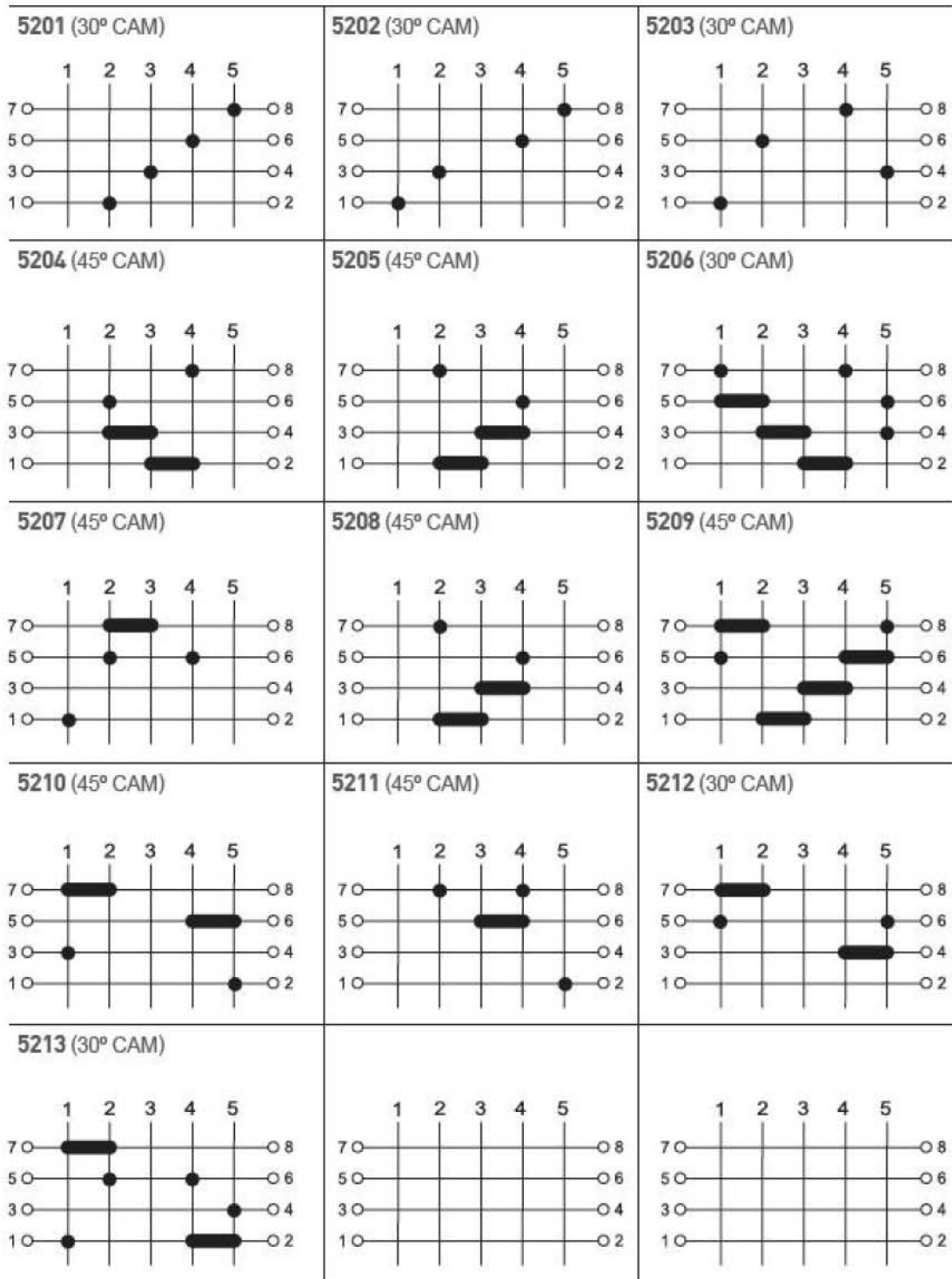
PID TEMP. CONTROLLER

4steps 4stages / 4steps 5stages / 4steps 6stages

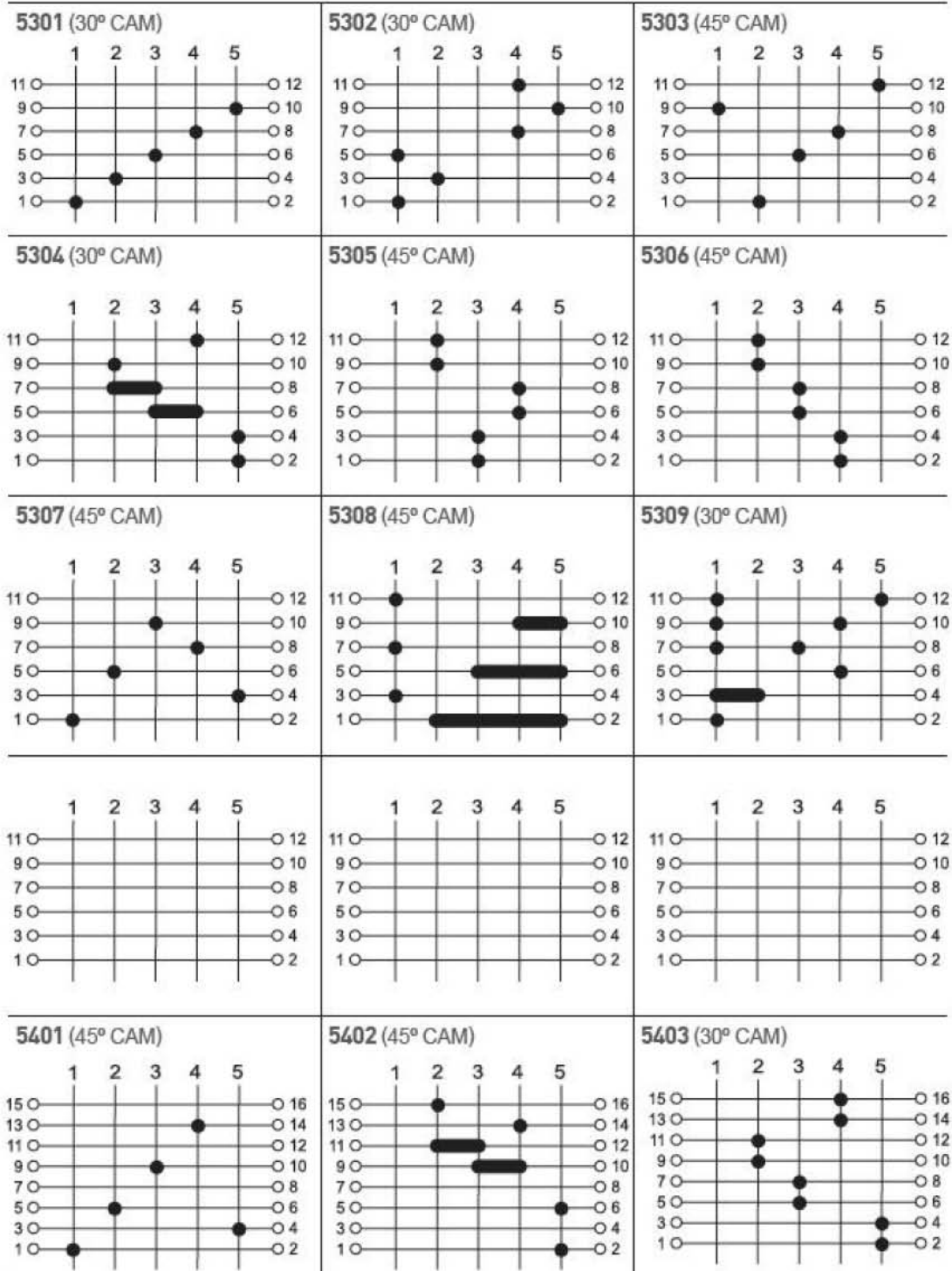


CAM SWITCH

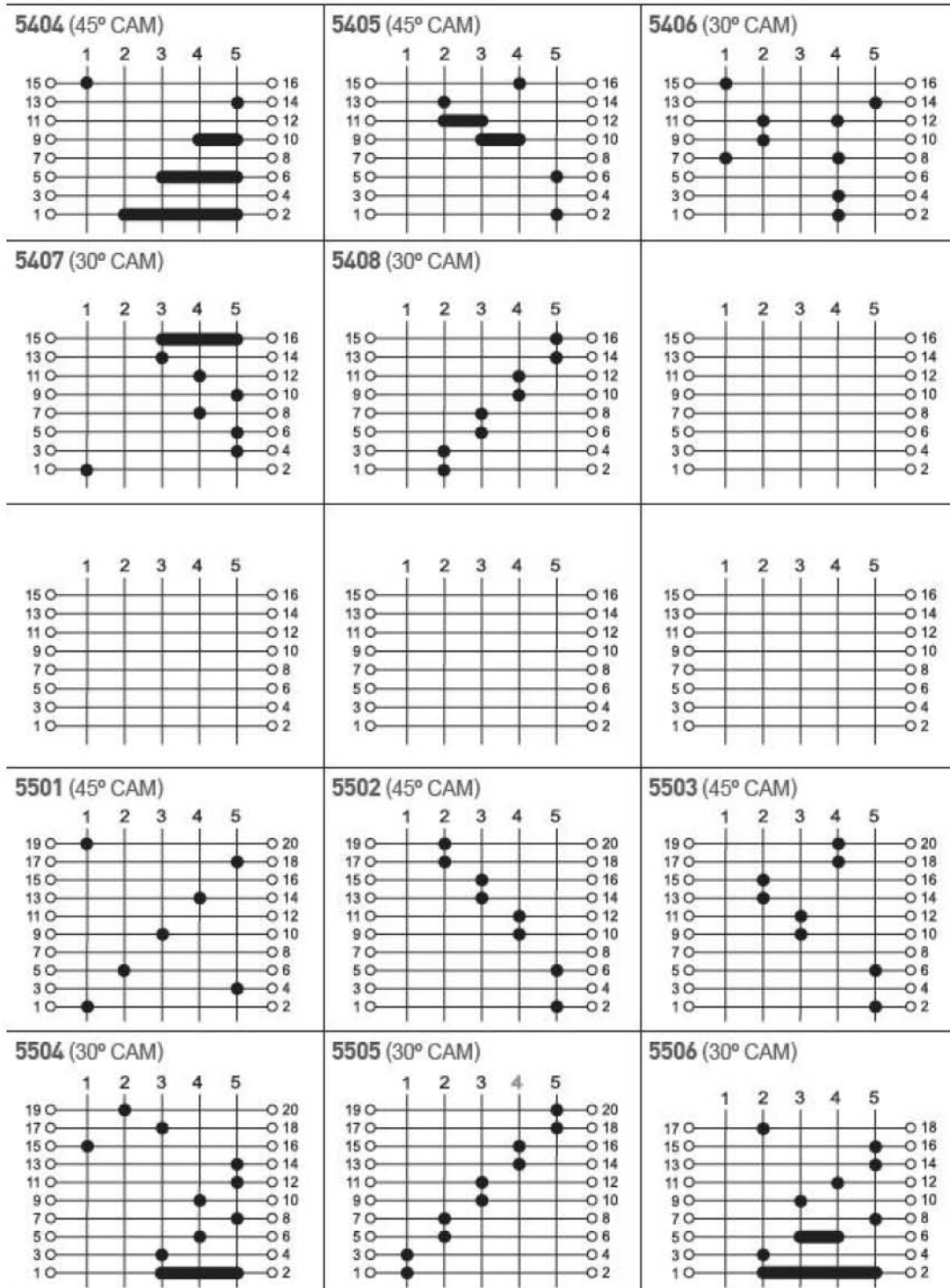
5steps 2stages



5steps 3stages / 5steps 4stages



5steps 4stages / 5steps 5stages



CONTROL COMPONENTS

SQUARE LIGHT

TOWER LIGHT

MEMO SWITCH

FOOT SWITCH

LIMIT SWITCH

POWER SWITCH

HOIST SWITCH

CAM SWITCH

BUZZER

PHOTO SENSOR

PROXIMITY SENSOR

FLOAT/LEVEL SWITCH

TIMER & COUNTER

RELAY

SOCKETS

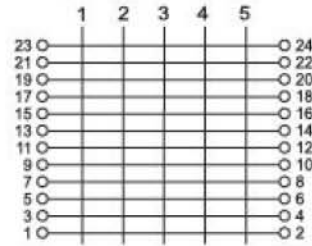
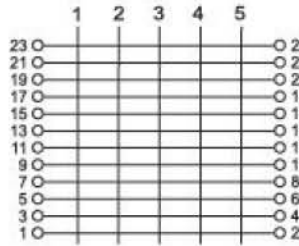
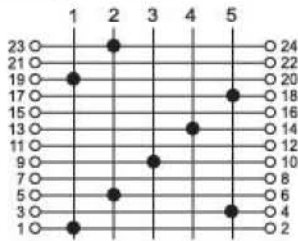
TERMINAL BLOCK

CONTROL BOX

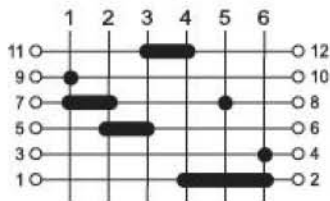
PID TEMP. CONTROLLER

5steps 6stages / 6steps 3stages / 6steps 4stages

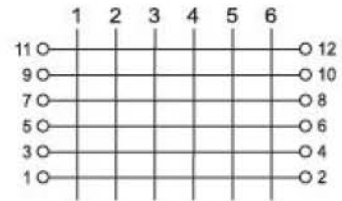
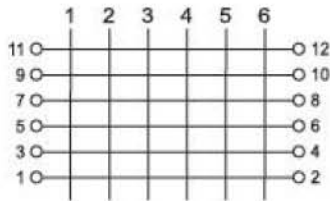
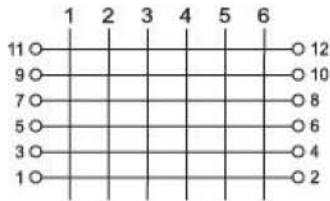
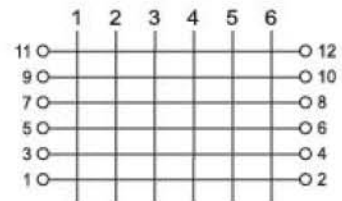
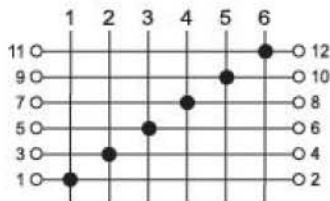
5601 (45° CAM)



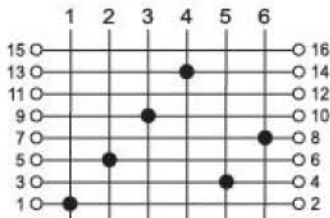
6301 (30° CAM)



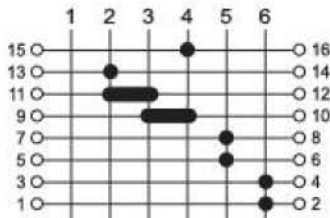
6302 (30° CAM)



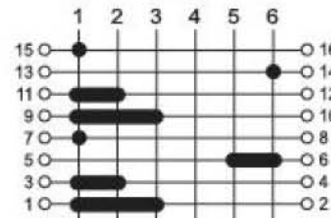
6401 (45° CAM)



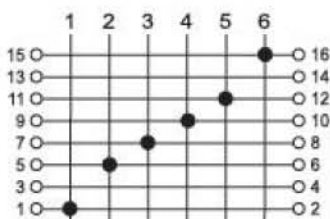
6402 (30° CAM)



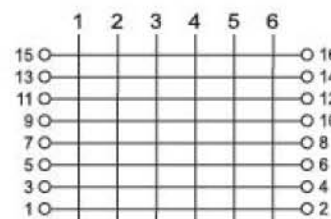
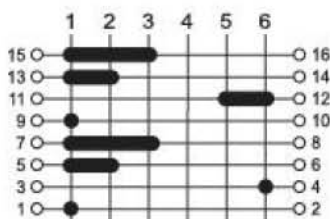
6403 (30° CAM)



6404 (30° CAM)

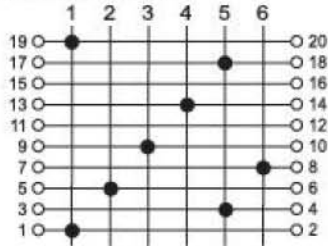


6405 (30° CAM)

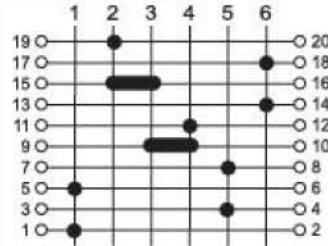


6steps 5stages / 12steps 4stages

6501 (45° CAM)



6502 (45° CAM)



CONTROL COMPONENTS

SQUARE LIGHT

TOWER LIGHT

MICRO SWITCH

FOOT SWITCH

LIMIT SWITCH

POWER SWITCH

HORN SWITCH

CAM SWITCH

BUZZER

PHOTO SENSOR

PROXIMITY SENSOR

FLOAT/LEVEL SWITCH

TIMER & COUNTER

RELAY

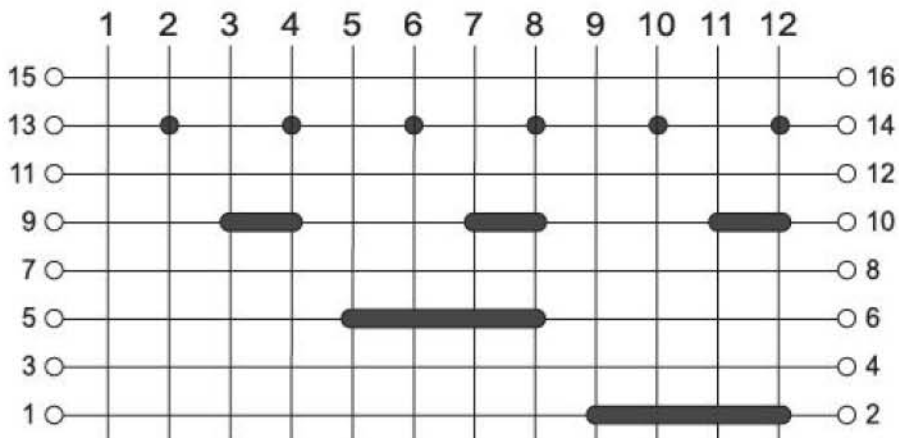
SOCKETS

TERMINAL BLOCK

CONTROL BOX

PID TEMP. CONTROLLER

12401



▼
Creative Passion

Koino[®]

www.koino.com