

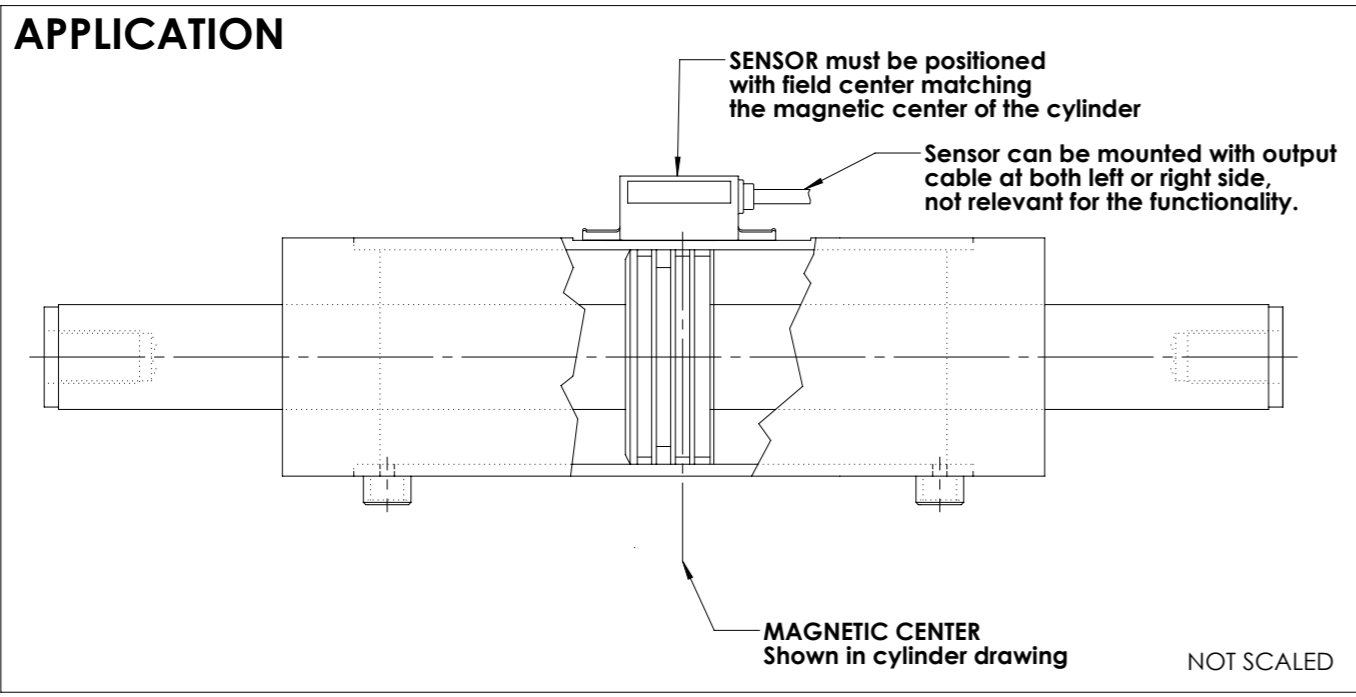
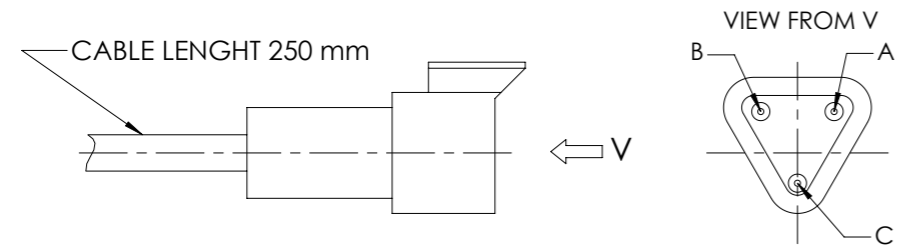
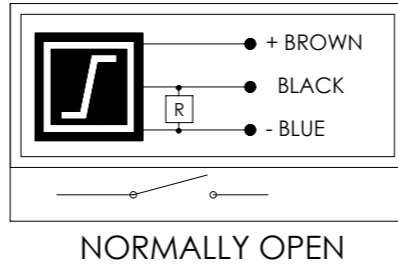
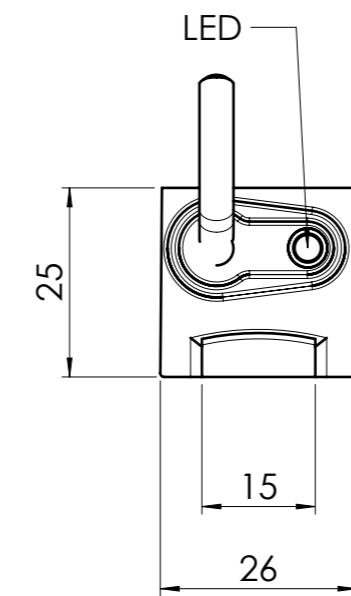
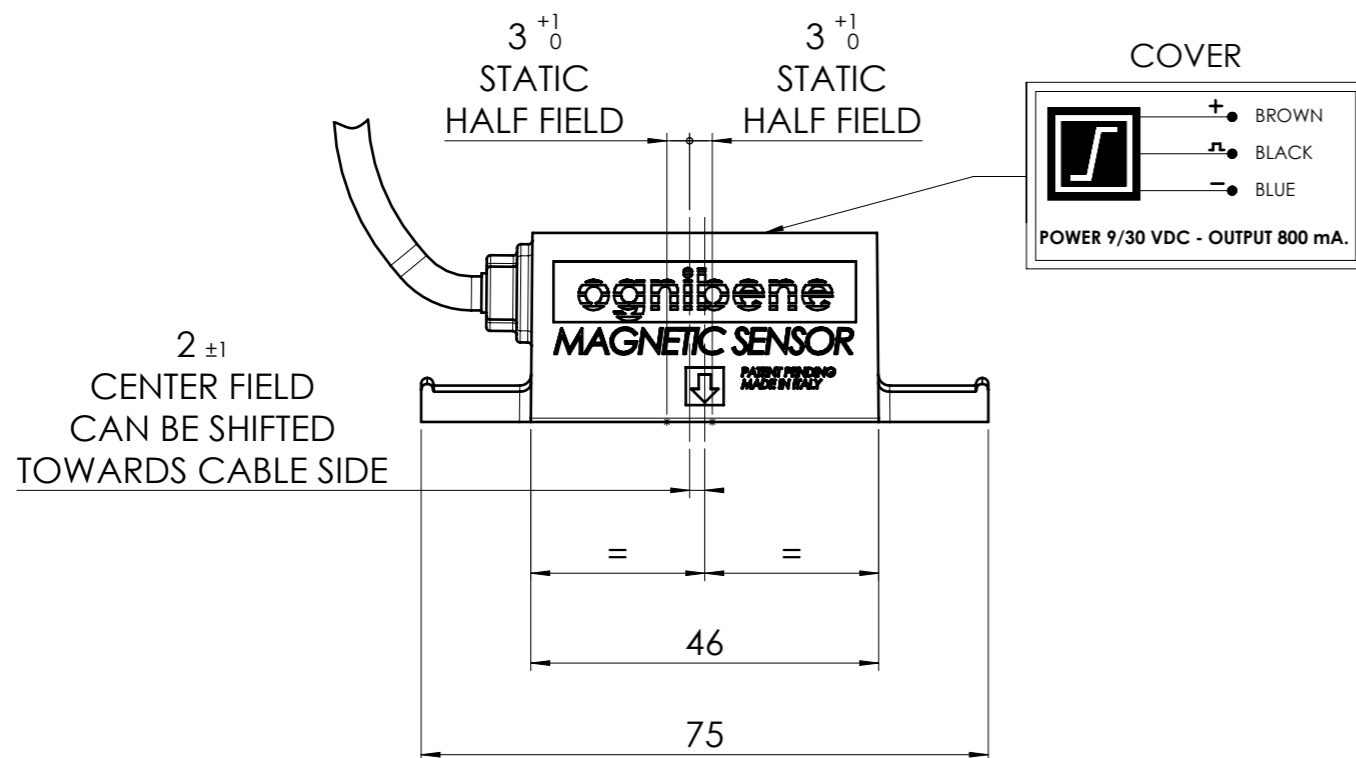
PART NUMBER
483002090

REV.
03

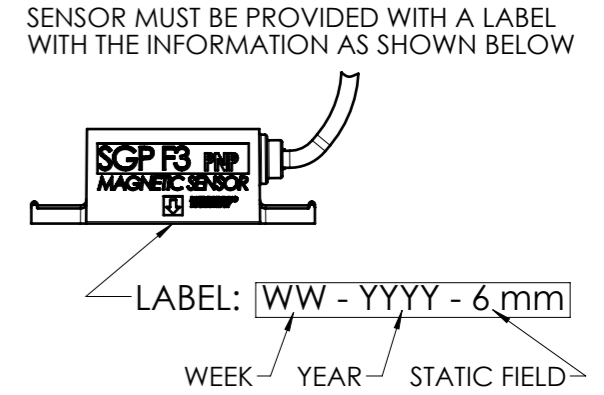
NEL DUBBIO, CHIEDERE!
IF YOU HAVE DOUBTS, ASK!

✉ engineering@ognibene.com

如有疑问，请务必确认！



TECHNICAL DATA				
TEST	DATA	RESULTS		
OPERATIVE TEST	8 V at 70° C 30 V at 70° C 30 V at 90° C	≥ 10 Cycles ≥ 10 Cycles ≥ 10 Cycles		
REVERSE POLARITY	-24 V at 25° C	OK		
SHORT CIRCUIT PROTECTED OUTPUT		OK		
CURRENT ABSORBED Acc. to TEMPERATURE	-18° ÷ +80° C	< 200 mA		
CURRENT ABSORBED Acc. to APPLIED TENSION	0 ÷ 30 V	< 250 mA		
INDUCTIVE LOADS	800 mA CONTINUOUS 1000 mA PEAK			
PROTECTION CLASS	IP65			
COLOR CASE	ORANGE			
OUT	PNP			
SUPPLY VOLTAGE	9 ÷ 30 V (MAX.)			
SWITCH OFF DELAY TIME	250÷350 ms			
OPERATIVE TEMPERATURE RANGE @ 800 mA LOAD	= -30° ÷ +90° C			
STORAGE TEMPERATURE RANGE	= -40° ÷ +100° C			
MAXIMUM PAINTING TEMPERATURE	= +110° C for max 20 minutes			
PROTECTED AGAINST ESD AND FAST TRANSIENT				
REVERSE POLARITY PROTECTED				
<table border="0"> <tr> <td style="border: 1px solid black; padding: 5px;">CE ELECTROMAGNETIC COMPATIBILITY</td> <td style="padding: 5px;"> <ul style="list-style-type: none"> - DMOS OUTLET PORT VERTICAL POWER - PROTECTED FROM OVERLOADING BY MEANS OF FLOW LIMITATION AND TEMPERATURE MEASURING - INTERDEPENDENT PROTECTION FROM RESET BY INLET SIGNAL - MOSFET POWER CHECK AND PROTECTION CIRCUITS POWER SUPPLY DRAWN FROM INPUT - ESD PROTECTION ON ALL PINS </td> </tr> </table>			CE ELECTROMAGNETIC COMPATIBILITY	<ul style="list-style-type: none"> - DMOS OUTLET PORT VERTICAL POWER - PROTECTED FROM OVERLOADING BY MEANS OF FLOW LIMITATION AND TEMPERATURE MEASURING - INTERDEPENDENT PROTECTION FROM RESET BY INLET SIGNAL - MOSFET POWER CHECK AND PROTECTION CIRCUITS POWER SUPPLY DRAWN FROM INPUT - ESD PROTECTION ON ALL PINS
CE ELECTROMAGNETIC COMPATIBILITY	<ul style="list-style-type: none"> - DMOS OUTLET PORT VERTICAL POWER - PROTECTED FROM OVERLOADING BY MEANS OF FLOW LIMITATION AND TEMPERATURE MEASURING - INTERDEPENDENT PROTECTION FROM RESET BY INLET SIGNAL - MOSFET POWER CHECK AND PROTECTION CIRCUITS POWER SUPPLY DRAWN FROM INPUT - ESD PROTECTION ON ALL PINS 			



SHEET 2 OF 2: CUSTOMER DRAWING

16276	03	17W43	RELEASED			R.M.	A.Z.
ECN	REV.	PLCS	DRW DATE	REVISION		SIGN.	APPR.
ognibene power		APPROVED	PROCESS	ENGRG	DESIGN	MATERIAL RELEASED TO:	
		R.F.		A.B.	F.P.	MASS PRODUCTION	
		DENOMINAZIONE					ENG.
		SENSORE MAGNETICO FE PNP N.O.					OPW
		DESCRIPTION					SHEET
		MAGNETIC SENSOR FE PNP N.O.					2
		ISO 128					OF
		SCALE					2
		1:1					REV.
		SIZE					03
		A3					
		PART NUMBER					
		483002090					
		ALL PROPERTY RIGHTS RESERVED BY					
		OGNIBENE POWER spa					
		42124 REGGIO EMILIA (ITALY)					
		TEL. +39 0522 502501 - ✉ engineering@ognibene.com					

METRIC mm 100