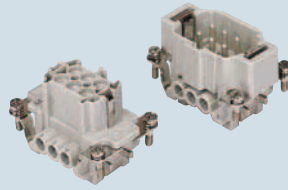


enclosures:
size "44.27" page:

C-TYPE IP65/IP66 240 - 243
 C7 IP67, single lever 274
 V-TYPE IP65/IP66, single lever 280/284 - 286
 BIG hoods 304 - 306
 T-TYPE IP65 insulating 326 - 327
 T-TYPE / W IP66 insulating 336 - 337
 HYGIENIC T-TYPE / H IP66/IP69 350 - 351
 HYGIENIC T-TYPE / C IP66/IP69, -50 °C 358 - 359
 W-TYPE for aggressive environments 373
 EMC 392
 central lever 404 - 405
 IP68 420 - 423
 LS-TYPE 450 - 451

panel supports: page:
COB 462 - 463

inserts,
screw terminal connections



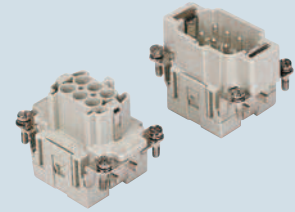
silver plated contacts

part No.

CNEF 06 T
CNEM 06 T

CNEF 06 TX
CNEM 06 TX

inserts,
spring terminal connections



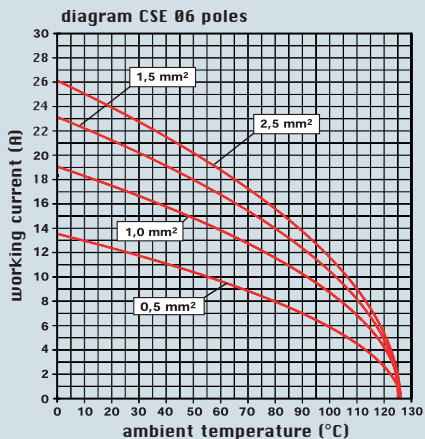
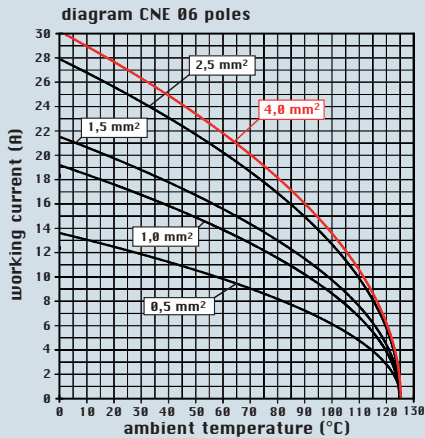
silver plated contacts

part No.

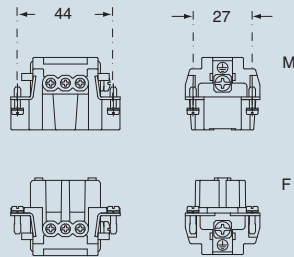
CSEF 06
CSEM 06

description	part No.
indirect, with plate 1) female inserts with female contacts male inserts with male contacts	CNEF 06 T CNEM 06 T
direct, without plate 2) female inserts with female contacts male inserts with male contacts	CNEF 06 TX CNEM 06 TX
spring terminal female inserts with female contacts male inserts with male contacts	CSEF 06 CSEM 06

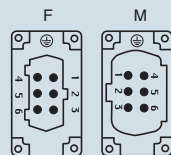
- characteristics according to EN 61984:
16A 500V 6kV 3
16A 400/690V 6kV 2
 - cUL - UL for USA and Canada (CNE), UL (CSE), CSA, CCC *, GL, EAC certified
 * CQC certification being applied for
 - rated voltage according to UL/CSA: 600V
 - insulation resistance: ≥ 10 GΩ
 - ambient temperature limit: -40 °C ... +125 °C
 - are made of self-extinguishing thermoplastic resin UL 94 V0
 - mechanical life: ≥ 500 cycles
 - contact resistance: ≤ 1 mΩ (CNE) - ≤ 3 mΩ (CSE)
 - for maximum current load, see the following load curves inserts, for more information see page 559



dimensions in mm



contacts side (front view)

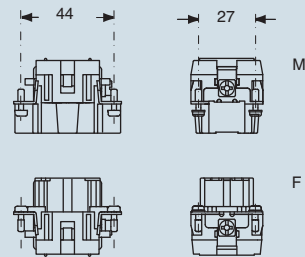


- inserts with plate for section conductors: 0,5 - 4 mm² - AWG 20 - 12
- inserts without plate for section conductors: 0,25 - 2,5 mm² - AWG 24 - 14
- conductors stripping length: 7 mm
- terminal screw torque: 0,5 Nm (4.4 lb.in), for more information see page 34 and 35

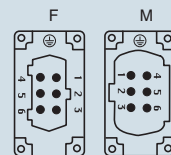
1) for unprepared conductors

2) for bush terminal conductors

dimensions in mm



contacts side (front view)



- inserts for section conductors: 0,14 - 2,5 mm² - AWG 26 - 14
- conductors stripping length: 9...11 mm

connection with spring terminal

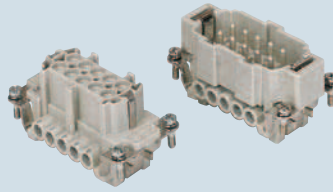
dimensions shown are not binding and may be changed without notice

enclosures:
size "57.27" page:

C-TYPE IP65/IP66 244 - 249
C7 IP67, two levers 275
V-TYPE IP65/IP66, single lever 281/288 - 291
BIG hoods 308 - 311
T-TYPE IP65 insulating 328 - 329
T-TYPE / W IP66 insulating 338 - 339
HYGIENIC T-TYPE / H IP66/IP69 352 - 353
HYGIENIC T-TYPE / C IP66/IP69, -50 °C 360 - 361
W-TYPE for aggressive environments 374
EMC 393
central lever 406 - 407
IP68 424 - 427
LS-TYPE 452 - 453

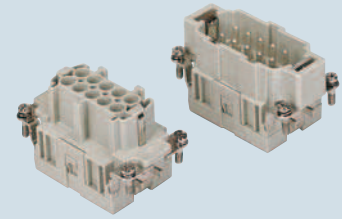
panel supports: page:
COB 462 - 463

inserts,
screw terminal connections



silver plated contacts

inserts,
spring terminal connections

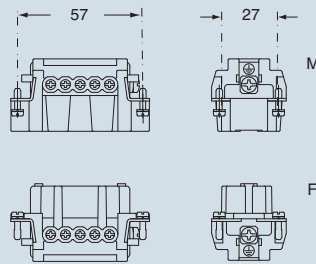


silver plated contacts

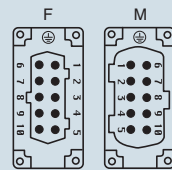
description	part No.	part No.
indirect, with plate 1) female inserts with female contacts male inserts with male contacts	CNEF 10 T CNEM 10 T	
direct, without plate 2) female inserts with female contacts male inserts with male contacts	CNEF 10 TX CNEM 10 TX	
spring terminal female inserts with female contacts male inserts with male contacts		CSEF 10 CSEM 10

- characteristics according to EN 61984:
16A 500V 6kV 3
16A 400/690V 6kV 2
- cUL - UL for USA and Canada (CNE), UL (CSE), CSA, CCC *, GL, EAC certified
- * CQC certification being applied for
- rated voltage according to UL/CSA: 600V
- insulation resistance: $\geq 10 \text{ G}\Omega$
- ambient temperature limit: $-40 \text{ }^\circ\text{C} \dots +125 \text{ }^\circ\text{C}$
- are made of self-extinguishing thermoplastic resin UL 94 V0
- mechanical life: ≥ 500 cycles
- contact resistance: $\leq 1 \text{ m}\Omega$ (CNE) - $\leq 3 \text{ m}\Omega$ (CSE)
- for maximum current load, see the following load curves inserts, for more information see page 559

dimensions in mm

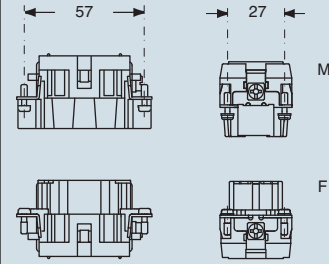


contacts side (front view)

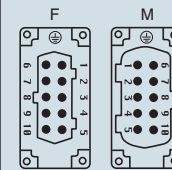


- inserts with plate for section conductors:
0,5 - 4 mm² - AWG 20 - 12
- inserts without plate for section conductors:
0,25 - 2,5 mm² - AWG 24 - 14
- conductors stripping length: 7 mm
- terminal screw torque: 0,5 Nm (4.4 lb.in), for more information see page 34 and 35

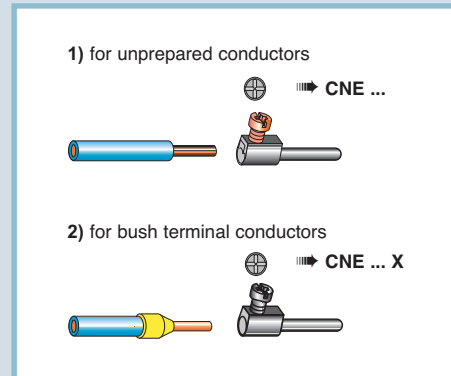
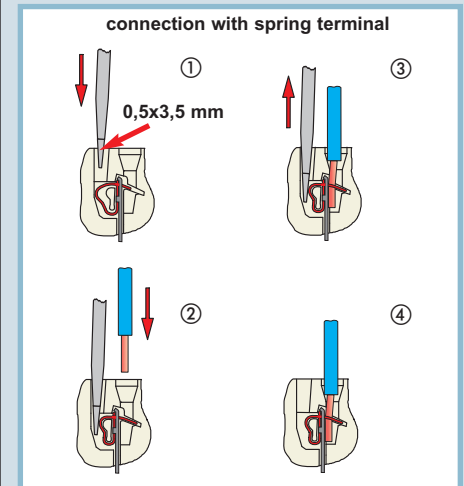
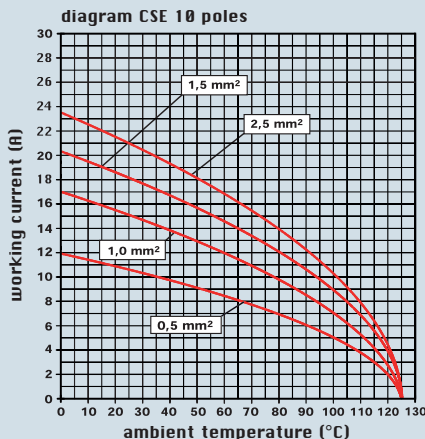
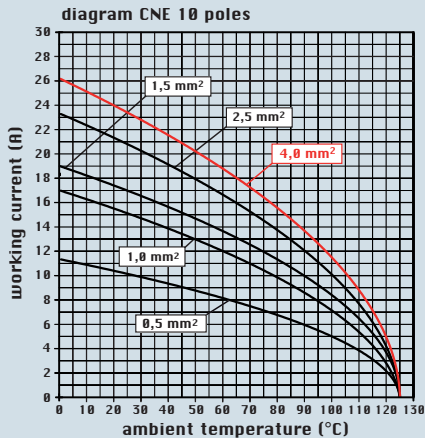
dimensions in mm



contacts side (front view)



- inserts for section conductors:
0,14 - 2,5 mm² - AWG 26 - 14
- conductors stripping length: 9...11 mm



dimensions shown are not binding and may be changed without notice

enclosures:
size "77.27" page:

C-TYPE IP65/IP66 250 - 256
 C7 IP67, two levers 276
 V-TYPE IP65/IP66, single lever 282/292 - 295
 BIG hoods 312 - 315
 T-TYPE IP65 insulating 330 - 331
 T-TYPE / W IP66 insulating 340 - 341
 HYGIENIC T-TYPE / H IP66/IP69 354 - 355
 HYGIENIC T-TYPE / C IP66/IP69, -50 °C 362 - 363
 W-TYPE for aggressive environments 375
 EMC 394
 central lever 408 - 409
 IP68 428 - 431
 LS-TYPE 454 - 455

panel supports: page:
COB 462 - 463

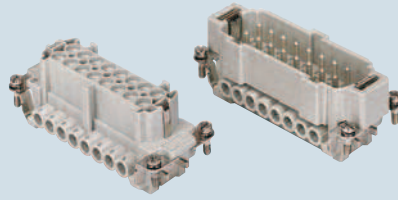
description

indirect, with plate 1)
female inserts with female contacts
male inserts with male contacts

direct, without plate 2)
female inserts with female contacts
male inserts with male contacts

spring terminal
female inserts with female contacts
male inserts with male contacts

inserts,
screw terminal connections



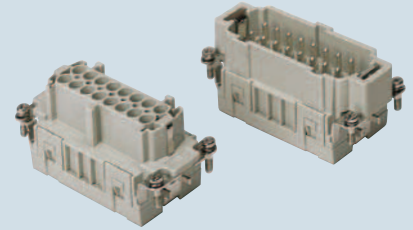
silver plated contacts

part No.

CNEF 16 T
CNEM 16 T

CNEF 16 TX
CNEM 16 TX

inserts,
spring terminal connections



silver plated contacts

part No.

CSEF 16
CSEM 16

- characteristics according to EN 61984:
16A 500V 6kV 3
16A 400/690V 6kV 2
- cUL - UL for USA and Canada (CNE), UL (CSE), CSA, CCC *, GL, EAC certified
- * CQC certification being applied for
- rated voltage according to UL/CSA: 600V
- insulation resistance: $\geq 10 \text{ G}\Omega$
- ambient temperature limit: $-40 \text{ }^\circ\text{C} \dots +125 \text{ }^\circ\text{C}$
- are made of self-extinguishing thermoplastic resin UL 94 V0
- mechanical life: ≥ 500 cycles
- contact resistance: $\leq 1 \text{ m}\Omega$ (CNE) - $\leq 3 \text{ m}\Omega$ (CSE)
- for maximum current load, see the following load curves inserts, for more information see page 559

diagram CNE 16 poles

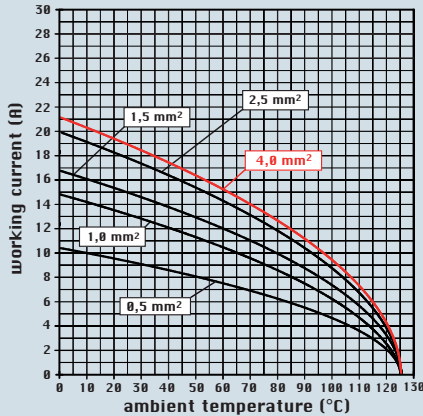
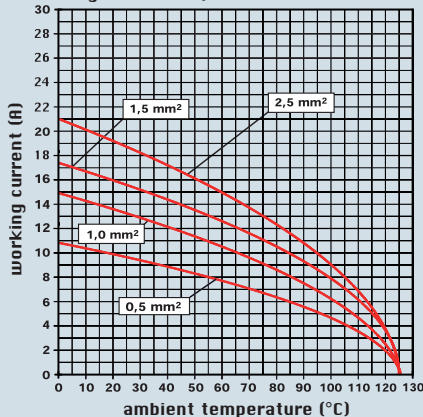
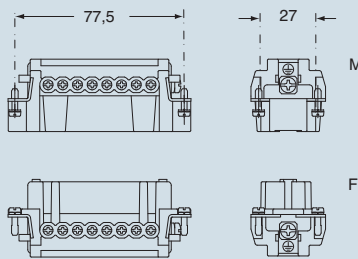


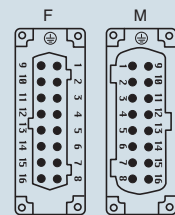
diagram CSE 16 poles



dimensions in mm

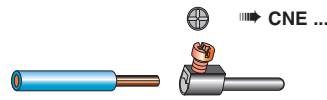


contacts side (front view)

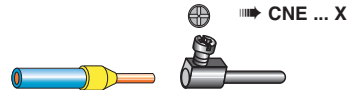


- inserts with plate for section conductors:
0,5 - 4 mm² - AWG 20 - 12
- inserts without plate for section conductors:
0,25 - 2,5 mm² - AWG 24 - 14
- conductors stripping length: 7 mm
- terminal screw torque: 0,5 Nm (4.4 lb.in), for more information see page 34 and 35

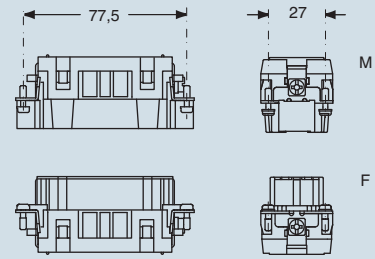
1) for unprepared conductors



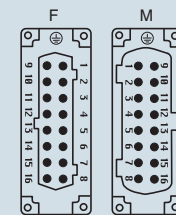
2) for bush terminal conductors



dimensions in mm

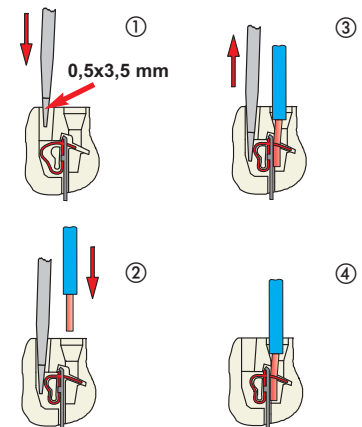


contacts side (front view)



- inserts for section conductors:
0,14 - 2,5 mm² - AWG 26 - 14
- conductors stripping length: 9...11 mm

connection with spring terminal



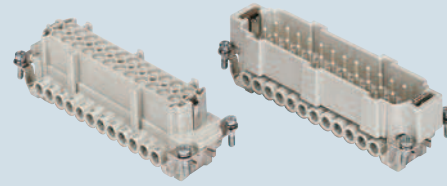
dimensions shown are not binding and may be changed without notice

enclosures:
size "104.27" page:

C-TYPE IP65/IP66 258 - 266
C7 IP67, two levers 277
V-TYPE IP65/IP66, single lever 283/296 - 299
BIG hoods 316 - 319
T-TYPE IP65 insulating 332 - 333
T-TYPE / W IP66 insulating 342 - 343
HYGIENIC T-TYPE / H IP66/IP69 356 - 357
HYGIENIC T-TYPE / C IP66/IP69, -50 °C 364 - 365
W-TYPE for aggressive environments 376
EMC 395
central lever 410 - 412
IP68 432 - 435
LS-TYPE 456 - 457

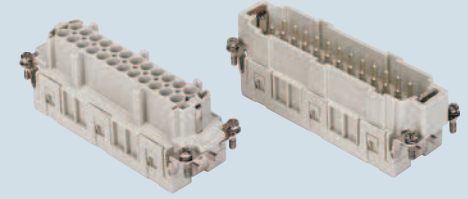
panel supports: page:
COB 462 - 463

inserts,
screw terminal connections



silver plated contacts

inserts,
spring terminal connections



silver plated contacts

description	part No.	part No.
indirect, with plate 1) female inserts with female contacts male inserts with male contacts	CNEF 24 T CNEM 24 T	
direct, without plate 2) female inserts with female contacts male inserts with male contacts	CNEF 24 TX CNEM 24 TX	
spring terminal female inserts with female contacts male inserts with male contacts		CSEF 24 CSEM 24

- characteristics according to EN 61984:
16A 500V 6kV 3
16A 400/690V 6kV 2
- cUL - UL for USA and Canada (CNE), UL (CSE), CSA, CCC *, GL, EAC certified
- * CQC certification being applied for
- rated voltage according to UL/CSA: 600V
- insulation resistance: $\geq 10 \text{ G}\Omega$
- ambient temperature limit: $-40 \text{ }^\circ\text{C} \dots +125 \text{ }^\circ\text{C}$
- are made of self-extinguishing thermoplastic resin UL 94 V0
- mechanical life: ≥ 500 cycles
- contact resistance: $\leq 1 \text{ m}\Omega$ (CNE) - $\leq 3 \text{ m}\Omega$ (CSE)
- for maximum current load, see the following load curves inserts, for more information see page 559

diagram CNE 24 poles

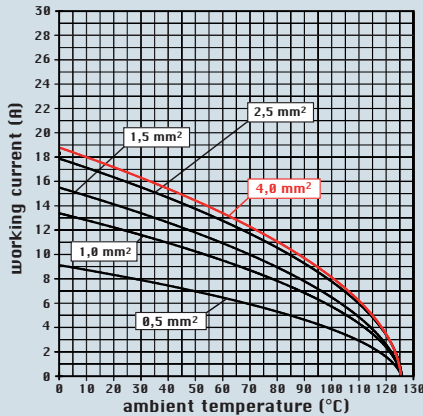
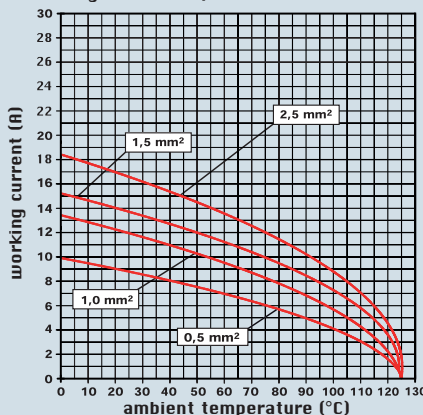
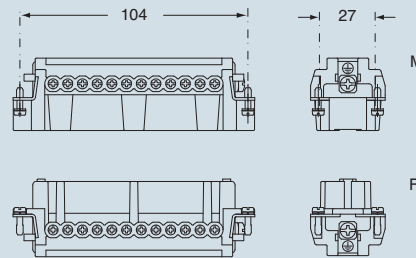


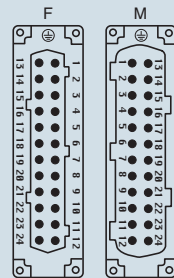
diagram CSE 24 poles



dimensions in mm



contacts side (front view)

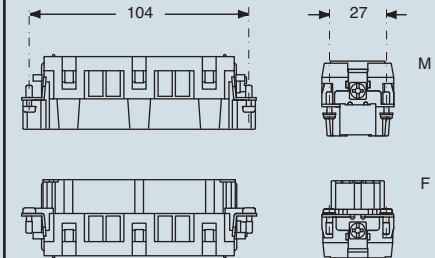


- inserts with plate for section conductors:
0,5 - 4 mm² - AWG 20 - 12
- inserts without plate for section conductors:
0,25 - 2,5 mm² - AWG 24 - 14
- conductors stripping length: 7 mm
- terminal screw torque: 0,5 Nm (4.4 lb.in), for more information see page 34 and 35

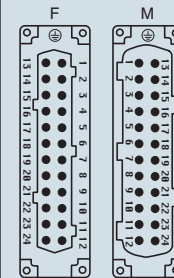
1) for unprepared conductors

2) for bush terminal conductors

dimensions in mm



contacts side (front view)



- inserts for section conductors:
0,14 - 2,5 mm² - AWG 26 - 14
- conductors stripping length: 9...11 mm

connection with spring terminal

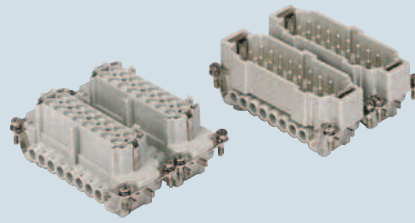
dimensions shown are not binding and may be changed without notice

enclosures:
size "77.62"

page:

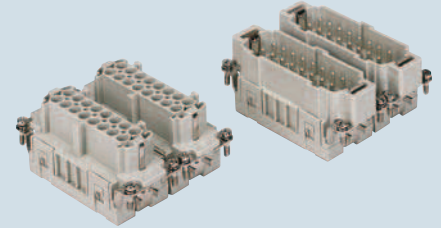
C-TYPE IP65/IP66 267 - 270
W-TYPE for aggressive environments 377

inserts,
screw terminal connections



silver plated contacts

inserts,
spring terminal connections



silver plated contacts

description	part No.	part No.	part No.	part No.
indirect, with plate 1) female inserts, No. (1-16) and (17-32) male inserts, No. (1-16) and (17-32)	CNEF 16 T CNEM 16 T	CNEF 16 TN CNEM 16 TN		
direct, without plate 2) female inserts, No. (1-16) and (17-32) male inserts, No. (1-16) and (17-32)	CNEF 16 TX CNEM 16 TX	CNEF 16 TXN CNEM 16 TXN		
spring terminal female inserts, No. (1-16) and (17-32) male inserts, No. (1-16) and (17-32)			CSEF 16 CSEM 16	CSEF 16 N CSEM 16 N

- characteristics according to EN 61984:
16A 500V 6kV 3
16A 400/690V 6kV 2
- cUL - UL for USA and Canada (CNE), UL (CSE), CSA, CCC *, GL, EAC certified
- * CQC certification being applied for
- rated voltage according to UL/CSA: 600V
- insulation resistance: $\geq 10 \text{ G}\Omega$
- ambient temperature limit: $-40 \text{ }^\circ\text{C} \dots +125 \text{ }^\circ\text{C}$
- are made of self-extinguishing thermoplastic resin UL 94 V0
- mechanical life: ≥ 500 cycles
- contact resistance: $\leq 1 \text{ m}\Omega$ (CNE) - $\leq 3 \text{ m}\Omega$ (CSE)
- for maximum current load, see the following load curves inserts, for more information see page 559

diagram CNE 32 poles

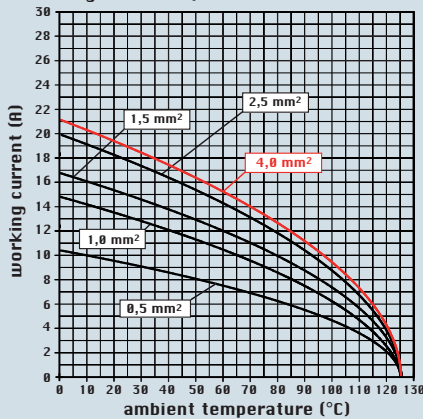
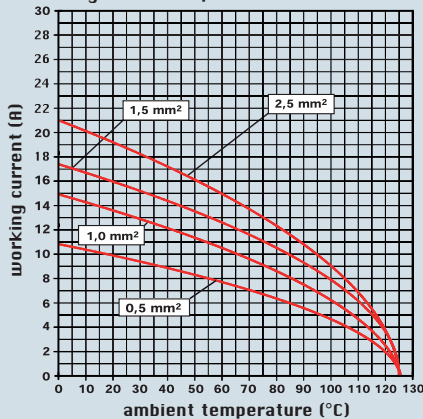
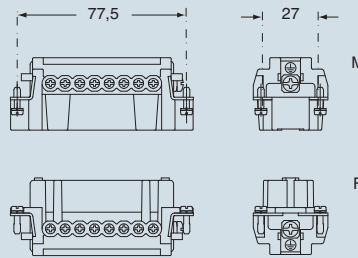


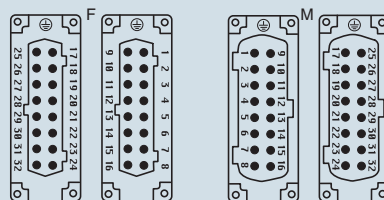
diagram CSE 32 poles



dimensions in mm



contacts side (front view)

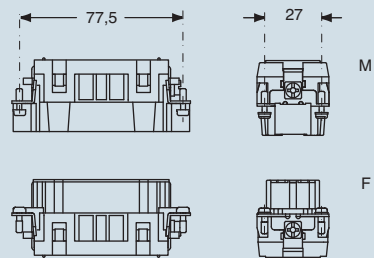


- inserts with plate for section conductors:
0,5 - 4 mm² - AWG 20 - 12
- inserts without plate for section conductors:
0,25 - 2,5 mm² - AWG 24 - 14
- conductors stripping length: 7 mm
- terminal screw torque: 0,5 Nm (4.4 lb.in), for more information see page 34 and 35

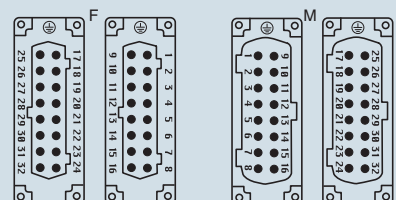
1) for unprepared conductors

2) for bush terminal conductors

dimensions in mm



contacts side (front view)



- inserts for section conductors:
0,14 - 2,5 mm² - AWG 26 - 14
- conductors stripping length: 9...11 mm

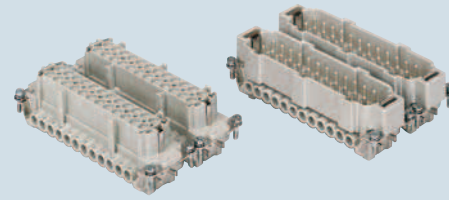
connection with spring terminal

dimensions shown are not binding and may be changed without notice

enclosures:
size "104.62" page:

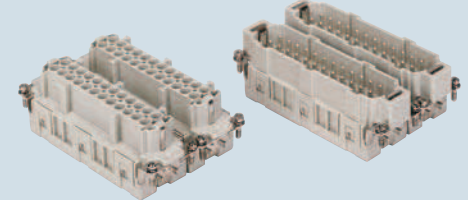
C-TYPE IP65/IP66..... 271
W-TYPE for aggressive environments 378

inserts,
screw terminal connections



silver plated contacts

inserts,
spring terminal connections



silver plated contacts

description	part No.	part No.	part No.	part No.
indirect, with plate 1) female inserts, No. (1-24) and (25-48) male inserts, No. (1-24) and (25-48)	CNEF 24 T CNEM 24 T	CNEF 24 TN CNEM 24 TN		
direct, without plate 2) female inserts, No. (1-24) and (25-48) male inserts, No. (1-24) and (25-48)	CNEF 24 TX CNEM 24 TX	CNEF 24 TXN CNEM 24 TXN		
spring terminal female inserts, No. (1-24) and (25-48) male inserts, No. (1-24) and (25-48)			CSEF 24 CSEM 24	CSEF 24 N CSEM 24 N

- characteristics according to EN 61984:
16A 500V 6kV 3
16A 400/690V 6kV 2
- cUL - UL for USA and Canada (CNE), UL (CSE), CSA, CCC *, GL, EAC certified
- * CQC certification being applied for
- rated voltage according to UL/CSA: 600V
- insulation resistance: $\geq 10 \text{ G}\Omega$
- ambient temperature limit: $-40 \text{ }^\circ\text{C} \dots +125 \text{ }^\circ\text{C}$
- are made of self-extinguishing thermoplastic resin UL 94 V0
- mechanical life: ≥ 500 cycles
- contact resistance: $\leq 1 \text{ m}\Omega$ (CNE) - $\leq 3 \text{ m}\Omega$ (CSE)
- for maximum current load, see the following load curves inserts, for more information see page 559

diagram CNE 48 poles

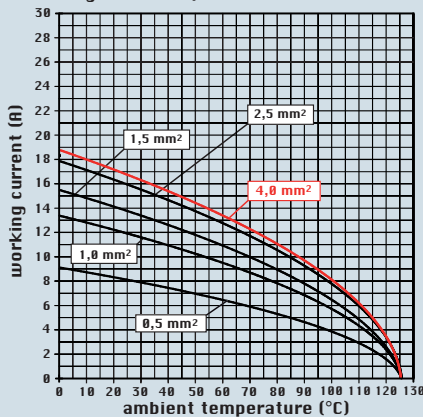
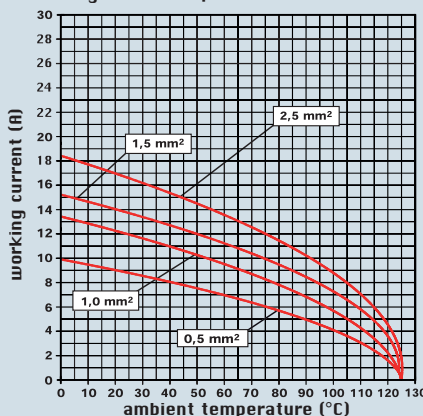
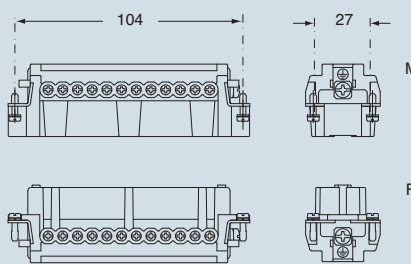


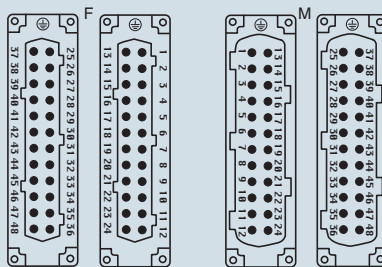
diagram CSE 48 poles



dimensions in mm



contacts side (front view)

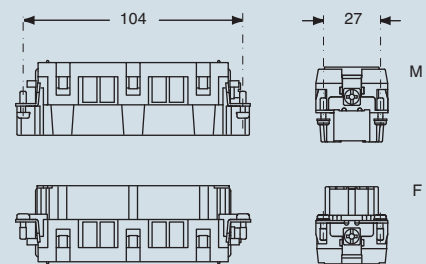


- inserts with plate for section conductors:
0,5 - 4 mm² - AWG 20 - 12
- inserts without plate for section conductors:
0,25 - 2,5 mm² - AWG 24 - 14
- conductors stripping length: 7 mm
- terminal screw torque: 0,5 Nm (4.4 lb.in), for more information see page 34 and 35

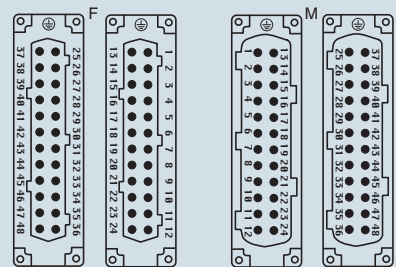
1) for unprepared conductors

2) for bush terminal conductors

dimensions in mm



contacts side (front view)



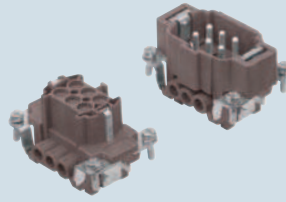
- inserts for section conductors:
0,14 - 2,5 mm² - AWG 26 - 14
- conductors stripping length: 9...11 mm

connection with spring terminal

dimensions shown are not binding and may be changed without notice

enclosures:
 size "44.27" page:
 for 180 °C 398

inserts,
 screw terminal connections



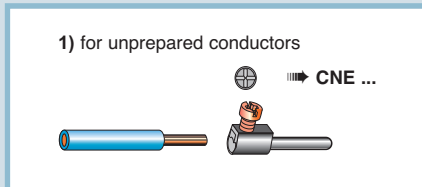
silver
 plated
 contacts

description

part No.

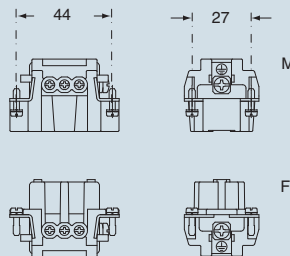
indirect, with plate 1), use in up to 180 °C
 female inserts with female contacts, brown
 male inserts with male contacts, brown

CNEF 06 RY
 CNEM 06 RY

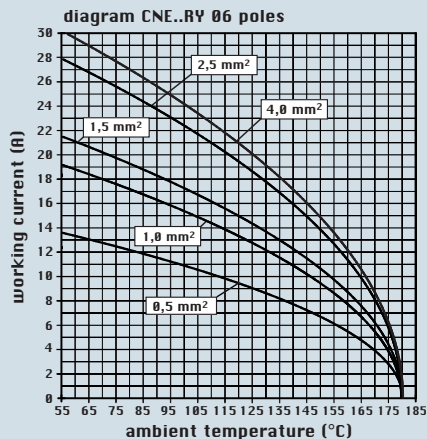
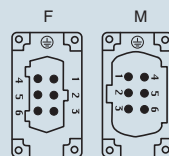


- characteristics according to EN 61984:
16A 500V 6kV 3
16A 400/690V 6kV 2
- cUL - UL for USA and Canada, CSA, CCC *, GL, EAC certified; * CQC certification being applied for
- rated voltage according to UL/CSA: 600V
- insulation resistance: $\geq 10 \text{ G}\Omega$
- ambient temperature limit: -40 °C ... +180 °C
- are made of self-extinguishing thermoplastic resin UL 94 V0
- mechanical life: ≥ 250 cycles
- contact resistance: $\leq 1 \text{ m}\Omega$
- for maximum current load, see the following load curves inserts, for more information see page 560

dimensions in mm



contacts side (front view)

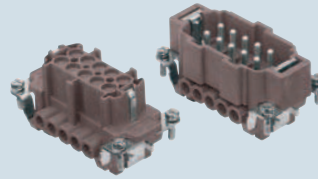


- inserts with plate for section conductors:
 0,5 - 4 mm² - AWG 20 - 12
- conductors stripping length: 7 mm
- terminal screw torque: 0,5 Nm (4,4 lb.in), for more information see page 34 and 35

dimensions shown are not binding
 and may be changed without notice

enclosures:
 size "57.27" page:
 for 180 °C 399

**inserts,
 screw terminal connections**



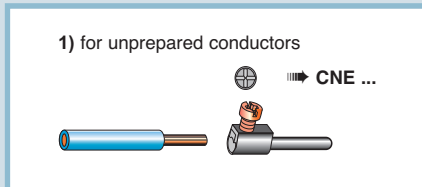
silver
 plated
 contacts

description

part No.

indirect, with plate 1), use in up to 180 °C
 female inserts with female contacts, brown
 male inserts with male contacts, brown

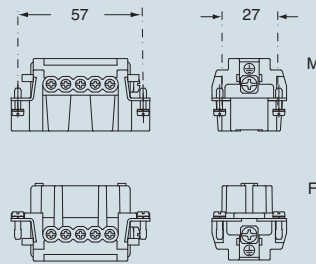
**CNEF 10 RY
 CNEM 10 RY**



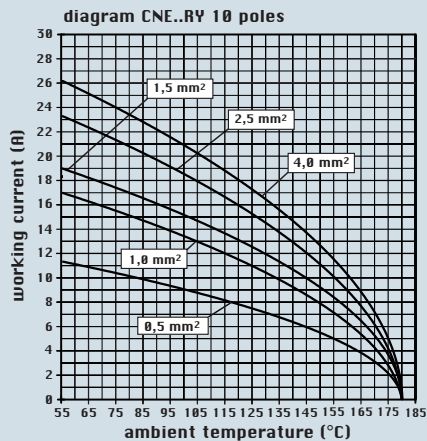
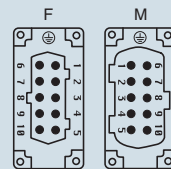
- characteristics according to EN 61984:

- 16A 500V 6kV 3**
- 16A 400/690V 6kV 2**
- cUL - UL for USA and Canada, CSA, CCC *, GL, EAC certified; * CQC certification being applied for
- rated voltage according to UL/CSA: 600V
- insulation resistance: $\geq 10 \text{ G}\Omega$
- ambient temperature limit: -40 °C ... +180 °C
- are made of self-extinguishing thermoplastic resin UL 94 V0
- mechanical life: ≥ 250 cycles
- contact resistance: $\leq 1 \text{ m}\Omega$
- for maximum current load, see the following load curves inserts, for more information see page 560

dimensions in mm



contacts side (front view)

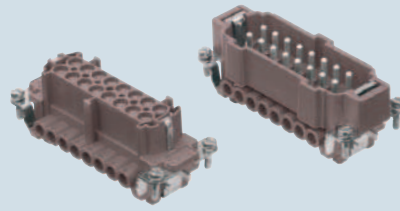


- inserts with plate for section conductors:
 0,5 - 4 mm² - AWG 20 - 12
- conductors stripping length: 7 mm
- terminal screw torque: 0,5 Nm (4,4 lb.in), for more information see page 34 and 35

dimensions shown are not binding
 and may be changed without notice

enclosures:
 size "77.27" page:
 for 180 °C 400

inserts,
 screw terminal connections



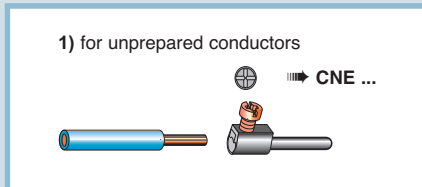
silver
 plated
 contacts

description

part No.

indirect, with plate 1), use in up to 180 °C
 female inserts with female contacts, brown
 male inserts with male contacts, brown

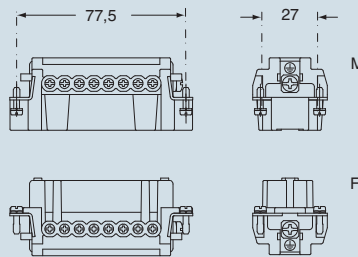
CNEF 16 RY
 CNEM 16 RY



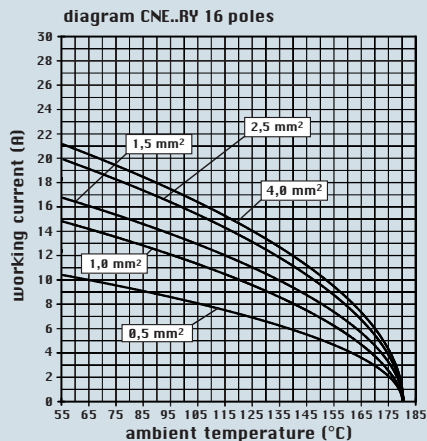
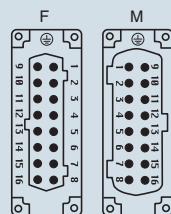
- characteristics according to EN 61984:

- 16A 500V 6kV 3**
- 16A 400/690V 6kV 2**
- cUL - UL for USA and Canada, CSA, CCC *, GL, EAC certified; * CQC certification being applied for
- rated voltage according to UL/CSA: 600V
- insulation resistance: $\geq 10 \text{ G}\Omega$
- ambient temperature limit: -40 °C ... +180 °C
- are made of self-extinguishing thermoplastic resin UL 94 V0
- mechanical life: ≥ 250 cycles
- contact resistance: $\leq 1 \text{ m}\Omega$
- for maximum current load, see the following load curves inserts, for more information see page 560

dimensions in mm



contacts side (front view)

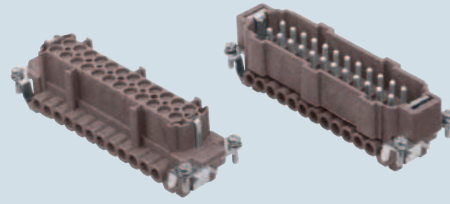


- inserts with plate for section conductors:
 0,5 - 4 mm² - AWG 20 - 12
- conductors stripping length: 7 mm
- terminal screw torque: 0,5 Nm (4,4 lb.in), for more information see page 34 and 35

dimensions shown are not binding
 and may be changed without notice

enclosures:
 size "104.27" page:
 for 180 °C 401

inserts,
 screw terminal connections



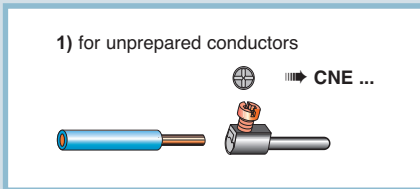
silver plated contacts

description

part No.

indirect, with plate 1), use in up to 180 °C
 female inserts with female contacts, brown
 male inserts with male contacts, brown

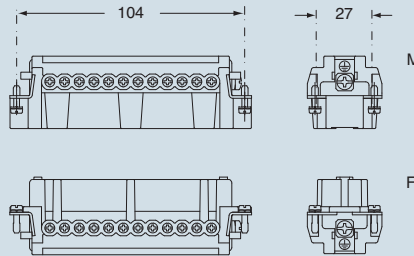
CNEF 24 RY
 CNEM 24 RY



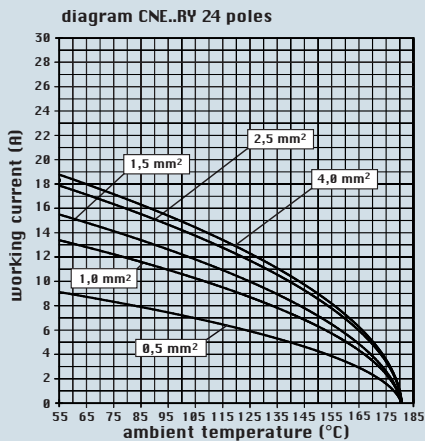
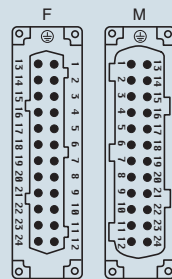
- characteristics according to EN 61984:

- 16A 500V 6kV 3**
- 16A 400/690V 6kV 2**
- cUL - UL for USA and Canada, CSA, CCC *, GL, EAC certified; * CQC certification being applied for
- rated voltage according to UL/CSA: 600V
- insulation resistance: $\geq 10 \text{ G}\Omega$
- ambient temperature limit: -40 °C ... +180 °C
- are made of self-extinguishing thermoplastic resin UL 94 V0
- mechanical life: ≥ 250 cycles
- contact resistance: $\leq 1 \text{ m}\Omega$
- for maximum current load, see the following load curves inserts, for more information see page 560

dimensions in mm



contacts side (front view)

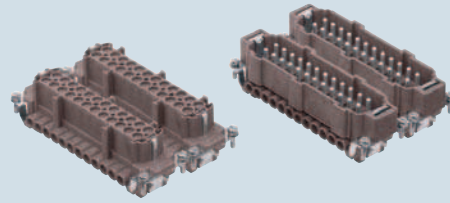


- inserts with plate for section conductors:
 0,5 - 4 mm² - AWG 20 - 12
- conductors stripping length: 7 mm
- terminal screw torque: 0,5 Nm (4,4 lb.in), for more information see page 34 and 35

dimensions shown are not binding
 and may be changed without notice

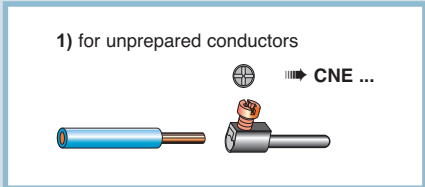
enclosures:
 size "104.62" page:
 for 180 °C 402

**inserts,
 screw terminal connections**



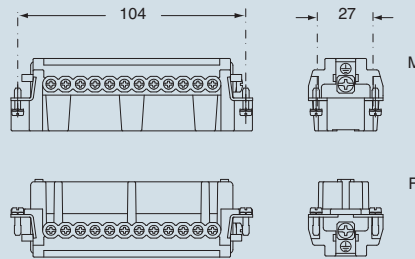
silver plated contacts

description	part No.	part No.
indirect, with plate 1), use in temperatures up to 180 °C female inserts, No.(1-24) and (25-48), brown male inserts, No. (1-24) and (25-48), brown	CNEF 24 RY CNEM 24 RY	CNEF 24 RYN CNEM 24 RYN

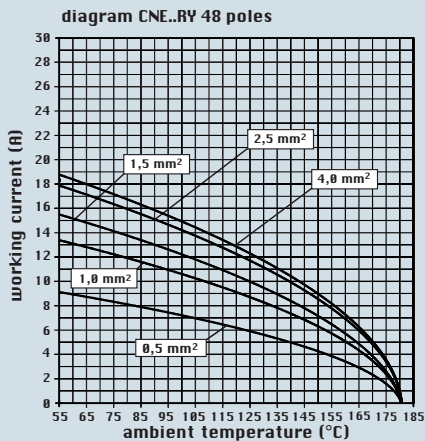
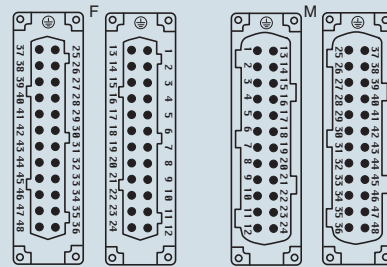


- characteristics according to EN 61984:
16A 500V 6kV 3
16A 400/690V 6kV 2
- cUL - UL for USA and Canada, CSA, CCC *, GL, EAC certified; * CQC certification being applied for
- rated voltage according to UL/CSA: 600V
- insulation resistance: ≥ 10 GΩ
- ambient temperature limit: -40 °C ... +180 °C
- are made of self-extinguishing thermoplastic resin UL 94 V0
- mechanical life: ≥ 250 cycles
- contact resistance: ≤ 1 mΩ
- for maximum current load, see the following load curves inserts, for more information see page 560

dimensions in mm



contacts side (front view)



- inserts with plate for section conductors:
 0,5 - 4 mm² - AWG 20 - 12
- conductors stripping length: 7 mm
- terminal screw torque: 0,5 Nm (4,4 lb.in), for more information see page 34 and 35

dimensions shown are not binding and may be changed without notice