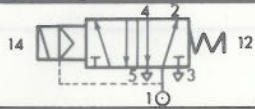


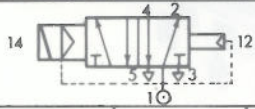
RANGE SPECIFICATION

MONOSTABLE VALVE



1 : Pressure
4,2 : Outlets
5,3 : Exhausts
12 : Return
14 : Pilot

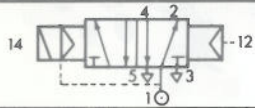
Pilot operators		Subbase Ø BSP	KV*	CV	Pressure in valve in bars		Pilot Pressure		Manual override	REFERENCE NUMBERS				Valve alone** without solenoid	
Pilot	Return				min.	max.	min.	max.		Pilot 222		Pilot 226			
Solenoid/air	Spring	6	G1/4	12	0,84	0	12	2,5	10	⊖	541 00 310	541 00 311	541 00 316	541 00 317	541 90 017
										⊞	541 00 312	541 00 313	541 00 318	541 00 319	
		⊕	541 00 314	541 00 315	541 00 320					541 00 321					
		⊖	541 00 394	541 00 395	541 00 400					541 00 401					
		⊞	541 00 396	541 00 397	541 00 402					541 00 403					
		⊕	541 00 398	541 00 399	541 00 404					541 00 405					
6	G3/8 G1/2	29 31	2,03 2,17	0	12	2,5	10	⊖	541 00 322	541 00 323	541 00 328	541 00 329	541 90 018		
								⊞	541 00 324	541 00 325	541 00 330	541 00 331			
⊕	541 00 326	541 00 327	541 00 332					541 00 333							
⊖	541 00 406	541 00 407	541 00 412					541 00 413							
⊞	541 00 408	541 00 409	541 00 414					541 00 415							
⊕	541 00 410	541 00 411	541 00 416					541 00 417							



1 : Pressure
4,2 : Outlets
5,3 : Exhausts
12 : Return
14 : Pilot

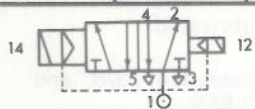
Solenoid/air	Differential	6	G1/4	12	0,84	0	12	2	10	⊖	541 00 322	541 00 323	541 00 328	541 00 329	541 90 018
										⊞	541 00 324	541 00 325	541 00 330	541 00 331	
		⊕	541 00 326	541 00 327	541 00 332					541 00 333					
		⊖	541 00 406	541 00 407	541 00 412					541 00 413					
		⊞	541 00 408	541 00 409	541 00 414					541 00 415					
		⊕	541 00 410	541 00 411	541 00 416					541 00 417					

BISTABLE VALVE



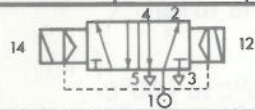
1 : Pressure
4,2 : Outlets
5,3 : Exhausts
12 : Return
14 : Pilot

Solenoid/air	Air	6	G1/4	12	0,84	0	12	1,5	10	⊖	541 00 334	541 00 335	541 00 340	541 00 341	541 90 019
										⊞	541 00 336	541 00 337	541 00 342	541 00 343	
		⊕	541 00 338	541 00 339	541 00 344					541 00 345					
		⊖	541 00 418	541 00 419	541 00 424					541 00 425					
		⊞	541 00 420	541 00 421	541 00 426					541 00 427					
		⊕	541 00 422	541 00 423	541 00 428					541 00 429					



1 : Pressure
4,2 : Outlets
5,3 : Exhausts
12 : Return
14 : Pilot

Solenoid/air	Solenoid/differential	6	G1/4	12	0,84	0	12	2	10	⊖	541 00 346	541 00 347	541 00 352	541 00 353	541 90 020
										⊞	541 00 348	541 00 349	541 00 354	541 00 355	
		⊕	541 00 350	541 00 351	541 00 356					541 00 357					
		⊖	541 00 430	541 00 431	541 00 436					541 00 437					
		⊞	541 00 432	541 00 433	541 00 438					541 00 439					
		⊕	541 00 434	541 00 435	541 00 440					541 00 441					



1 : Pressure
4,2 : Outlets
5,3 : Exhausts
12 : Return
14 : Pilot

Solenoid/air	Solenoid/air	6	G1/4	12	0,84	0	12	1,5	10	⊖	541 00 358	541 00 359	541 00 364	541 00 365	541 90 021
										⊞	541 00 360	541 00 361	541 00 366	541 00 367	
		⊕	541 00 362	541 00 363	541 00 368					541 00 369					
		⊖	541 00 442	541 00 443	541 00 448					541 00 449					
		⊞	541 00 444	541 00 445	541 00 450					541 00 451					
		⊕	541 00 446	541 00 447	541 00 452					541 00 453					

* KV in litres (water) per min Δp 1 bar.

** Valve supplied with seal to fit solenoid.

NOTE : valve can be changed to other functions (see page 5).