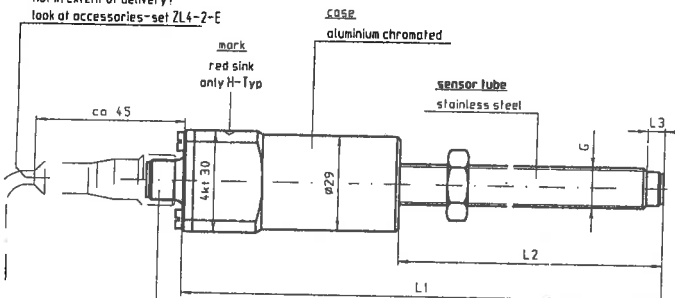
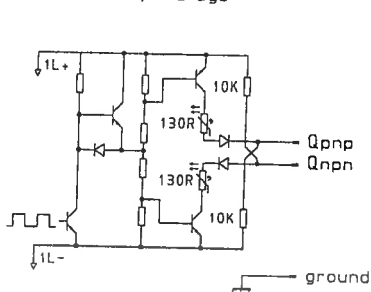


cable with bushing-connector
PUR 2m, 5m, 7,5m, 10m
not in extent of delivery!
look at accessories-set ZL4-2-E

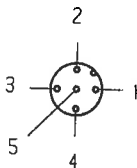


pin connector
according to EURO M12x1
5 pin

block diagram
output stage



connection arrangement



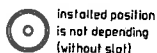
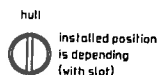
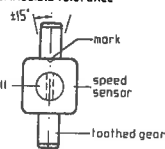
connector cable

1: L+	-	BN	(brown)
2: Q _{ppn}	-	WH	(white)
3: L-	-	BU	(blue)
4: Q _{npn}	-	BK	(black)
5: ground	-	GY	(grey)

installed position

H-Type

permissible tolerance



description

operating voltage: 10V - 32V DC / harmonic content max 5%
operating current: 15mA / switching current (max 50mA)
polarization: integrated
scanned object: moved ferro-magnetic materials
toothed gear module > m2,
drilled hole, grooves > $\varnothing 0,4 \text{ mm}$ t > 4mm
frequency: H-Type 0,1Hz to 20kHz
J-Type 10Hz to 10kHz
with best installation conditions > 15kHz possible
depends on module and clearance
ambient temperature: sensor head -25°C...100°C
measuring tip -25°C...145°C
C DIN 40040
storage temperature: humidity:
vibration resistance: acceleration 4g at 25Hz - 100Hz
amplitude 1,6mm at 2Hz - 25Hz
installed position: H-Type mark rightangled to helix anget
J-Type, without restriction
enclosure: IP 65 (only with screwed connection)
weight: about 200g (depends on the length)
licence: CE, GL, LR,

additional descriptions INFO483, -484

Protection devices ! Insulation test > 35V inadmissible, or only 500V/max 50μA

for othersized screw thread and length please ask for

Item code	thread-size G	overall length L1	tube length L2	tube lug L3
FA2J-1E-70	M12x1	138 mm	70 mm	3 mm
FA2H-3E-70	M16x1,5	138 mm	70 mm	3 mm
FA2J1-2E-115	M12x1,25	183 mm	115 mm	15 mm
FA2J-2E-65	M12x1,25	133 mm	65 mm	4 mm

parts list No	tolerances	surface	scale	1	10mm	weight
up to 50	± 0,1	ON ISO 1302				
above 50	± 0,2					
above 100	± 0,3					

date	name	designation
drawn 27.08.1997	Group	speed sensor FA2-E
checked		connection according to EURO M12x1
standard		CADDy-File 42 622 mod
		drawing No

issue	amendment	date	name	origin	replace	rep by
a	FA2J-1E-70 mod	28.10.2004	B. Hahn			
d	FA2H-3E-70 mod	28.11.2002	Reck			
c	RO0998	06.05.1999	Reck			
b	Yara Schutzbereich Messz	07.02.1997	Reck			

NORIS		sheet 1
42 622		1 sh