



Les vibreurs VIBRA FRANCE sont construits en fonte nodulaire ou en aluminium grande résistance pour un fonctionnement en continu, avec en standard :

- ✓ Moteur tropicalisé
- ✓ Classe d'isolation F
- ✓ Protection mécanique : IP66-7
- ✓ Moteur imprégné par trempage de résine classe H (méthode ASTM)
- ✓ Arbre moteur en acier NiCrMo bonifié
- ✓ Roulements surdimensionnés, lubrifiés avec une graisse spéciale "LONG-LIFE" KLUBER STABURAGS NBU 8 EP
- ✓ Conformes aux normes européennes en vigueur.

**SERIE EA-X – Zones 2+22**  
 II 3G EEx nA II T3 et II 3D IP65 T100°C ou 120°C  
 Certification CESI 04 ATEX 133

**EA75.. : 8 Pôles – 750 Tours/mn à 50 Hz et 900 Tours/mn à 60 Hz**  
**EA10.. : 6 Pôles – 1 000 Tours/mn à 50 Hz et 1 200 Tours/mn à 60 Hz**  
**EA15.. : 4 Pôles – 1 500 Tours/mn à 50 Hz et 1 800 Tours/mn à 60 Hz**  
**EA30.. : 2 Pôles – 3 000 Tours/mn à 50 Hz et 3 600 Tours/mn à 60 Hz**

| Type     | CARACTERISTIQUES MECANIQUES |                 |        |                  |       |       |       | CARACTERISTIQUES ELECTRIQUES    |           |            |             |             |       |
|----------|-----------------------------|-----------------|--------|------------------|-------|-------|-------|---------------------------------|-----------|------------|-------------|-------------|-------|
|          | MASSELOTES                  | Moment Statique |        | Force Centrifuge |       | Poids |       | Puissance Abs. / Puissance Nom. |           | Cour. Nom. |             | Rapp. ID/IN |       |
|          |                             | (Kg/mm)         | 50 Hz  | 60 Hz            | 50 Hz | 60 Hz | 50 Hz | 60 Hz                           | 50 Hz     | 60 Hz      | 400 V 50 Hz | 460 V 60 Hz | 50 Hz |
| EA7501   | L                           | 82.10           | 82.10  | 52               | 74    | 10.80 | 10.80 | 105 / 62                        | 110 / 60  | 0.26       | 0.26        | 1.58        | 1.54  |
| EA7502   | DL                          | 160.60          | 160.60 | 101              | 145   | 22.80 | 22.80 | 210 / 135                       | 230 / 130 | 0.54       | 0.52        | 2.07        | 2.33  |
| EA7503   | DL                          | 199.00          | 199.00 | 125              | 180   | 24.30 | 24.30 | 210 / 120                       | 230 / 135 | 0.54       | 0.52        | 2.07        | 2.33  |
| EA7504   | DL                          | 282.00          | 282.00 | 177              | 255   | 34.50 | 34.50 | 240 / 160                       | 300 / 190 | 0.62       | 0.65        | 2.32        | 2.29  |
| EA7505   | DL                          | 437.00          | 437.00 | 275              | 396   | 40.50 | 40.50 | 300 / 200                       | 360 / 240 | 0.69       | 0.68        | 2.22        | 2.34  |
| EA1000   | L                           | 31.00           | 31.00  | 35               | 50    | 6.06  | 6.06  | 90 / 25                         | 90 / 45   | 0.19       | 0.19        | 1.38        | 1.26  |
| EA1001   | L                           | 82.10           | 82.10  | 92               | 132   | 10.80 | 10.80 | 140 / 90                        | 160 / 90  | 0.38       | 0.37        | 1.80        | 1.90  |
| EA1002-X | DL                          | 160.60          | 160.60 | 180              | 259   | 22.80 | 22.80 | 240 / 150                       | 280 / 170 | 0.53       | 0.54        | 3.30        | 3.48  |
| EA1003-X | DL                          | 199.00          | 199.00 | 222              | 320   | 24.30 | 24.30 | 260 / 150                       | 300 / 170 | 0.55       | 0.56        | 3.19        | 3.36  |
| EA1004-X | DL                          | 282.00          | 282.00 | 315              | 454   | 33.50 | 33.50 | 320 / 200                       | 350 / 230 | 0.70       | 0.68        | 2.83        | 3.06  |
| EA1006-X | DL                          | 437.00          | 355.00 | 489              | 572   | 40.50 | 37.90 | 450 / 260                       | 520 / 290 | 0.95       | 0.95        | 2.79        | 2.93  |
| EA1450-X | L                           | 9.60            | 7.20   | 24               | 26    | 3.75  | 3.70  | 75 / 45                         | 80 / 50   | 0.15       | 0.15        | 1.80        | 1.87  |
| EA1500-X | L                           | 12.40           | 9.30   | 31               | 34    | 5.00  | 4.85  | 100 / 40                        | 110 / 45  | 0.25       | 0.24        | 1.67        | 1.83  |
| EA1501-X | L                           | 21.70           | 15.50  | 55               | 56    | 5.49  | 5.15  | 100 / 40                        | 110 / 45  | 0.25       | 0.24        | 1.67        | 1.83  |
| EA1502-X | L                           | 31.00           | 21.70  | 78               | 79    | 5.90  | 5.60  | 100 / 40                        | 110 / 45  | 0.25       | 0.24        | 1.67        | 1.83  |
| EA1503-X | L                           | 82.10           | 56.40  | 207              | 204   | 11.00 | 9.90  | 180 / 100                       | 190 / 110 | 0.45       | 0.42        | 2.62        | 3.00  |
| EA1504-X | DL                          | 160.60          | 114.00 | 404              | 413   | 22.90 | 21.60 | 310 / 180                       | 370 / 200 | 0.66       | 0.66        | 3.73        | 3.88  |
| EA1505-X | DL                          | 199.00          | 160.60 | 500              | 582   | 24.60 | 23.30 | 340 / 180                       | 400 / 200 | 0.71       | 0.71        | 3.46        | 3.61  |
| EA1508-X | DL                          | 282.00          | 191.00 | 709              | 692   | 33.50 | 31.70 | 475 / 260                       | 525 / 300 | 0.92       | 0.90        | 4.61        | 5.00  |
| EA1510-X | DL                          | 437.00          | 282.00 | 1099             | 1021  | 41.00 | 35.80 | 600 / 430                       | 680 / 500 | 1.16       | 1.14        | 4.22        | 4.55  |
| EA2950-X | L                           | 6.57            | 5.26   | 52               | 62    | 3.50  | 3.40  | 100 / 50                        | 130 / 55  | 0.18       | 0.22        | 2.33        | 2.14  |
| EA3000-X | L                           | 6.57            | 5.26   | 66               | 76    | 4.80  | 4.65  | 150 / 55                        | 165 / 60  | 0.30       | 0.28        | 2.90        | 3.54  |
| EA3001-X | L                           | 12.40           | 9.30   | 125              | 135   | 5.00  | 4.80  | 180 / 80                        | 190 / 90  | 0.35       | 0.32        | 2.49        | 3.09  |
| EA3002-X | L                           | 18.60           | 12.40  | 187              | 180   | 5.30  | 4.95  | 180 / 80                        | 190 / 90  | 0.35       | 0.32        | 2.49        | 3.09  |
| EA3003-X | L                           | 30.80           | 20.50  | 310              | 297   | 8.60  | 8.20  | 270 / 160                       | 300 / 180 | 0.58       | 0.60        | 3.97        | 4.08  |
| EA3006*  | L                           | 66.40           | 47.40  | 668              | 687   | 19.00 | 18.50 | 500 / 380                       | 600 / 420 | 0.98       | 0.85        | 5.01        | 6.12  |
| EA3008-X | L                           | 85.40           | 56.90  | 859              | 825   | 28.00 | 27.60 | 600 / 350                       | 700 / 360 | 1.00       | 1.00        | 4.37        | 4.64  |
| EA3010-X | L                           | 104.40          | 75.90  | 1050             | 1100  | 30.00 | 29.20 | 720 / 450                       | 800 / 500 | 1.20       | 1.16        | 4.52        | 5.00  |

L : Masselotte à Lamelles - DL : Masselotte demi-Lune

\* EA3006-X norme ATEX : Sur demande

Sur demande :

- Classe d'isolation H - Couvercles des masses en inox - Entraxes spéciaux - Tensions spéciales - Adjonction de résistance de Chauffage
- 10 Pôles 600 Tours en 50 Hz et 720 Tours en 60 Hz ou 12 Pôles 500 Tours en 50 Hz et 600 Tours en 60 Hz

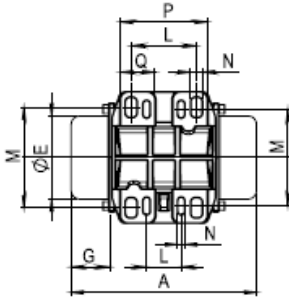


Fig. 1

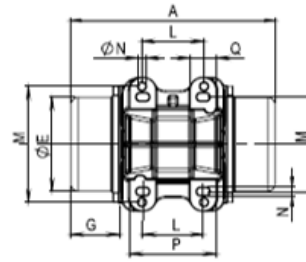
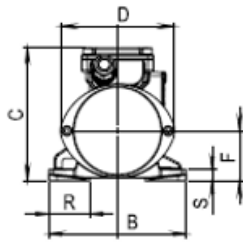


Fig. 2

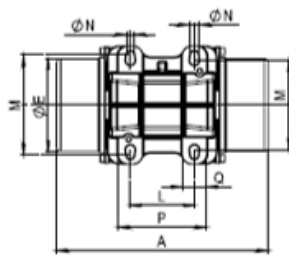
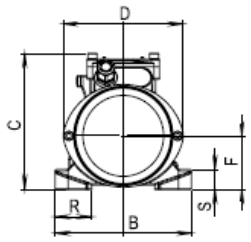


Fig. 3

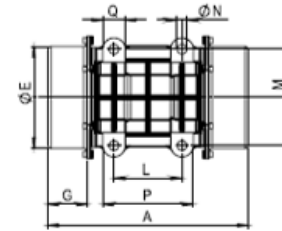
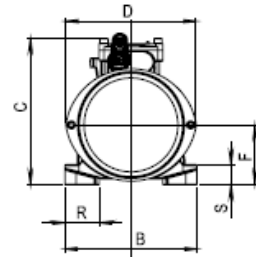
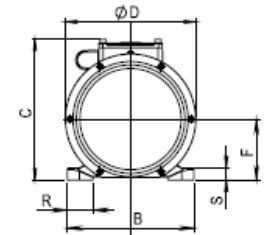
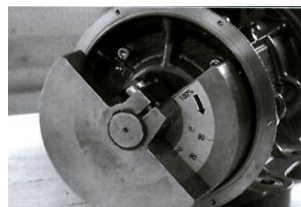


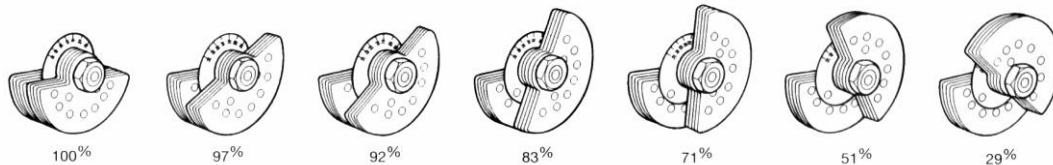
Fig. 4



| Type   | DIMENSIONS ENCOMBREMENT<br>(mm) |     |     |     |     |     |     |    | DIMENSIONS FIXATION<br>(mm) |           |                    |     |    |      |    |
|--|---------------------------------|-----|-----|-----|-----|-----|-----|----|-----------------------------|-----------|--------------------|-----|----|------|----|
|  | Fig                             | A   | B   | C   | D   | øE  | F   | G  | L                           | M         | øN                 | P   | Q  | R    | S  |
| EA1450   | 1                               | 195 | 125 | 120 | 104 | 79  | 45  | 46 | 62 à 65                     | 85 à 106  | 4 x M8             | 83  | 33 | 32.5 | 10 |
| EA2950-X   |                                 | 37  |     |     |     |     |     | 33 |                             |           |                    |     |    |      |    |
| EA1500-X EA1501-X<br>EA3000-X - EA3001-X EA3002-X<br>EA1000 - EA1502-X | 2                               | 212 | 150 | 150 | 132 | 105 | 59  | 46 | 62 à 74                     | 106       | 4 x M8             | 98  | 30 | 35   | 22 |
|  | 230                             | 55  |     |     |     |     |     | 70 |                             |           |                    |     |    |      |    |
| EA7501 - EA1001 - EA1503-X   | 3                               | 298 | 166 | 184 | 162 | 130 | 75  | 69 | 90                          | 125 à 140 | 4 x M12<br>4 x M10 | 125 | 35 | 38   | 25 |
| EA3003-X   |                                 | 50  |     |     |     |     |     |    |                             |           |                    |     |    |      |    |
| EA3006   | 4                               | 288 | 190 | 205 | 187 | 151 | 85  | 54 | 100                         | 160       | 4 x M12            | 136 | 33 | 40   | 16 |
| EA7502 - EA7503<br>EA1002-X - EA1003-X<br>EA1504-X - EA1505-X          |                                 | 85  |     |     |     |     |     | 85 |                             |           |                    |     |    |      |    |
| EA7504 - EA1004-X - EA1508-X<br>EA3008-X - EA3010-X                    |                                 | 71  |     |     |     |     |     | 71 |                             |           |                    |     |    |      |    |
| EA7505 - EA1006-X - EA1510-X   | 4                               | 355 | 210 | 236 | 216 | 181 | 101 | 71 | 120                         | 170       | 4 x M16            | 160 | 40 | 43   | 20 |
|  | 101                             | 101 |     |     |     |     |     |    |                             |           |                    |     |    |      |    |



Réglage demi-Lune



Réglage à Lamelles