

GPD-FM

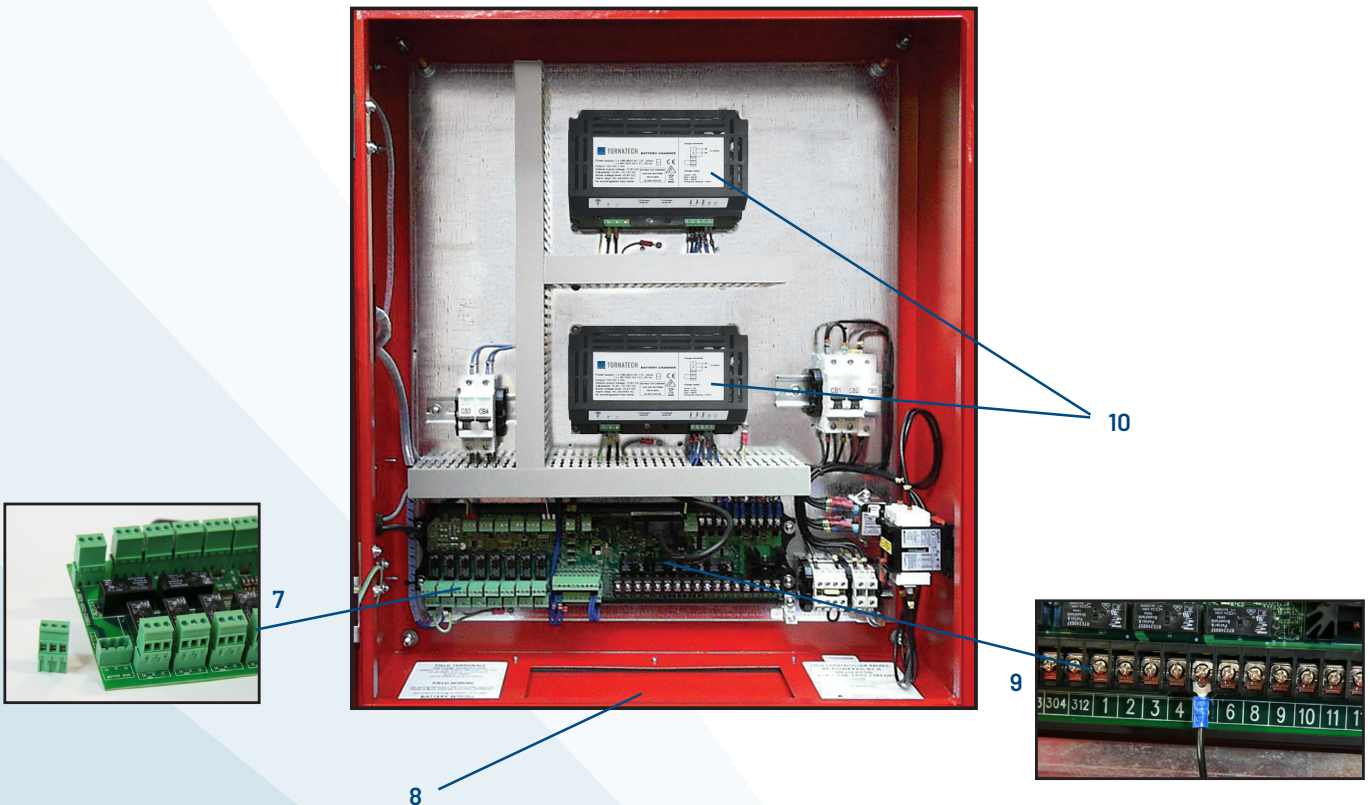
Diesel Engine Fire Pump Controllers

Standard Features

- ViZiTouch operator interface
- Enclosure:
 - 700 x 600 x 228 (mm)
 - IP55
- Pressure and event recorder
- Battery voltage and amperage display
- Run Test push button
- HAND - OFF - AUTO selector switch
- Manual crank pushbuttons (2)
- Stop pushbutton
- Remote start / deluge valve start provision
- Pressure transducer and run test solenoid valve externally mounted
- Gland plate
- Audible alarm
- Alarm contacts for remote indication
- Weekly exercise programmable time clock
- Crank cycle
- Programmable automatic shutdown (minimum run timer)
- Programmable sequential start timer (delay start timer)



- 1. Alarm bell
- 2. Externally mounted pressure transducer and run test solenoid valve with protective cover
- 3. Key lock
- 4. ViZiTouch V2 operator interface
- 5. Exterior USB port (interior USB port also supplied)
- 6. HAND-OFF-AUTO selector switch
- 7. Remote alarm contacts with removable terminals
- 8. Gland plate
- 9. Automotive type engine connections
- 10. Battery chargers

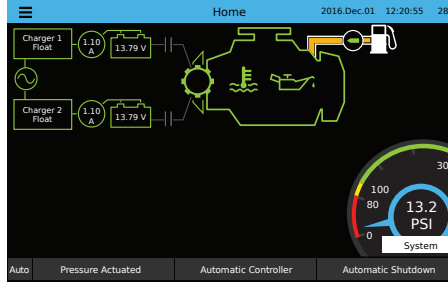




ViZiTouch V2 Operator Interface



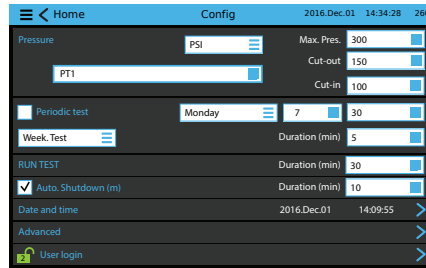
HOME SCREEN



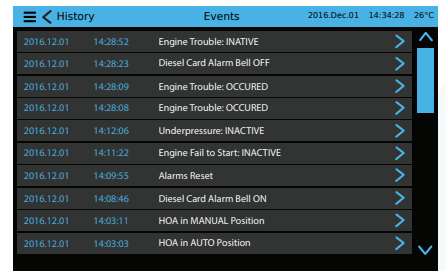
ON-SCREEN MENU

- Home
- Alarm
- Configuration
- History
- Service
- Manual
- Languages

SETTINGS



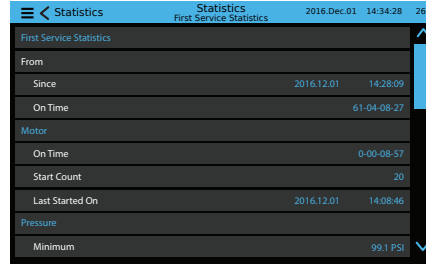
EVENTS



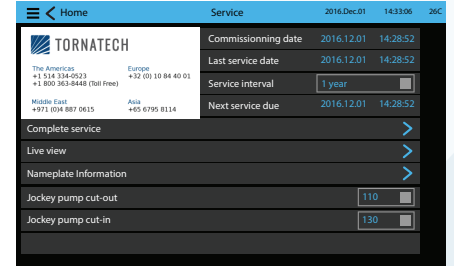
VIZITOUCH V2 MAJOR FEATURES INCLUDE:

- Touch screen operation with 7" color display and intuitive graphics
- Multi-language
- Upgradable software
- Password protected

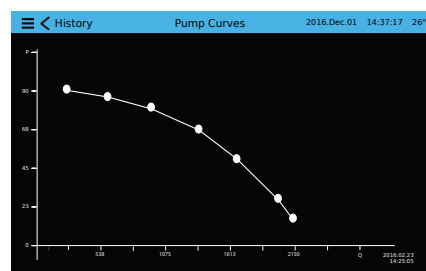
HISTORY/STATISTICS



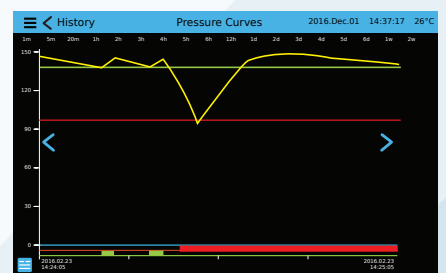
SERVICE



PUMP CURVES



PRESSURE CURVES



MODEL GPD - FM

WEIGHTS & DIMENSIONS

	WALL MOUNT		FLOOR MOUNT	
STARTING VOLTAGE	Approx. Dimensions in mm	Approx. Weight in kg	Approx. Dimensions in mm	Approx. Weight in kg
12V.DC	700 w x 600 h x 228 d	32	1208 w x 600 h x 228 d	43
24V.DC				

HOW TO ORDER: GPD-FM / 12 OR 24 VDC / 120VAC OR 208 to 240VAC / Options

Ex.: GPD-FM / 12 / 220 / B1, C7