



E3022-15

RRES 90061

AMS 2647

EN ISO 3059

CEN/TR 16638



# NDT

## FLUORESCENT INSPECTION PRODUCTS



- ▶ **NEW** IP RATED LAMPS
- ▶ LED UV-A LAMPS
- ▶ AEROSPACE COMPLIANT LAMPS
- ▶ LED BLUE LIGHT LAMPS
- ▶ OVERHEAD FLOOD LAMPS
- ▶ DIGITAL RADIOMETERS

# uVision™ 365 SERIES

Compliant, IP Rated, Fanless LED UV-A Lamps

The uVision™ 365 SERIES is Spectrolines innovative new line of compact, broad-beam NDT handheld lamps. These lightweight yet rugged lamps boast an IP65 rating – they are dust-tight and water resistant. Using a state-of-the-art heat sink design, the uVision™ is mechanically cooled without the need for a fan. In addition to three powerful UV-A (365 nm) LEDs, it has a convenient white light LED for illuminating work areas. Compliant versions have embedded microprocessors to keep lamps within specifications.

		UV-365SBLC*	UV-365MSBLC*	UV-365HC	UV-365MHC	UV-365ES*	UV-365EH	UV-365MEH
TESTED TO COMPLY WITH	<b>Rolls-Royce RRES 90061 REQUIREMENTS</b>	✓	✓	✗	✗	✗	✗	✗
TESTED TO COMPLY WITH	<b>ASTM E3022-15 STANDARD</b>	✓	✓	✓	✓	✗	✗	✗
MEETS SPECIFICATIONS	<b>EN ISO 3059</b>	✓	✓	✓	✓	✓	✓	✓
<b>Nominal Steady-State UV-A Intensity at 15 in (38 cm) ①</b>	< 5,000 µW/cm²		6,000 µW/cm²		< 5,000 µW/cm²		7,000 µW/cm²	
<b>UV-A Coverage Area at 15 in (38 cm) at minimum 1,200 µW/cm²</b>	6 in (15 cm) Diameter		6.4 in (16 cm) Diameter		6 in (15 cm) Diameter		7 in (18 cm) Diameter	
<b>Filter/Faceplate</b>	Faceplate with integral UV-A pass filters					Standard faceplate		
<b>Thermal Cut-Off Circuitry</b>	✓			✗				
<b>AC/DC Mobile Model</b>	✗	✓	✗	✓	✗	✗	✓	✓
<b>Visible Light Measurement</b>	< 1 foot-candles (11 lux)					< 2 foot-candles (22 lux)		

\*These versions are adjusted to ensure that they provide a maximum steady-state UV-A intensity of less than 5,000 µW/cm² at 15 in (38 cm)

① UV-A intensity reading taken with the Spectrolines® AccuMAX™ Series meter, and is factory set to the value shown.

Each lamp is fitted with an 8-foot cord and the appropriate plug for the country of destination. An optional 20-foot cord is available. The "/20" suffix denotes the 20-foot power cord options.



## Technical Features

<b>Light Source:</b>	(3) UV-A LEDs, (1) white light LED	<b>White Light LED Intensity:</b>	400 foot-candles (4,306 lux)
<b>Lamp Style:</b>	Pistol grip	<b>Power Requirements:</b>	100-120VAC / 12VDC*
<b>Lamp Head Diameter:</b>	3.5 in (9 cm)	<b>Battery Pack:</b>	Type: 12V, NiMH (rechargeable) Run time: 3.5 hours continuous Charge time: 2 hours
<b>Height:</b>	7.5 in (19 cm)		
<b>Width:</b>	3.5 in (8.9 cm)		
<b>Weight:</b>	1.9 lb (0.90 kg)		

\*(Also available in 230V & 240V versions)





**Compliant Versions\***

**IP65 RATED**



**Dust-Tight & Water Resistant**



**Fanless & Cool Running**



**Wide, Even Beam Profile**



**LONG-LASTING UV-A LENSES**  
Reduce the rate of solarization

**3 UV-A LEDS**  
For wide area of coverage

**Faceplate with INTEGRAL UV-A PASS FILTERS**  
Reduce visible wavelengths

**ADJUSTABLE WHITE LIGHT LED**  
Use to locate surface flaws



BACK VIEW

**SEALED CONTROL SWITCH**  
Grip-mounted, three-way rocker switch (white light/off/UV)

**POWER/BATTERY LIFE LIGHT**  
Indicates power level

**PISTOL GRIP**  
Comfortable, balanced control

**uVision™ 365 DELUXE Models\***

**THERMAL CUT-OFF CIRCUITRY**  
Prevents lamp from going out of compliance when internal temperature exceeds specifications  
*\*(SBLC model only)*

**FANLESS DESIGN**  
Maintains optimum lamp temperature using state-of-the-art heat sinks

**uVision™ 365 ECONOMY Models**

IP65 rated, compact, LED UV-A inspection lamps. Available in two different intensities. These cost-effective inspection lamps can be used in nondestructive evaluation, forensics, and security inspections.

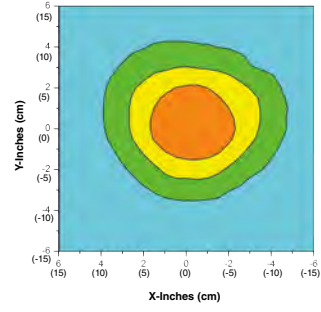
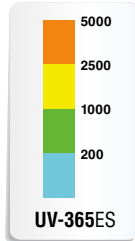
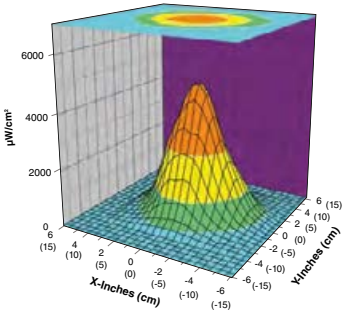
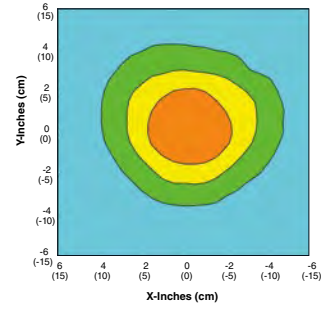
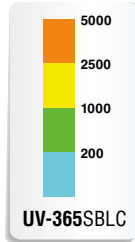
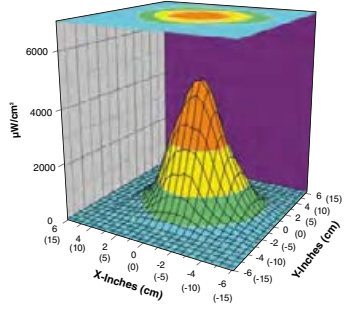
- ▶ **3 UV-A LEDS** for wide area of coverage
- ▶ **WHITE LIGHT LED** allows for scanning surface flaws (not adjustable)
- ▶ **LONG-LASTING UV-A LENSES** reduce the rate of solarization
- ▶ **SEALED CONTROL SWITCH** grip-mounted, three-way rocker switch (white light/off/UV)
- ▶ **PISTOL GRIP** comfortable, balanced control
- ▶ **FANLESS DESIGN** maintains optimum lamp temperature using state-of-the-art heat sinks



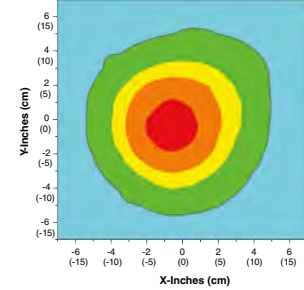
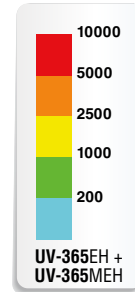
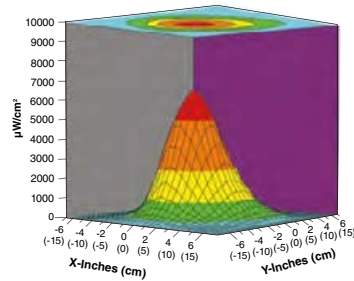
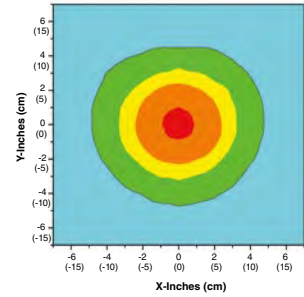
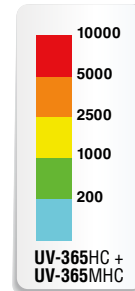
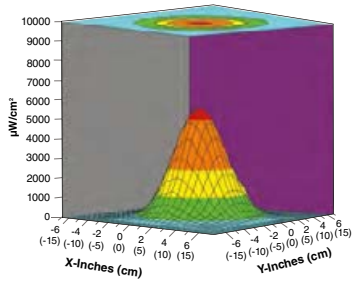
**SURFACE CONTOUR PROFILE**  
at 15 in (38 cm)

**TOP INTENSITY PROFILE**  
at 15 in (38 cm)

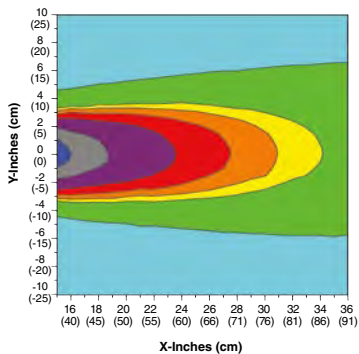
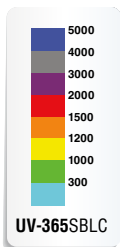
**STANDARD-INTENSITY**



**HIGH-INTENSITY**

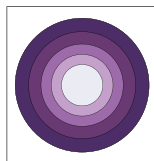


**LONGITUDINAL PROFILE** Alternative view of beam profile and useful irradiance zone

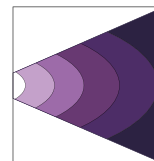


In addition to providing a traditional transverse projected beam showing intensity profile distribution upon a surface, we now measure and provide a longitudinal beam profile for some of our NDT LED UV-A lamps.

The Longitudinal Scan shows irradiance distribution as function of inspection distance.



**Transverse Scan:** shows intensity of beam pattern upon a surface



**Longitudinal Scan:** shows irradiance distribution as function of inspection distance



**UV-365SBLC**

**uVision™ 365 AC Deluxe Kit**

Lamp with in-line AC power supply, UV-absorbing spectacles, comes in a protective case.



**UV-365MSBLC**

**uVision™ 365 AC/DC Mobile Deluxe Kit**

Lamp with in-line AC power supply, UV-absorbing spectacles, battery pack with 12V rechargeable NiMH battery, comes in a protective case.



**UV-365MEH**

**uVision™ 365 AC/DC Mobile Kit**

Lamp with AC power supply, UV-absorbing spectacles, battery pack with 12V rechargeable NiMH battery, comes in a padded case.

Replacement Parts and Accessories

IMAGE	PART #	DESCRIPTION	IMAGE	PART #	DESCRIPTION
	127955	Standard faceplate		BP-30	Battery pack with 12V rechargeable NiMH battery
	128196	Faceplate with integral UV-A pass filters		BR-150A	Smart AC charger for battery pack
	130206	8 foot (2.4 m) AC power cord (100-120V/50-60Hz)		CC-370A	Padded carrying case
	130210	20 foot (6.1 m) AC power cord (100-120V/50-60Hz)		FA-100	Flexible arm
	130260	8 foot (2.4 m) AC power cord for DELUXE SERIES* (100-120V/50-60Hz)		FP-600	Borofloat® filter protector
	130264	20 foot (6.1 m) AC power cord for DELUXE SERIES* (100-120V/50-60 Hz)		UL-110	Long lasting UV-A lens
	130290	8 foot (2.4 m) AC power cord for MOBILE DELUXE SERIES* (100-120V/50-60Hz)		UVS-30	UV-absorbing spectacles
	130294	20 foot (6.1 m) AC power cord for MOBILE DELUXE SERIES* (100-120V/50-60Hz)		W-6	Wall mount with pin
	140005	Protective carrying case for DELUXE SERIES		WM-100	Wall mounting bracket
	B-6	Bench mount			

\* Available in 100-120V, 230V and 240V versions